



Functionality of eLiteMap application

for iOS devices
(iPhone, iPad, iPod touch)

(c) 2024 Data East, LLC

Table of contents

About the app

- [About the app](#)
- [Application terminology](#)

Section 1. Getting started and configuring the app

- [Application permissions](#)
- [Working with Maps catalog](#)
- [Map window](#)
- [Page for adding data and maps layers](#)
- [Application settings](#)

Section 2. Application data

- [Adding maps and data to the application folder](#)
- [Sharing data](#)

Section 3. Opening maps and creating projects

- [Opening map](#)
- [Working with protected maps](#)
- [Creating and opening project, editing project name](#)
- [Adding maps and data to project](#)
- [Automatic data conversion](#)
- [Adding online services](#)
- [Working with layers in project](#)
- [Changing layer settings](#)

Section 4. Creating and editing features

- [About GeoPackage](#)
- [Creating new feature](#)
- [Creating features by coordinates](#)

- Creating point feature by photo
- Recording track. Creating polygon by track
- Selecting symbol when creating feature in the existent layer
- Adding attachments to feature
- Filling in fields using QR code
- Editing features
- Adding and viewing Z coordinates (height) of point features

Section 5. Additional functionality

- Use as a destination point
- Searching for features. Going to feature by coordinates.
- Measuring on the map
- Circular ruler
- Creating marks
- Creating bookmarks
- Saving map extent
- Selecting map scale
- Finding current location
- Displaying information from GPS/GLONASS receiver in the map window

About the app

eLiteMap is a fully functional cartographic app provided for viewing and editing mobile maps on smartphones and tablets in offline mode.

System requirements:

iOS 15.0+

Supported data formats:

CMF2, MBTILES*, GPKG (GeoPackage), KML/KMZ, GPX, SHP

Supported types of online mapping services:

ArcGIS Service, Web Map Service (WMS)

*Maps in MBTILES format with raster tile type only are supported.

Application terminology

Mobile interactive map is a digital map of the area provided to view and work with it on mobile devices. The data transfer in mobile map is carried out in a two-way mode for the user. Such maps contain open information visible right after the map is open, and closed information which appears upon the user's actions only. The mobile application eLiteMap is provided for working with mobile interactive maps in CMF2 format. This format allows you to quickly draw a map on a mobile device, provides effective data compression (created maps are more compact) and has some other advantages.

Project is a set of maps and data layers with specified parameters. A project can consist of an unlimited number of maps or data layers.

Coordinate system of the map and project is a set of definitions that implements the coordinate method, that is, a way to determine position and movement of a point or a body using numbers or other symbols. Coordinate systems also known as cartographic projections are random designations of spatial features. There are two types of coordinate systems, the geographic and projected coordinate system. The coordinate system of the mobile map in CMF2 format is set during the map's creation, while the coordinate system of the project is determined based on the coordinate system of the project's lower layer.

Map scale is the proportion of the segment length on the map to its actual length on the area. Map scale at each point has its own particular value depending on the latitude and longitude of this point.

Map extent is a selected area on the map. Map extent captures spatial data at a particular scale.

Bookmark is a saved extent of the map. Bookmarks are useful while working with big spatial data, as you can quickly refer to the needed extent.

Spatial feature is a feature that stores its geographic representation as point, line or polygon as one of its properties (fields) in a line. A feature as an entity has coordinates, name, belonging to a data layer and can have description, media attachment.

Feature coordinates are a set of numbers that determine position of feature on a line, plane, surface or in space. eLiteMap allows you to work with the following coordinates representation formats:

- Degrees-minutes-seconds (DMS). Coordinates are displayed and set when searching and creating a feature in the form 00°00'00" N/S 00°00'00" E/W (latitude and longitude);
- Decimal degrees (DD). Coordinates are displayed and set when searching and creating a feature in the form X 00,00000 Y 00,00000 (latitude and longitude);
- UTM meters. Coordinates are displayed and set when searching and creating a feature in the form X 000000,00 Y 000000,00 (latitude and longitude).

Attachment is a multimedia file (photo, video, audio, document) added to any type of feature (point, line, polygon). Types of media attachment supported in the mobile app eLiteMap are jpeg, png, doc, pdf, txt, mp3, avi and etc.

Identification card is information about a feature that appears while selecting a feature on the map. An identification card contains attribute information about a feature and attachments as photo or media files, if any.

Track is a sequence of GPS coordinate points with timestamps. In the mobile app eLiteMap you can record GPS tracks and show the current route on the mobile map.

Application permissions

In order for the app to work correctly, the application requires access to use certain functions and data of your device. When each of the permissions is requested, a corresponding notification is issued. The content of requests and the ways to grant access to permissions may vary depending on the device model and OS version.

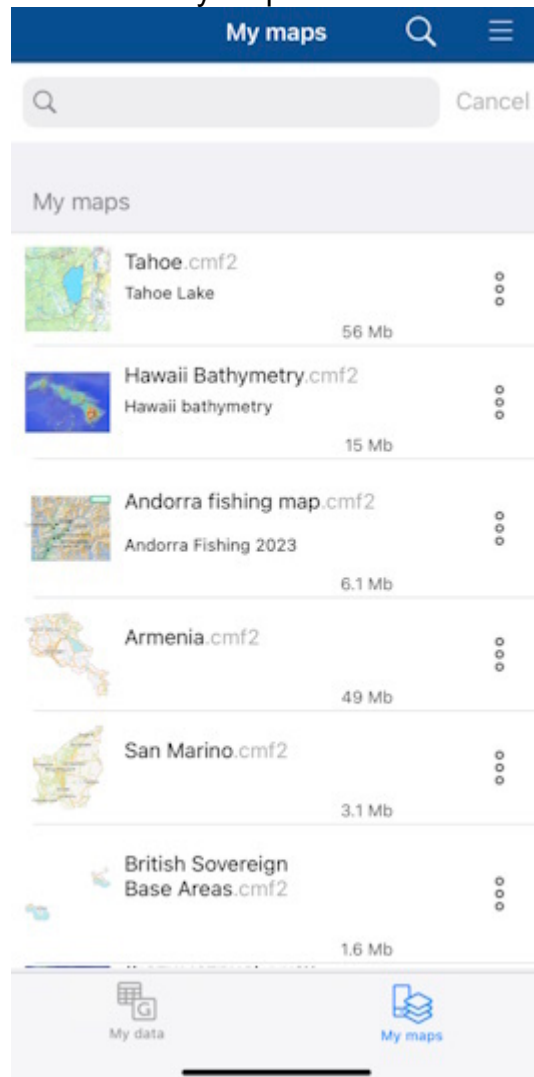
Recommended list of permissions:

- *Memory* – the application requires access to photos, multimedia and files on the device for correct operation. If there is no access to data, the application will not be able to read maps and data on the device, as well as work correctly when adding attachments to objects.
- *Location* – access to the approximate and exact location of the device is required for the correct operation of the application. We recommend giving the application access to the exact location of the device (by network coordinates and GPS satellites). For the track recording function to work correctly and create polygons by tracks, we also recommend that you grant the app access to your location in any mode (including in the background), otherwise the app will not be able to receive data about your location in the background, and the track line will be built incorrectly.
- *Camera* – for the application to work correctly when adding photos and video attachments to objects, the application needs access to the device's camera.
- *Microphone* – for correct work of the app when recording audio and video attachments, the application needs access to the microphone, otherwise audio recording will not be performed.

Working with Maps catalog

The start page of the eLiteMap application consists of two sections: the *My Maps* and *My Data*.

The **My Maps** tab displays all maps in the CMF2 and MBTILES formats downloaded and added by the user and stored on the device in the applications folder, as well as projects created from the application data (see [Creating and opening project, editing project name](#)). Access to the data in the My Maps section does not require an Internet connection.



The **My data** tab displays data in GeoPackage, KML/KMZ, GPX, SHP formats stored on the device in the application folder. Access to the data in the *My data* section does not require an Internet connection.

My data

Cancel

My data (eLiteMap_Demo.gpkg)

Lyr

POI_collection

Edited yesterday

Lyr

Lines_collection

Edited yesterday

Lyr

Polygons_collection

Edited yesterday

Lyr

eLiteMap_tracks

Edited yesterday

Lyr

eLiteMap_polygon_tracks

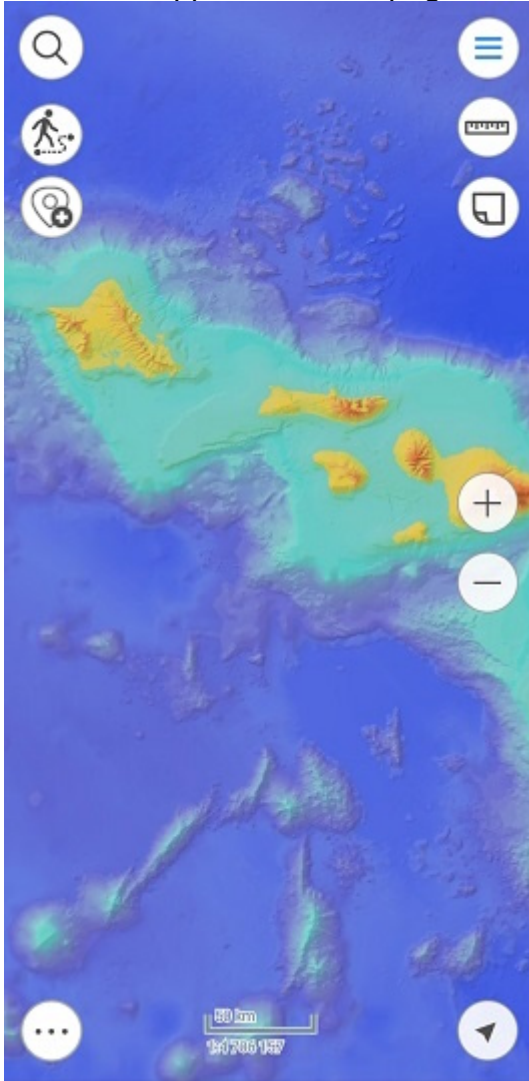
Edited yesterday

My data

My maps

Map window

When selecting a map or a project (see [Creating and opening project, editing project name](#)) in one of the application start page sections, you automatically get to the *Map window*.



In the map window, you can work with the map and project data – adding additional layers, creating new features, determining location, recording tracks, searching for features, measuring distances and areas, etc.

Overview of the map window buttons:



Main menu – provides options to make settings of the app without leaving the current project, to add layers and maps to project, to manage layers visibility and to perform operations with layers (zoom in/out, delete, view legend, view layer properties, etc.).



Search on map, go to coordinates – performs text and numeric search, goes to coordinates in DD and DMS formats.



Measure – measures on the map.



Create object – creates objects on the map (points, polylines, polygons).



Record track – records and saves GPS tracks.



Marks on map – creates graphic marks on the map.



My location – defines current location of the user.

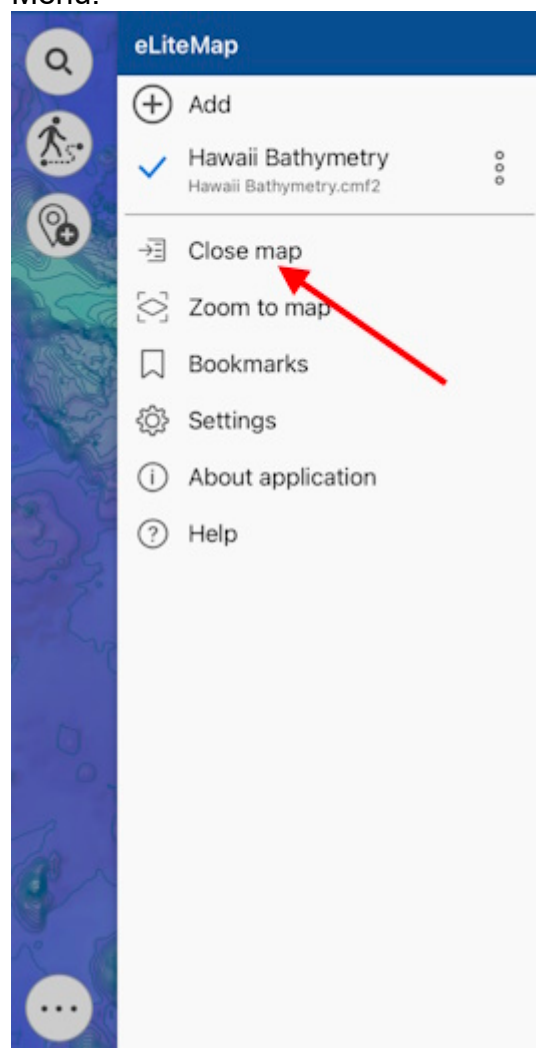


Additional tools for work with map – saving map extent as bookmark or PDF document.



Change map scale – zooms in/out the map.

To exit the map window and go to the Map Catalog window, click *Close map* button in the Main Menu.



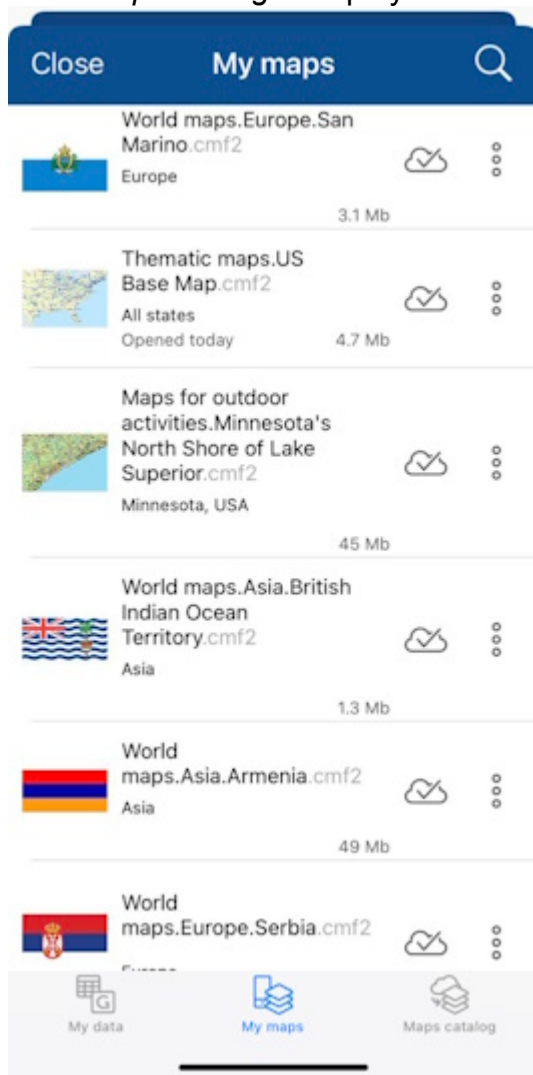
Page for adding data and maps layers

eLiteMap allows you to open maps in CMF2 or MBTILES formats and projects based on them directly from the start page sections of the application. Data from other supported formats and online mapping services can be added to an open map or project as additional layers.

All data that can be added to a map or project is presented on the Page for adding data and map layers. To go to the page, click  **Add** in the main menu of the Map window (see [Adding maps and data to project](#)).

The page for adding data and map layers consists of three sections:

- *My data* – displays data in GeoPackage, KML/KMZ, GPX, SHP formats stored on the device in the application folder;
- *My Maps* – displays all maps in CMF2 and MBTILES formats downloaded and added by the user and stored in the application folder on your device;
- *Map Catalog* – displays online mapping services.



Application settings

You can access the application Settings from the menu on the start page of the application or from the main menu in the map window.

In this window, you can change the general settings of the application and find out information about the device ID:

Device ID – viewing and copying information about the device ID, based on which the availability of cards limited by the device ID is determined (see [Opening map](#)).

Measurement units – changing the measurement system:

- Metric system (meters, kilometers):
 - Area units:
 - Square meters/kilometers,
 - Hectares;
- British system (feet, miles, acres).

Creating features – settings for features creation in the application:

- Hide or show the *Create polygon by track* button in the map window.

Map – changing the display of elements in the map window and working with map layers:

- Hide or show buttons to change the map scale.
- Hide or show the scale bar in the map.
- Hide or show the circular ruler in the map.
- Enable or disable screen lock while working with the application.
- Enable/disable cascade layer visibility toggling for CMF2 maps.
- Enable/disable the display of a buffer showing the accuracy of location on the map.
- Enable/disable the display of information from your device's GPS/GLONASS receiver at your current location on the map.

Cache – data caching settings in the application:

- Maximum cache size - select the required cache size from the list.
- Clear the cache.

Icons – change the appearance of the icon display on the map of the pushpin and location:

- Pushpin - open the list and select the desired icon.
- My Location - open the list and select the appropriate icon.

Coordinate systems – selection of the design coordinate system with indication of UTM zones (WGS-84, NAD-83).

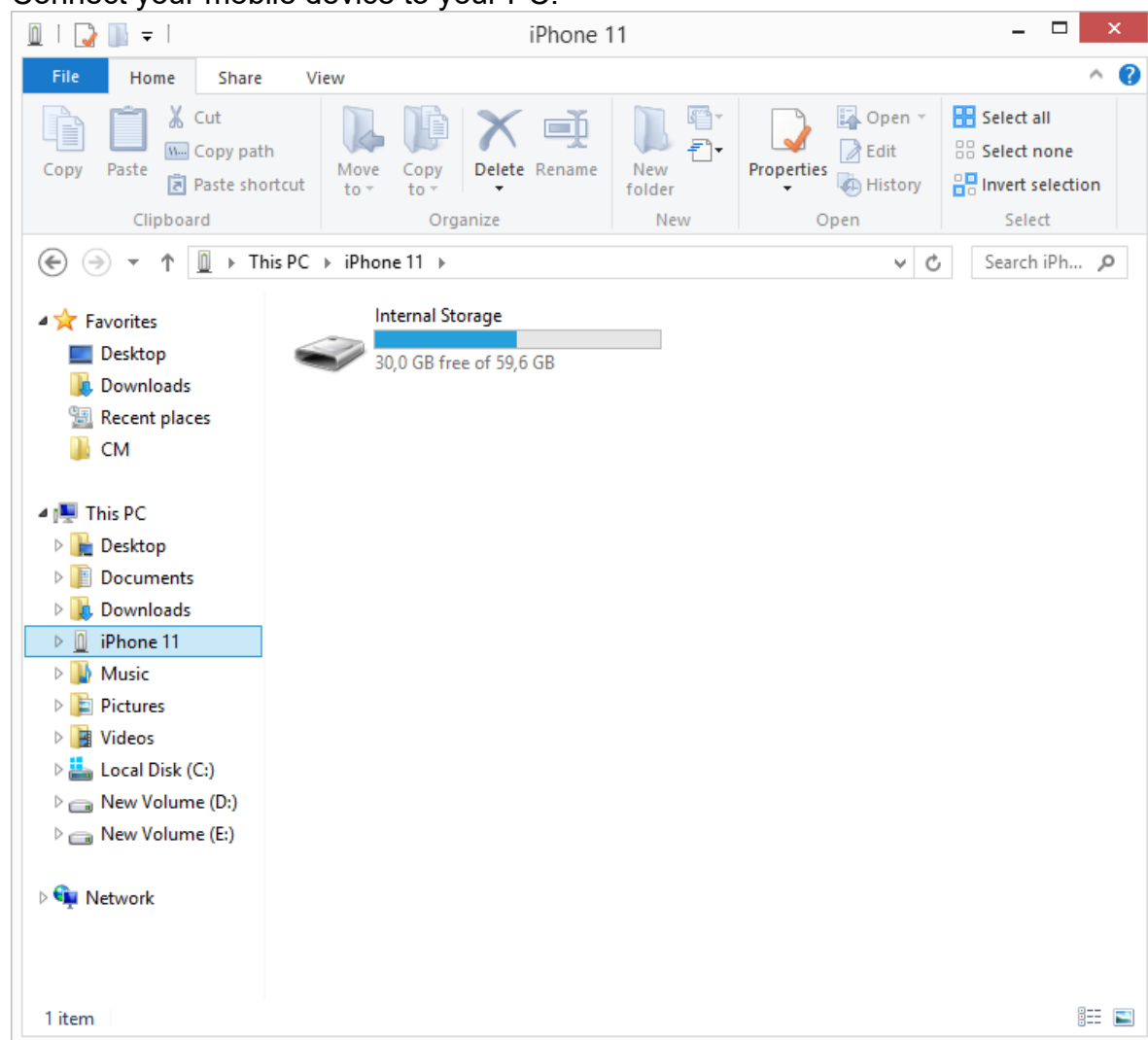
Adding maps and data to the application folder

The eLiteMap mobile application works directly with maps and data stored in the application folder.

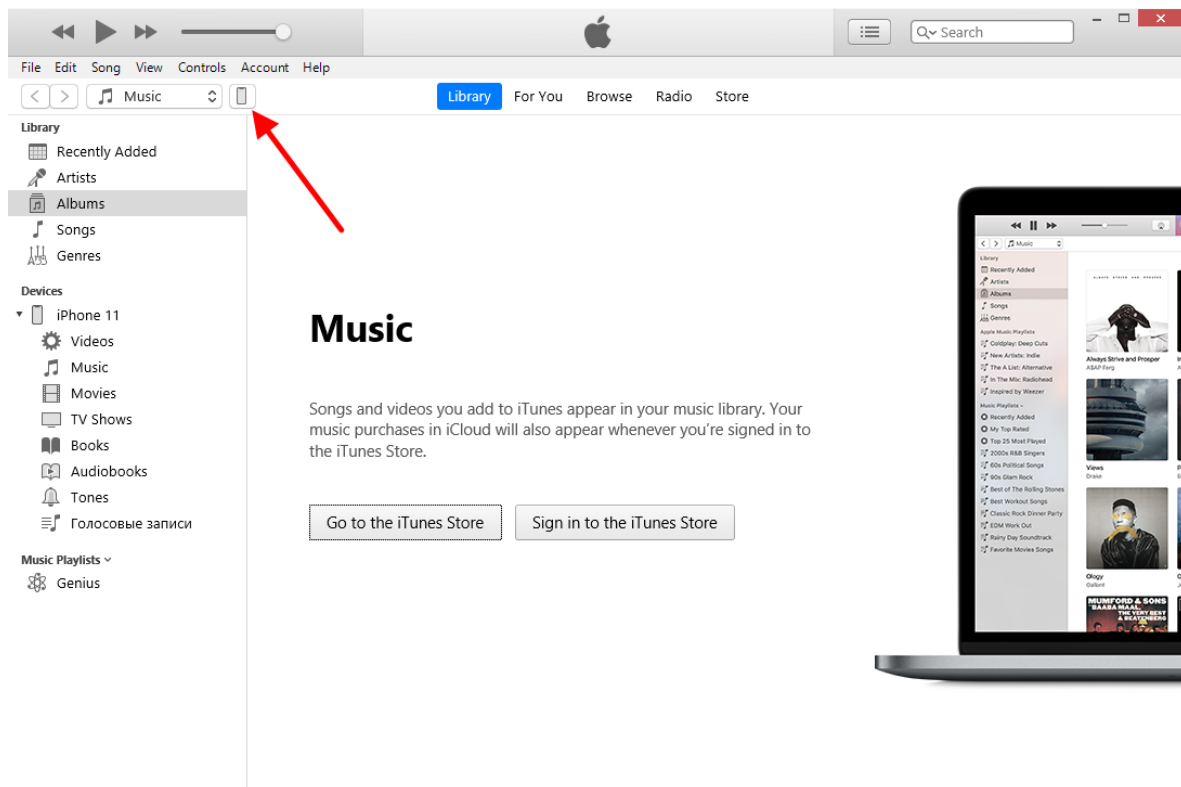
To add a CMF2 or MBTILES mobile map or data layers from GeoPackage, KML/KMZ, GPX, SHP files to the application folder, transfer it from PC to your mobile device using the iTunes, import data from cloud storage (OneDrive, Google Drive, Dropbox, etc.), send data via email clients or messengers.

Transferring information from a PC to your mobile device using iTunes

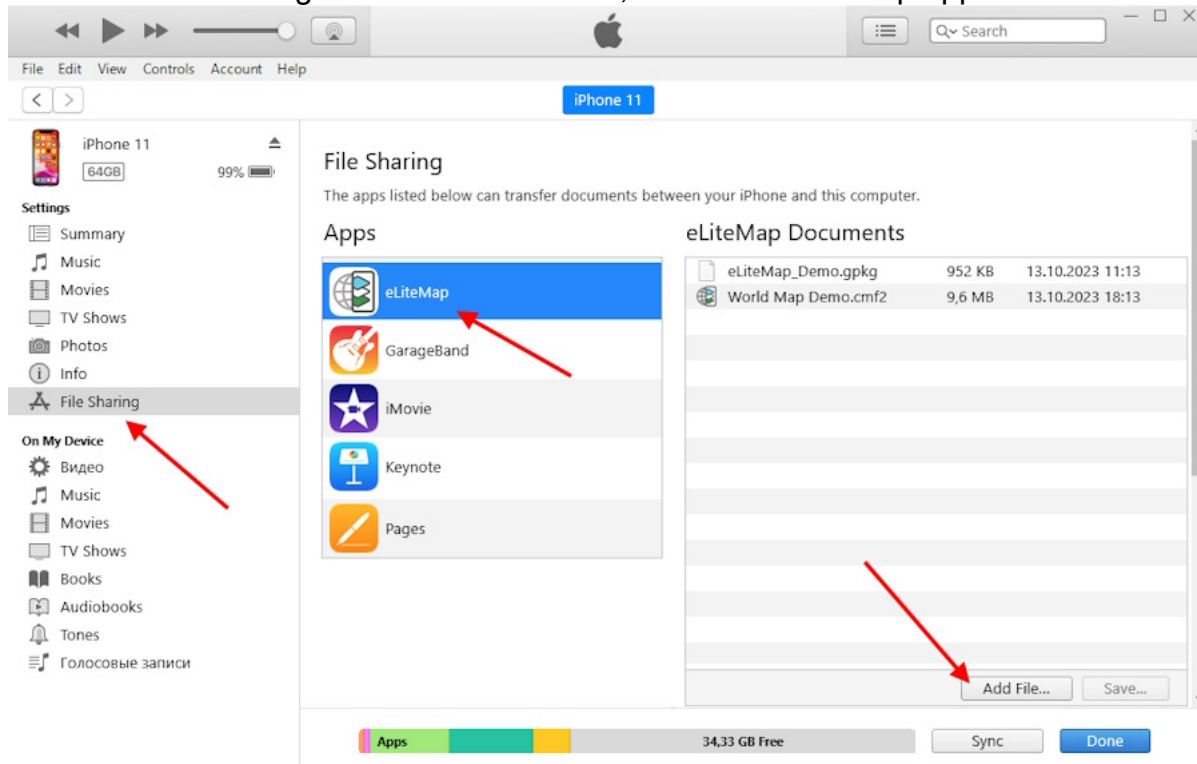
Connect your mobile device to your PC.



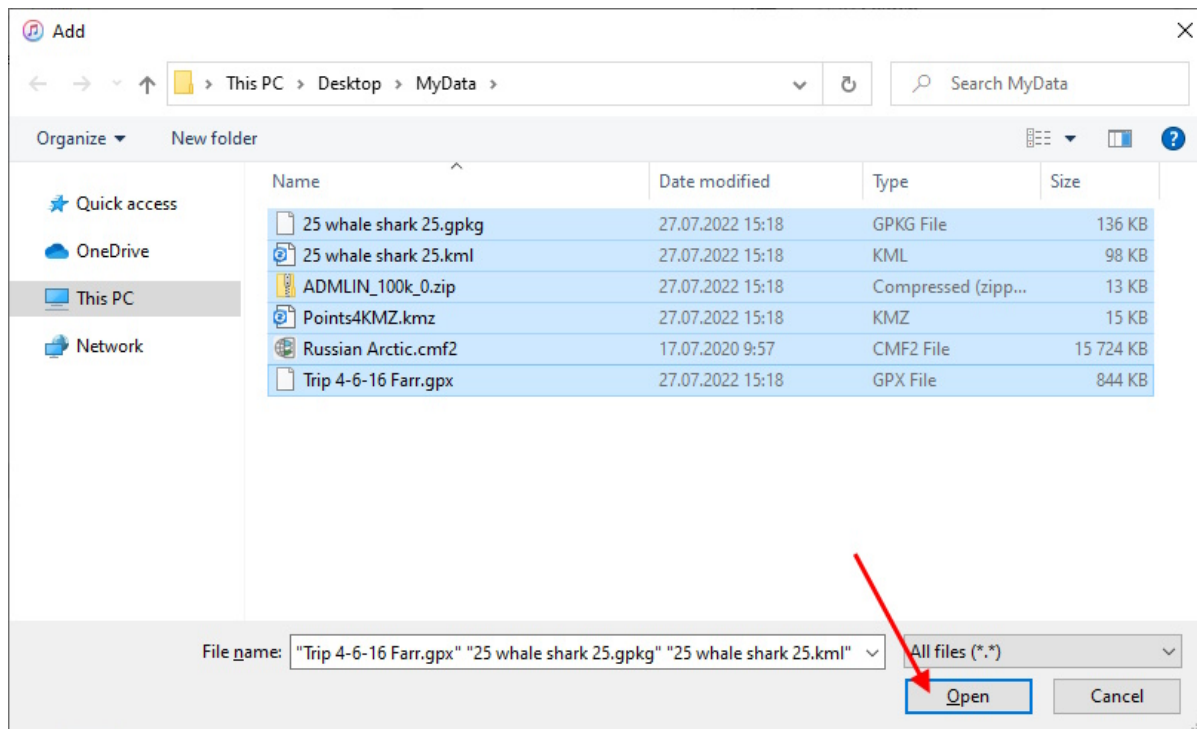
Launch the iTunes app. Click the device button in the upper-left part of the iTunes window.



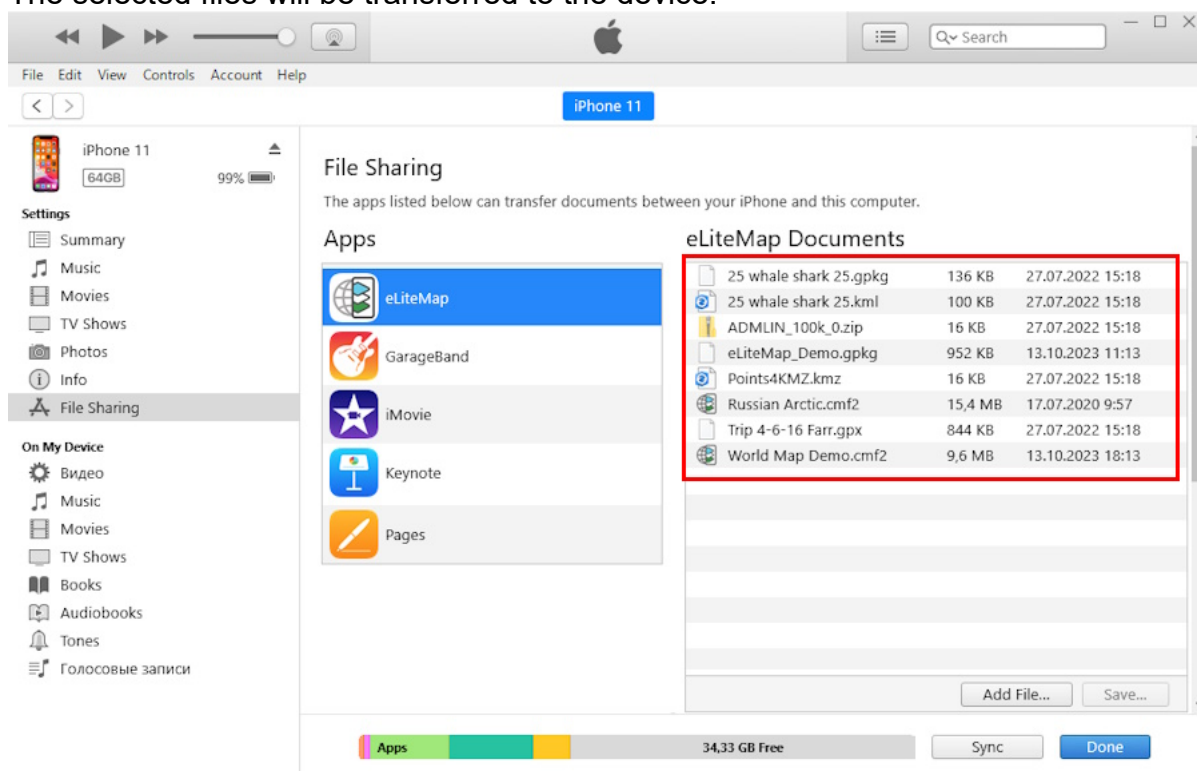
Click on "File Sharing". In the list on the left, select the eLiteMap application. Click "Add File".



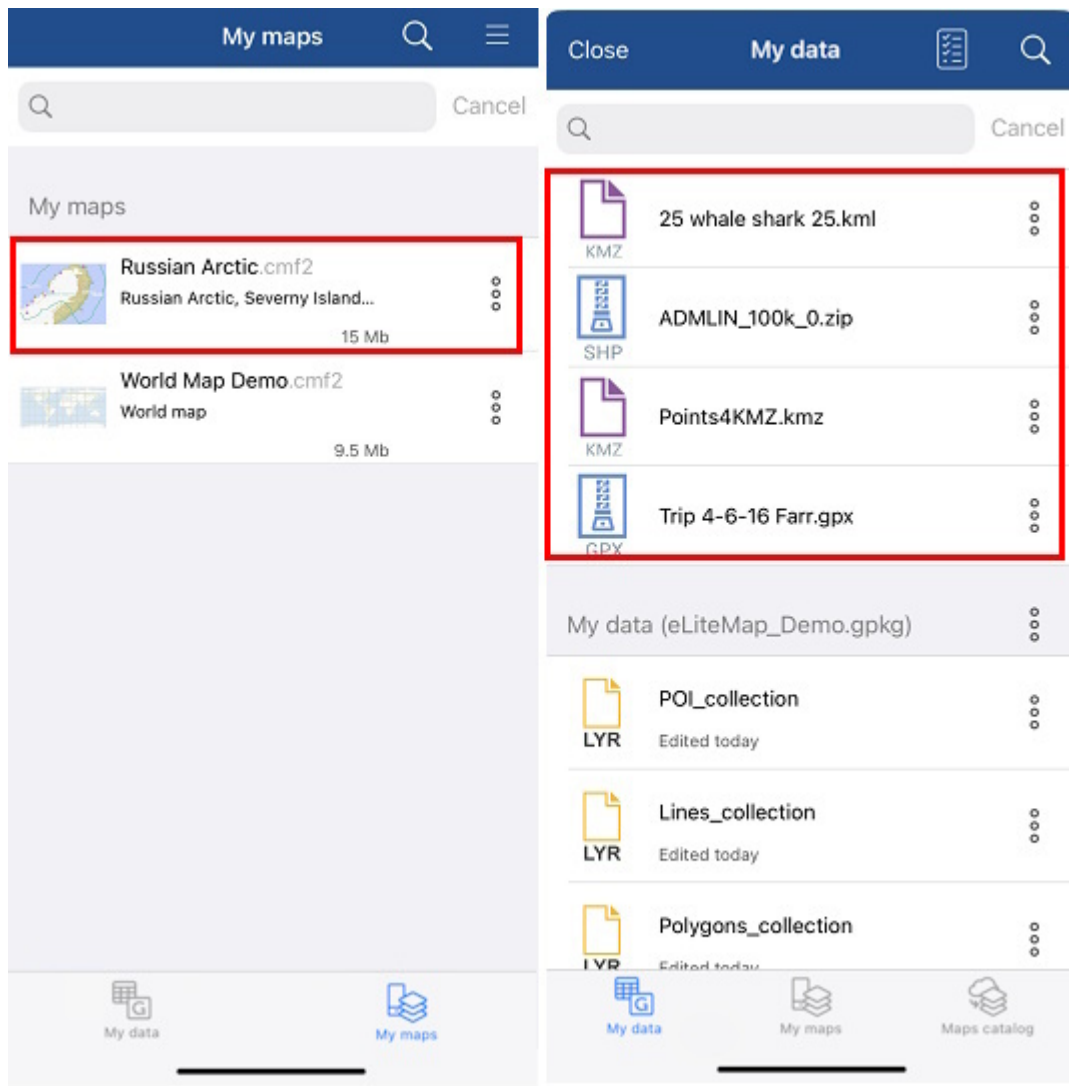
Select the files you want to transfer, then click Open.



The selected files will be transferred to the device.



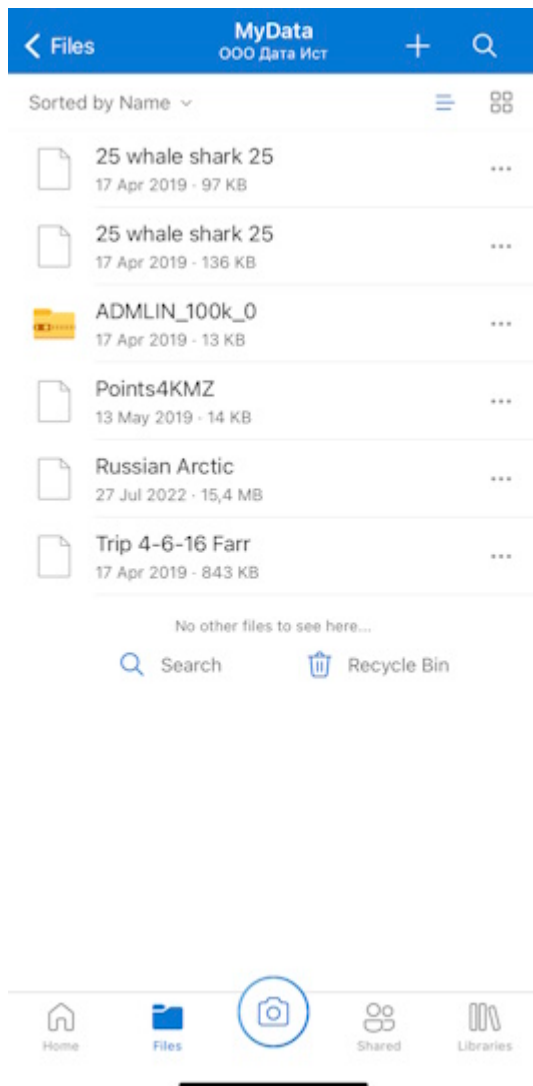
Open the eLiteMap app on your mobile device. The copied data will be displayed in the corresponding sections.



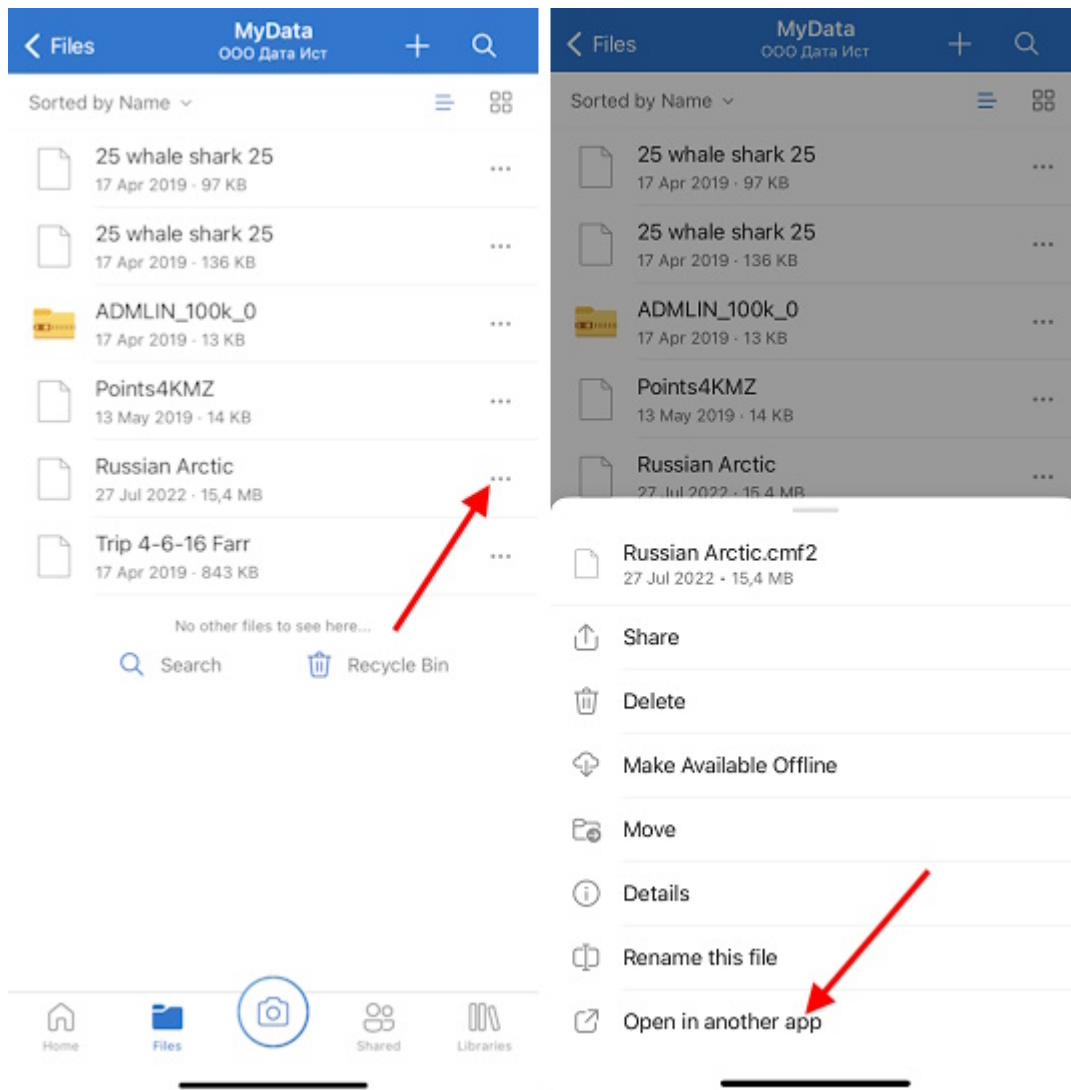
Importing data from cloud storage

Please note that importing data from cloud storage is only possible if you have access to the Internet.

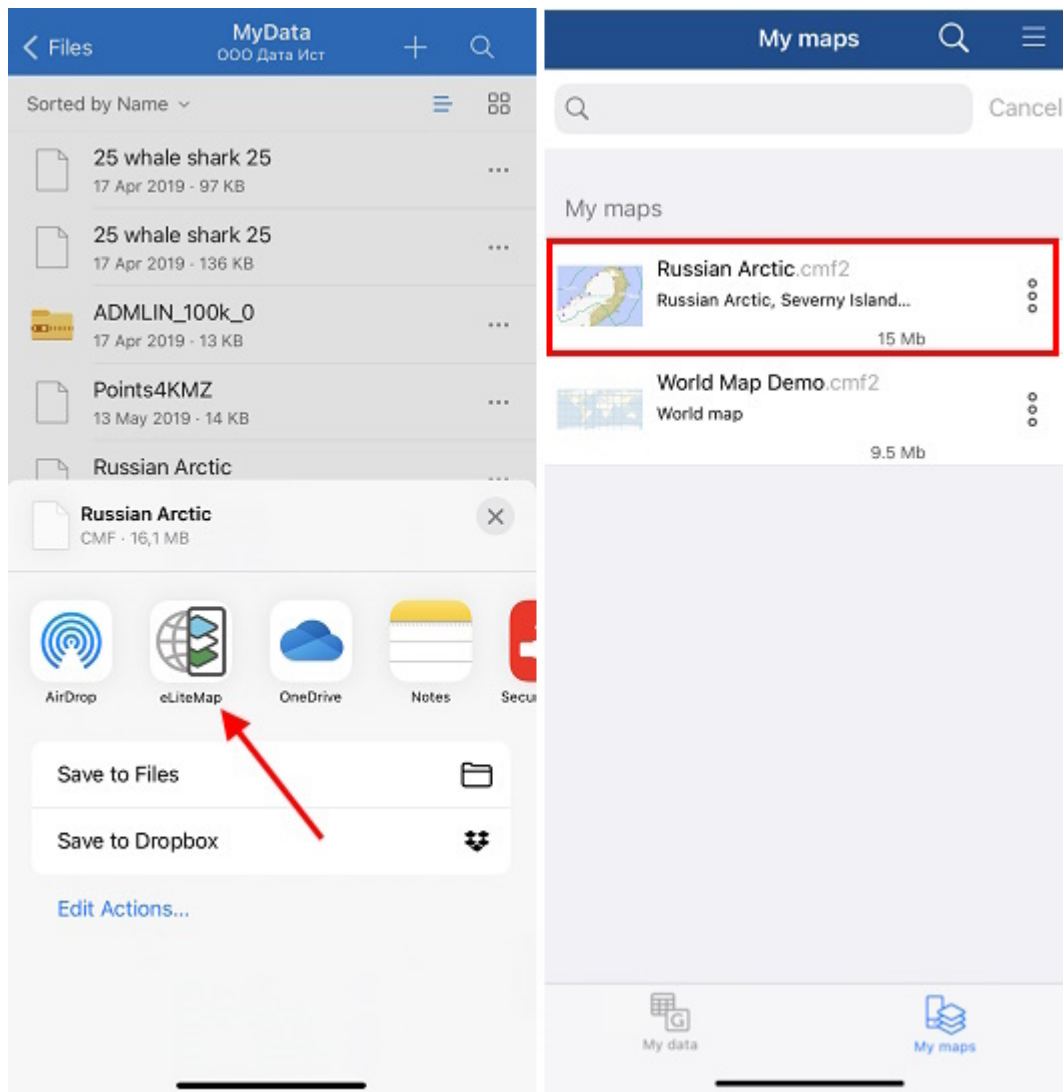
Open a cloud storage (for example, OneDrive) on your mobile device.



Select the file to add to the eLiteMap application. In the context menu, select "Open in another app".



In the list of programs to open, specify eLiteMap. The data will be added to the library of the eLiteMap application.



NOTE: The behavior in different cloud storages may differ from the one described above.

Sharing data

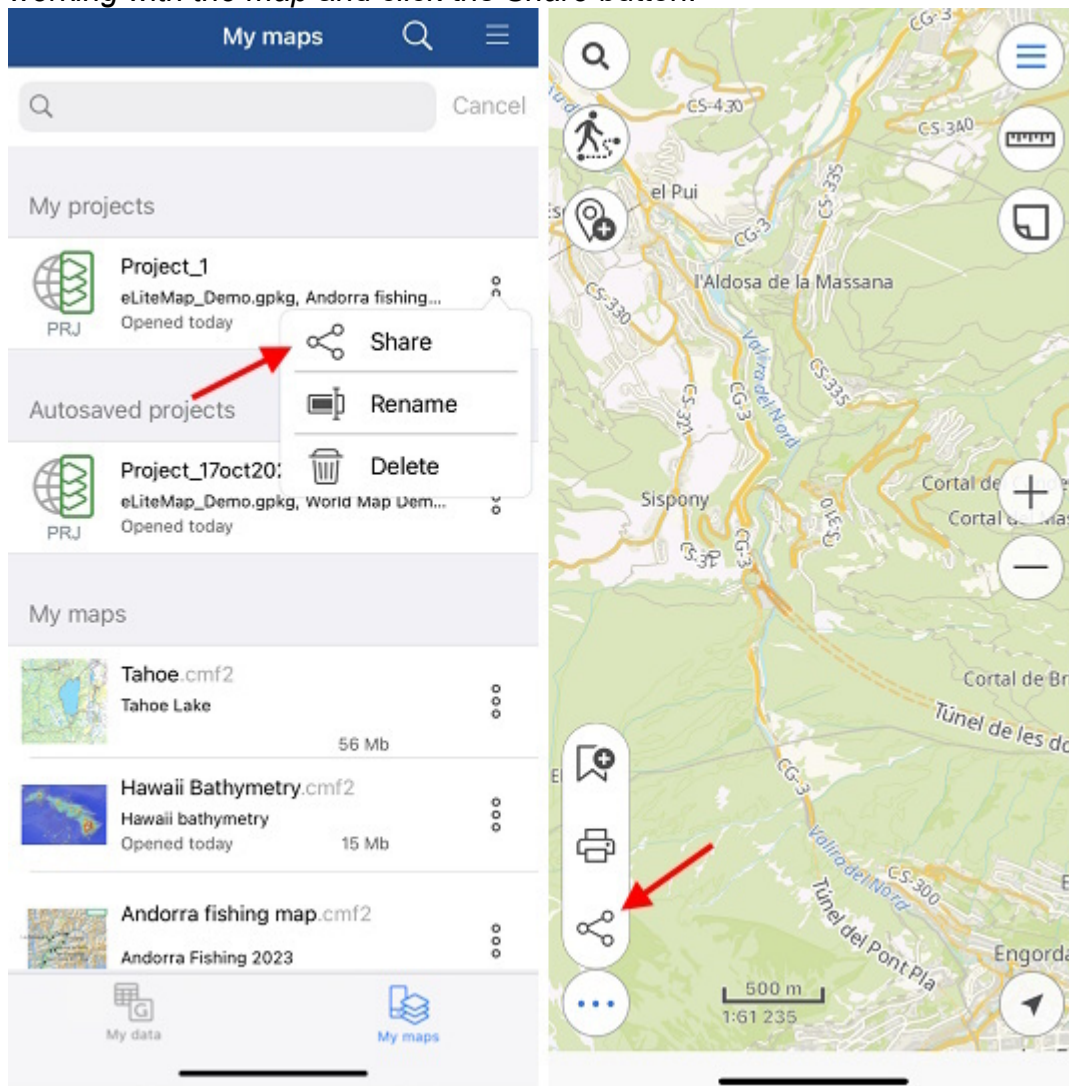
The eLiteMap application supports the ability to share all application data.

Take advantage of exchanging projects between the mobile and the desktop app versions. The format of the project's archive, CMPRJ, is common for all app platforms (Android, iOS, Windows).

In the mobile version of the app you can share a project both from the list of maps and projects at the "My maps" tab of the application start window and from the map window.

To share a project at the My Maps tab, open the project menu by tapping three dots and select *Share*.

The project can also be shared from the map window. To do this, go to the *Additional tools for working with the map* and click the *Share* button.



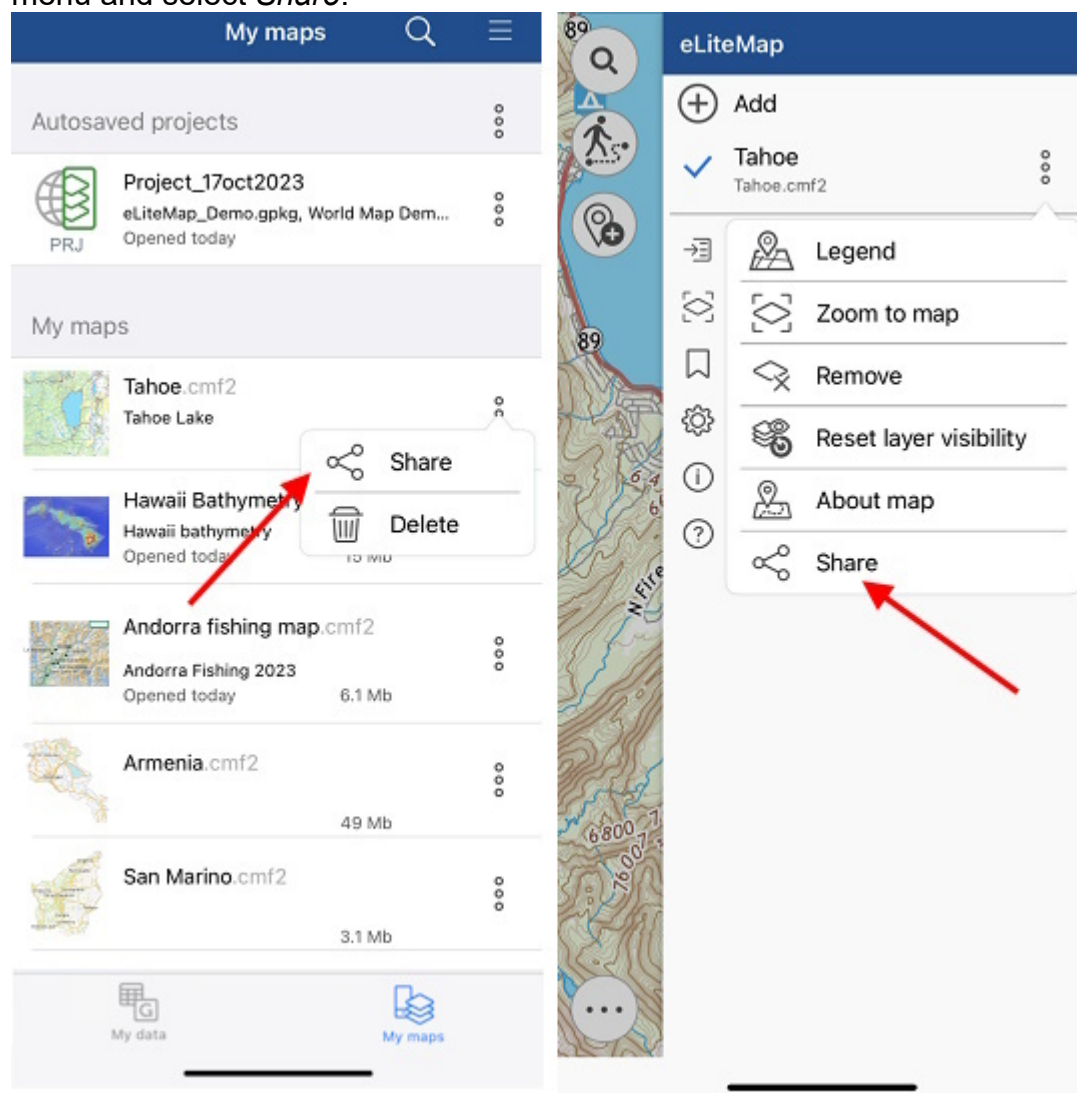
Then select the desirable method to use to share the project archive file.

You can also send your maps, layers and datasets, as well as links to online mapping services from the catalog of maps and data and from the list of project layers.

To share a CMF2 file open the maps menu on the *My Maps* tab on the start page or the Page for adding data and maps layers by tapping three dots and select *Share*.

The CMF2 map can also be shared from the list of project layers. To do this, open the layer

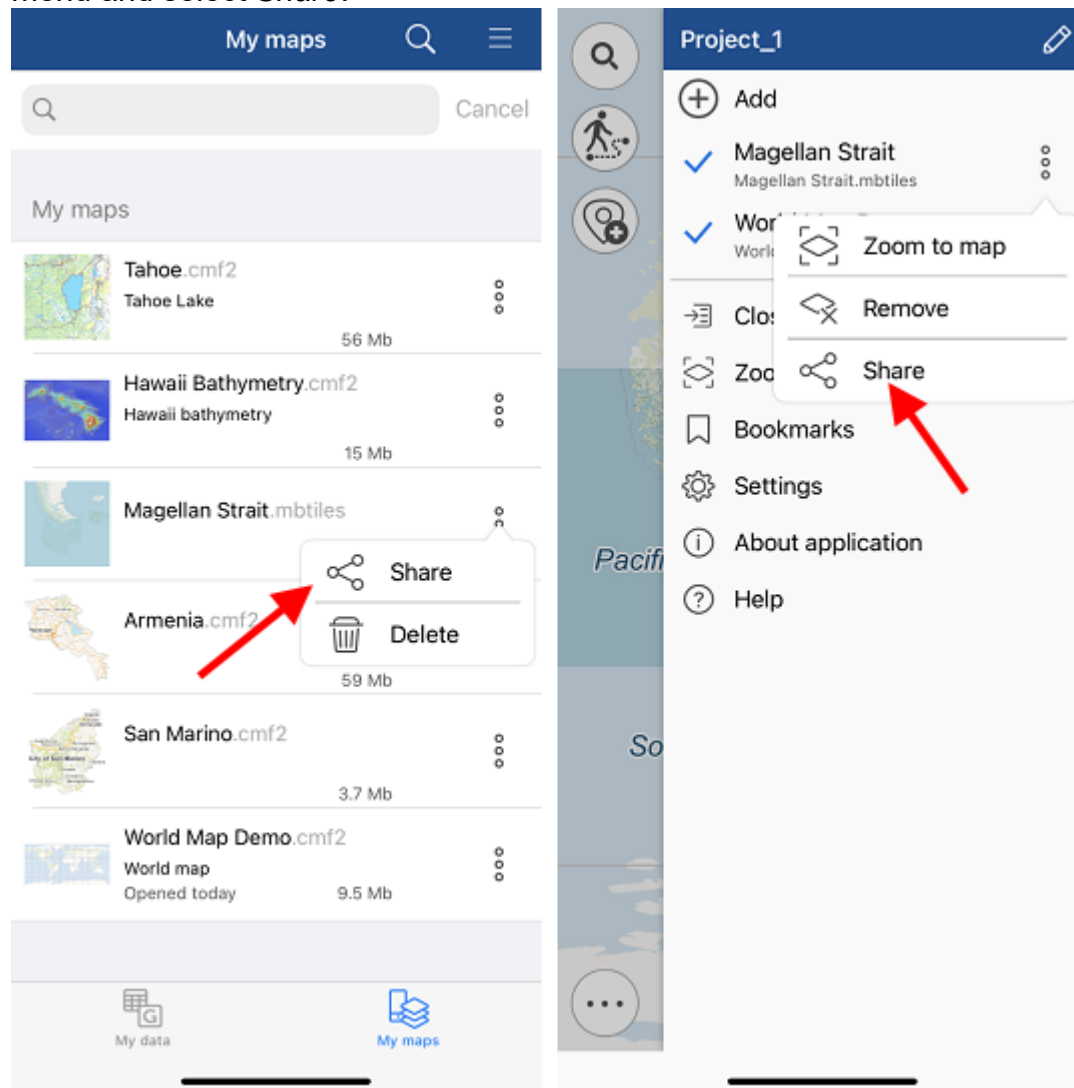
menu and select *Share*.



Then select the method you want to use to share the map file.

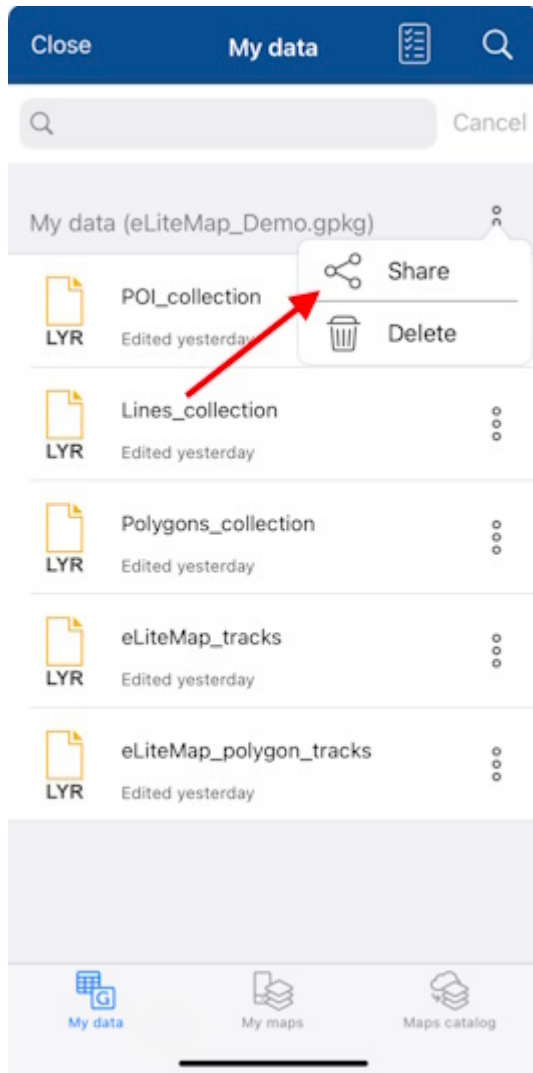
To share a MBTILES file, open the map menu on the My Maps tab on the start page or the Page for adding data and maps layers by tapping three dots and select *Share*.

The MBTILES map can also be shared from the list of project layers. To do this, open the layer menu and select *Share*.



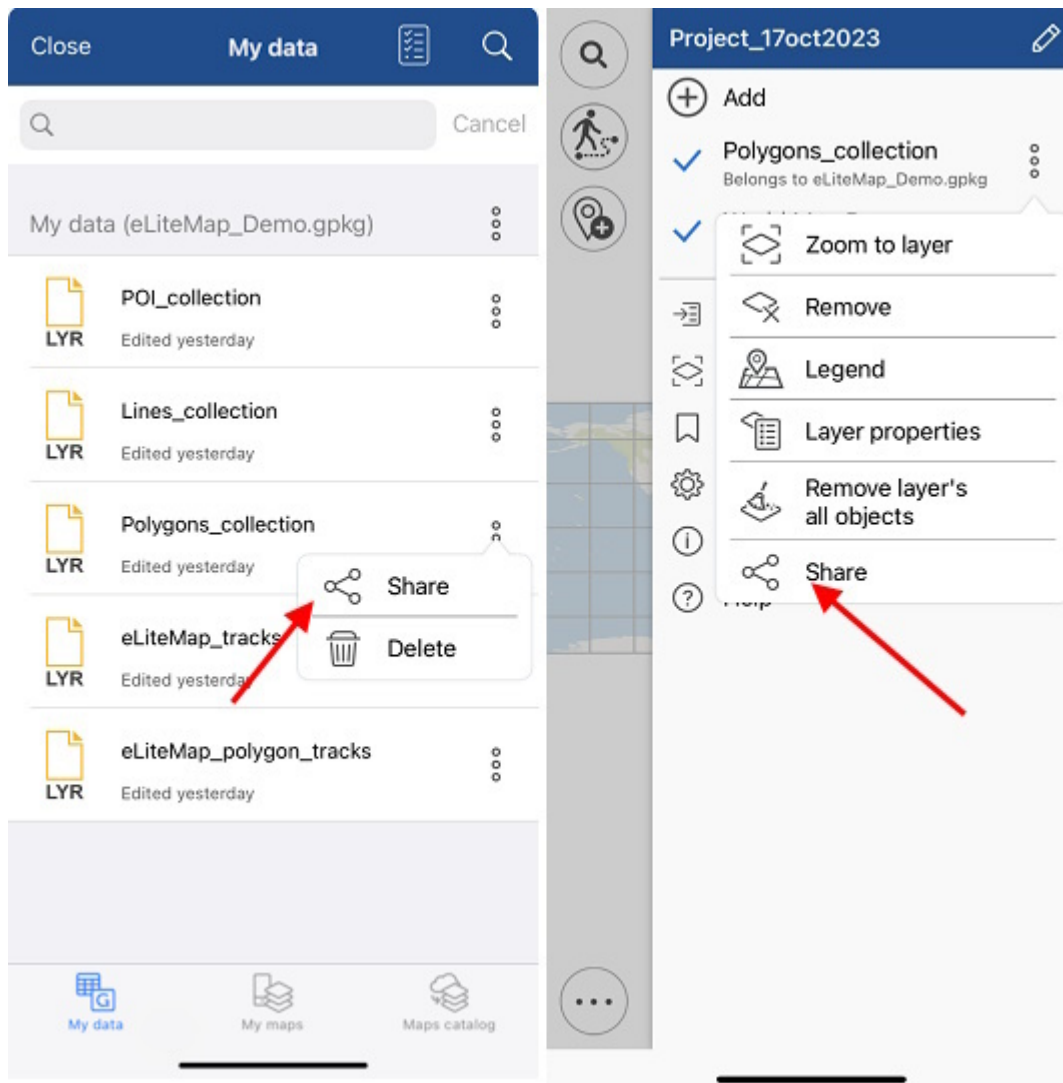
Then select the method of sharing the map file.

To share GeoPackage datasets, .KML/.KMZ, .GPX or .SHP, select the My data tab, open the file menu by tapping three dots, and select *Share*.

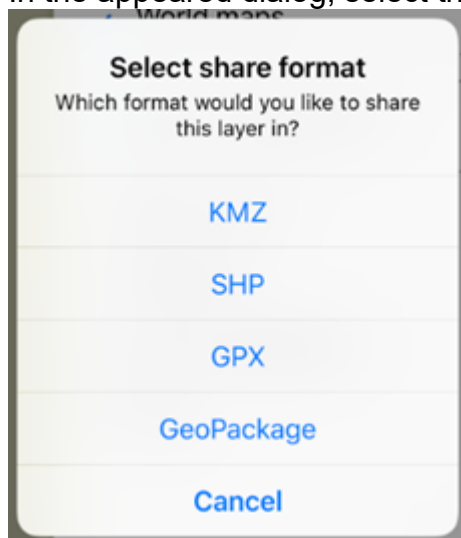


Then select the method you want to use to share the file.

To share GeoPackage file layer, select the My data tab, or open the file menu by tapping three dots, and select *Share*.



In the appeared dialog, select the data format.

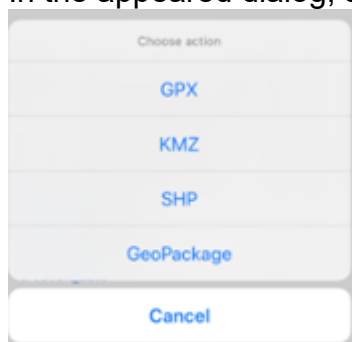


After selecting the format, select the method you want to use to share your file.

Besides, you can share one object of the GeoPackage layer by tapping on it in the map window and selecting *Share* in the card that opens.

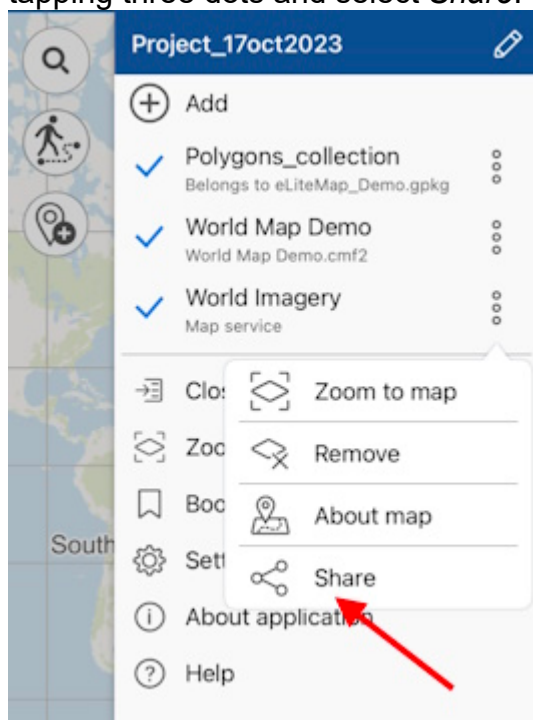


In the appeared dialog, select the data format.



After selecting the format, select the method you want to use to share the file.

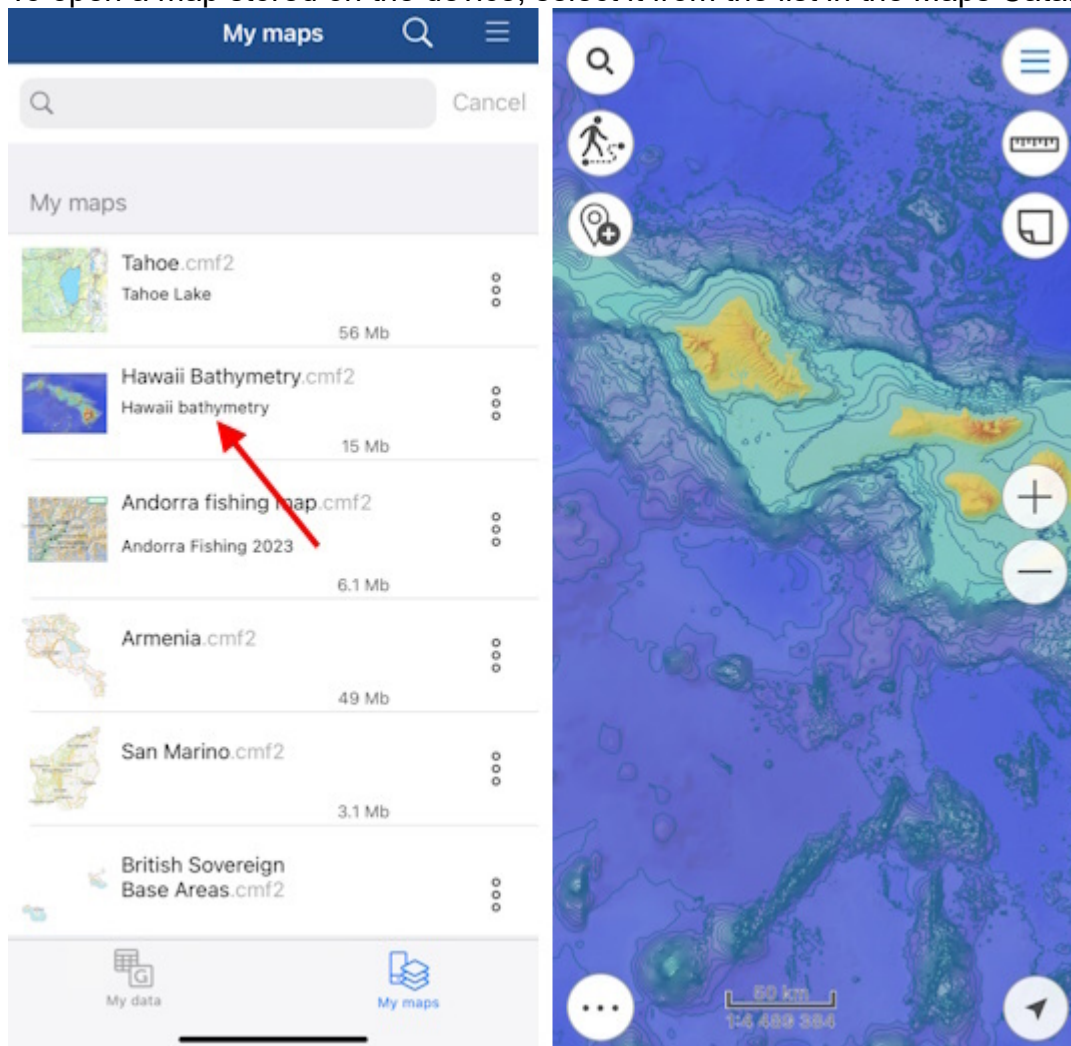
To share a link to an online mapping service, open the layer menu in the project layers list by tapping three dots and select *Share*.



Select the method to share the link.

Opening map


To open a map stored on the device, select it from the list in the Maps Catalog window.

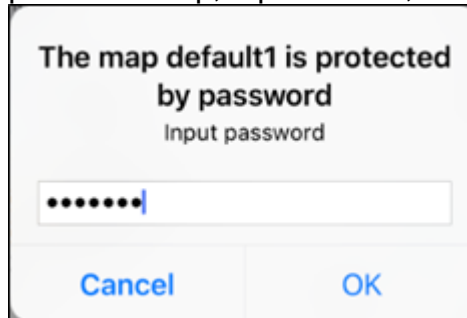


The map will be opened automatically.


Working with protected maps

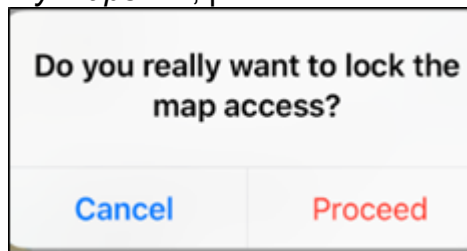
Maps in the CMF2 format can have several types of protection (configured when creating a map), such maps are marked with additional symbols in the Maps catalog.

The maps protected with password are marked with the lock  icon. To open the password protected map, tap its name, enter password in the appeared window and tap *OK*.




The map will be opened in the project. Now access to this map is allowed, to lock it again, go to


My maps tab, press  in the appeared window, and then *Proceed*.



Access to your map is locked and you will need to enter password again to continue working.

Maps that are protected with the validity period are additionally marked in the list of maps only if the validity period of the map has not started yet or has already expired. If the map validity has expired at the time you open it, the map icon looks like  and the corresponding message appears.

The map has expired

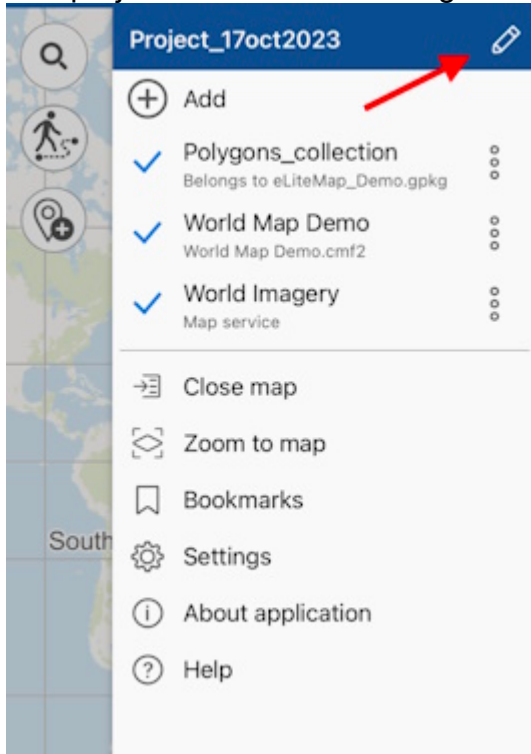
Maps that are protected by device ID are additionally marked in the list of maps only if the access to the map is not allowed for your device. In this case, a symbol  will appear next to the map, and when you try to open such a map, a corresponding message appears.

Access to this map on your device is not allowed

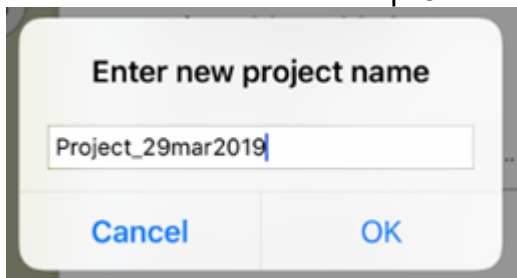
Creating and opening project, editing project name

The project is created automatically when you open CMF2 or MBTILES map and add a layer of any format to it, or when you create point, line, or polygon feature on the map.

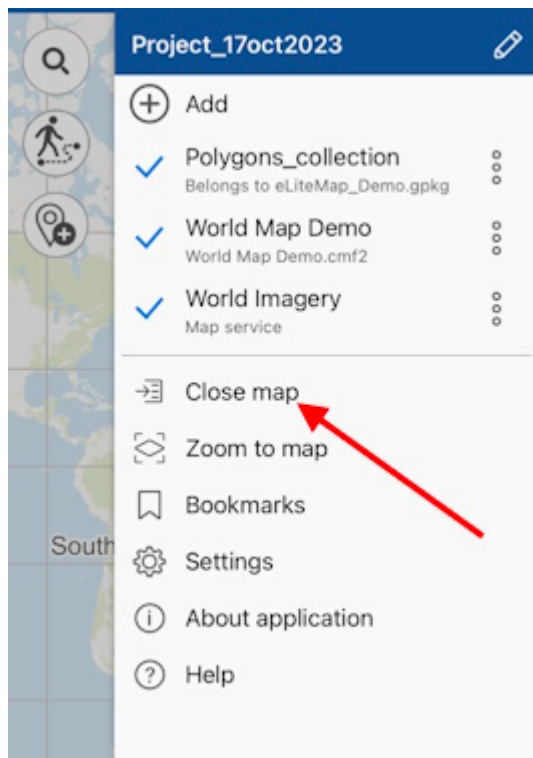
The project name can be changed in the map menu, to do so, tap the editing icon.



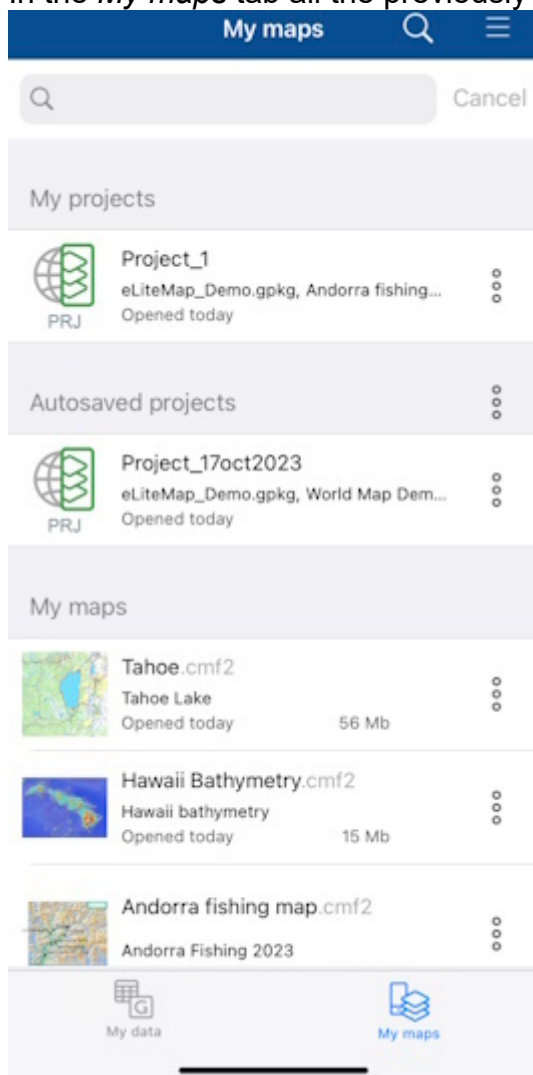
Enter the new name and tap *OK* to save edits or *Cancel* to cancel.



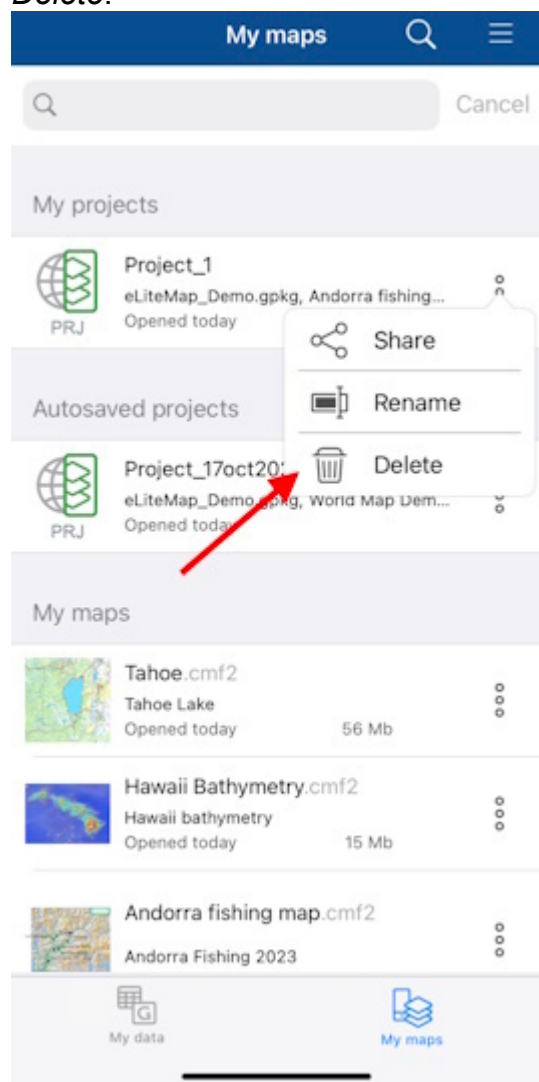
To open the project stored on your device, go to the *Map catalog* by tapping *Close map* button in the Main menu.



In the *My maps* tab all the previously saved and autosaved projects are stored.



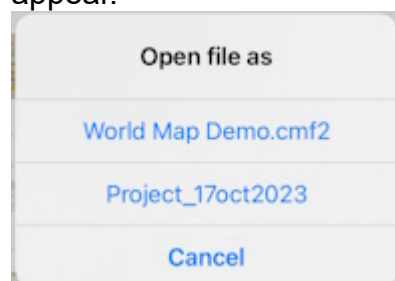
To open project, select it from the list. To delete project, select three dots menu and select *Delete*.



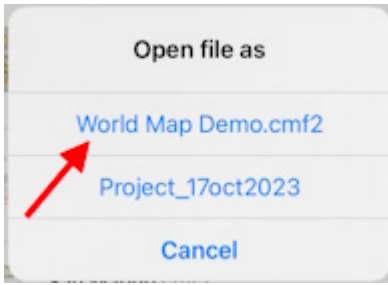
NOTE: Data and maps deleted from the device cannot be restored.

To change name for project, tap *Rename* in the menu, enter the new name, and tap *OK*. If you rename autosaved project, it will be moved to the *My projects* section.


If the selected CMF2 or MBTILES map is used in other projects, the appropriate message will appear.

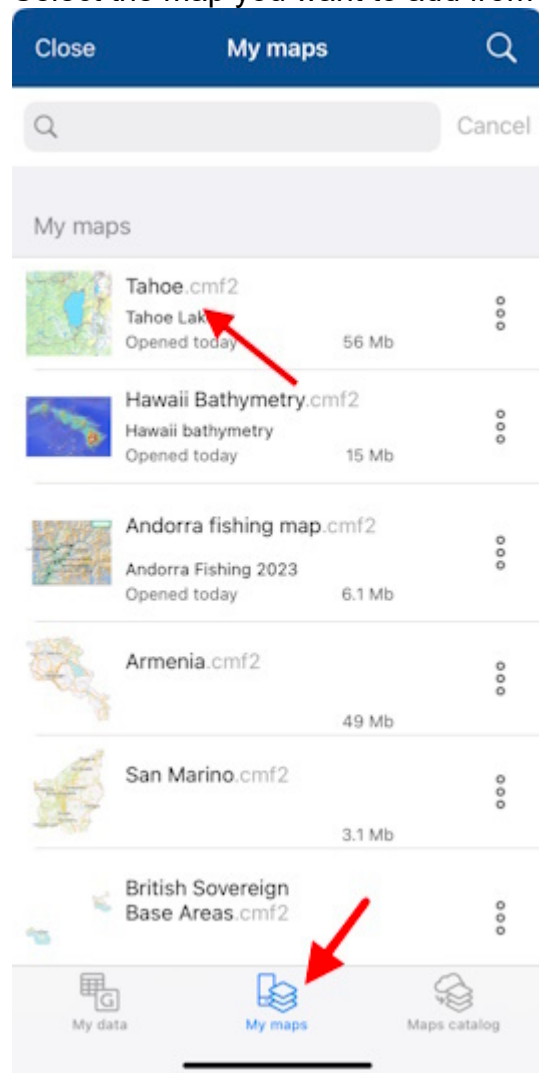


To open map as a project, select the project from the list. If you need to open the map only, select it from the list.

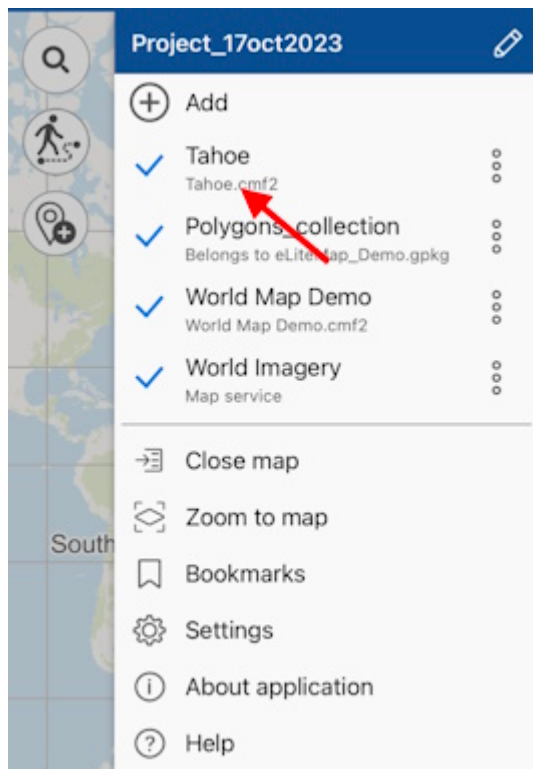


Adding maps and data to project

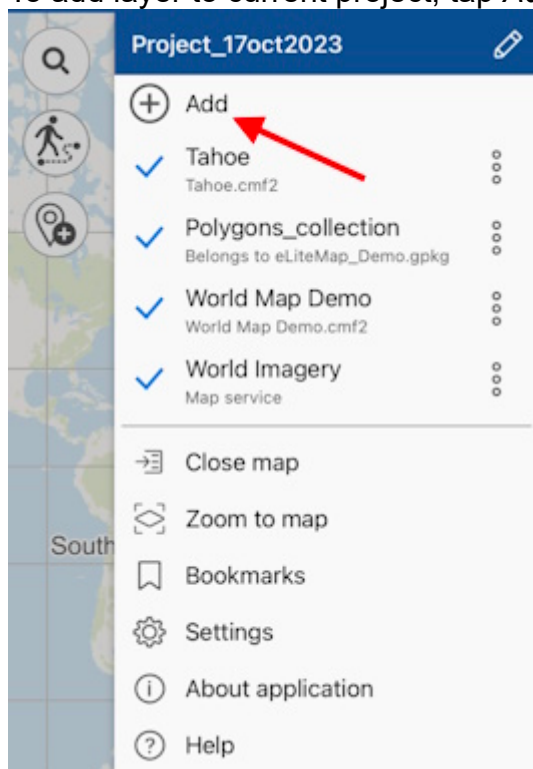
If you want to add map to project, tap  Add and go to *My maps* tab containing all maps in CMF2 and MBTILES formats stored on your device. Select the map you want to add from the list.




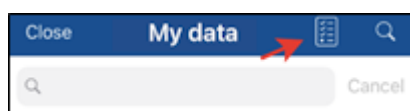
Map will be added to the current project.



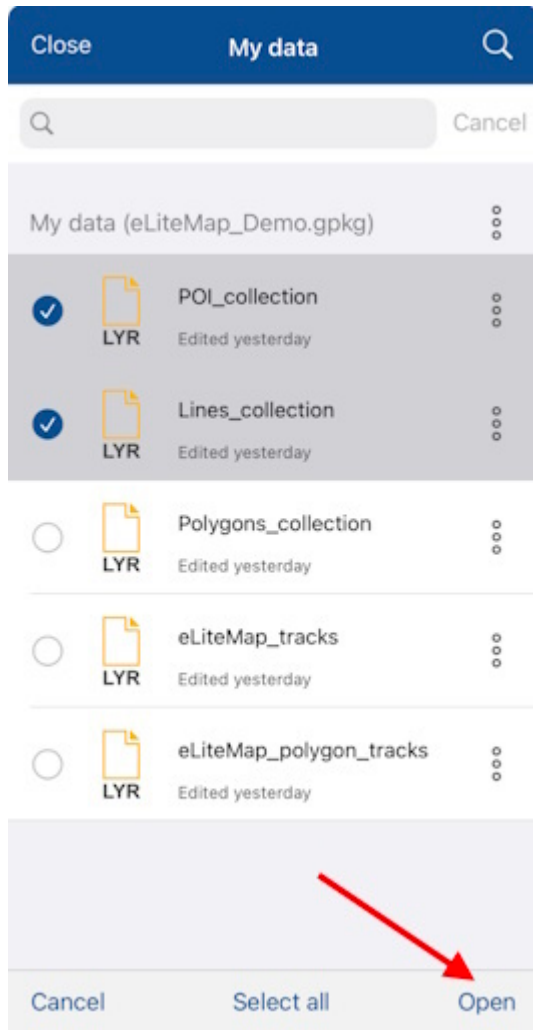
To add layer to current project, tap *Add* button in the map menu and select the *My data* section.



Select the required layer from library and it will be added to your current project. If you need to select multiple layers, tap *Select all*  .



Now tap *Open*.



Selected layers will be added to the project.

Project_17oct2023

Add

POI_collection

Belongs to eLiteMap_Demo.gpkg

Lines_collection

Belongs to eLiteMap_Demo.gpkg

Tahoe

Tahoe.cmf2

Polygons_collection

Belongs to eLiteMap_Demo.gpkg

World Map Demo

World Map Demo.cmf2

World Imagery

Map service

Close map

Zoom to map

Bookmarks

Settings

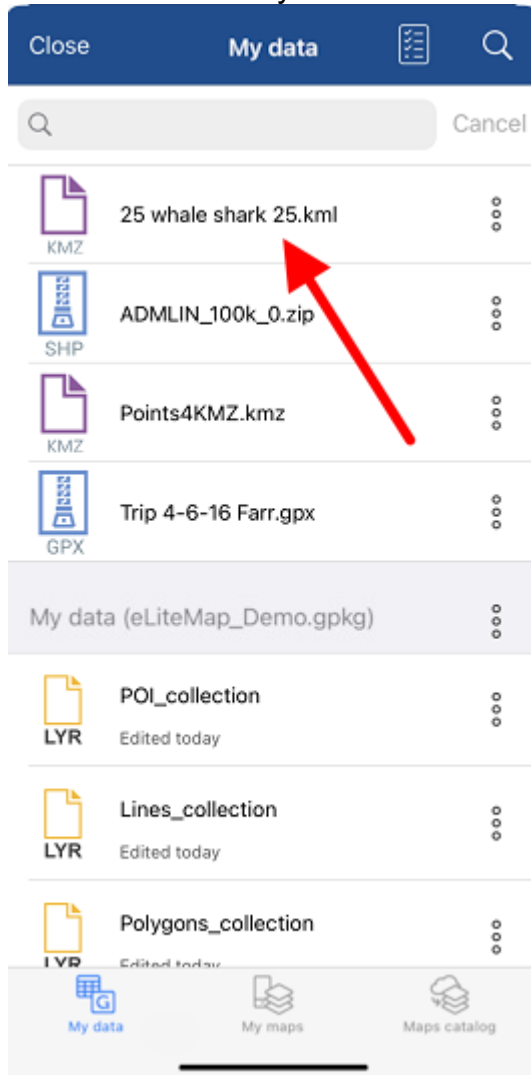
About application

Help

Automatic data conversion

The eLiteMap application works directly and provides access to create and edit objects in layers of GeoPackage format files (see [About GeoPackage](#)). When opening data of other supported formats (KML/KMZ, GPX, SHP), automatic conversion to GeoPackage format occurs.

To open the data of KML/KMZ, GPX, SHP format, go to the page for adding data and select the My data section (see [Page for adding data and maps layers](#)). Click on the selected file, the file will be automatically converted to the GeoPackage layer.



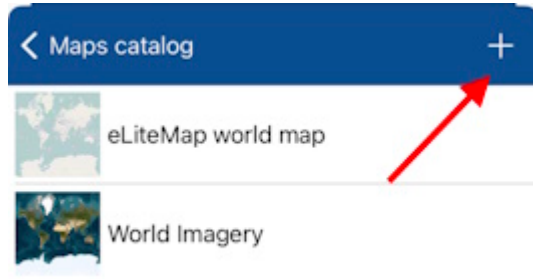
After successful conversion, you will see the corresponding message.

Layer saved to app folder as 25 whale shark 25-1.gpkg

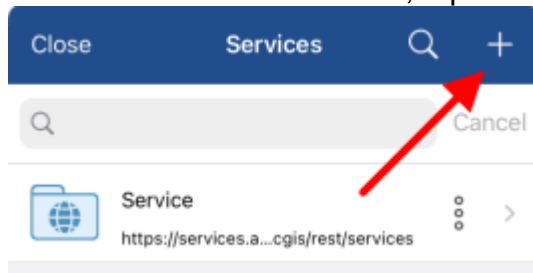
Adding online services

To add the online map service ArcGIS or WMS to your project, tap *Add* button, go to *Maps catalog* and select *Online maps*. You can select the online service from the provided list or add the new one.

To add the new online service ArcGIS or WMS, tap *Add* button.



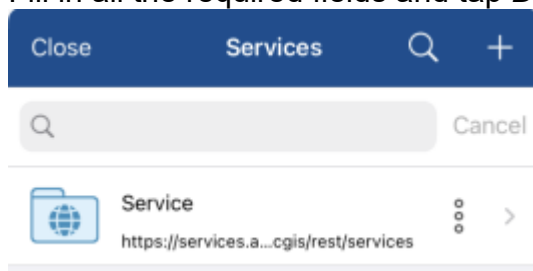
If you already have connected services, they will be shown in the list in the *Services* tab. If you need to add another service, tap *Add*.



Select the required service type, enter its name and link to this service.

A screenshot of the 'Choose map service type' dialog box. The dialog has a blue header bar with 'Close' and 'Done' buttons. The main content area has a title 'Choose map service type'. Below the title, there are two options: 'ArcGIS Service' (which is selected with a blue checkmark) and 'Web map service'. Below the options, there is a 'Service name' field with the text 'Service' entered. Below the name field, there is a 'Type URL of the service or online catalog' field with the text 'http://services.arcgisonline.com/' entered.



Fill in all the required fields and tap *Done*. The added service will be shown in the *Services* tab.

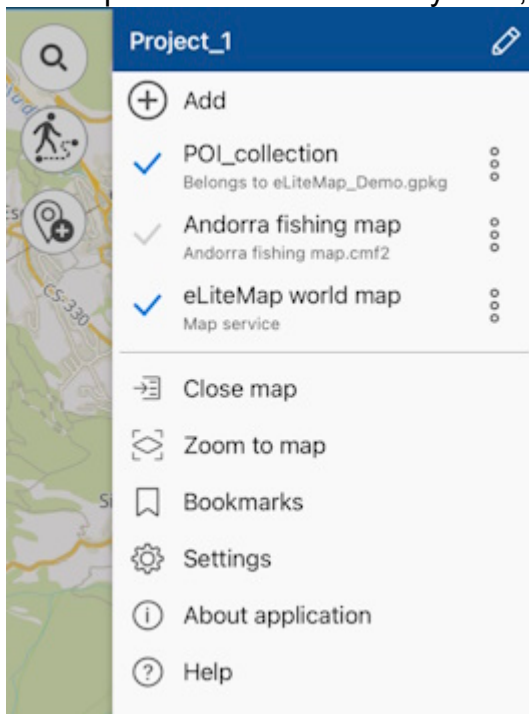


Select the required map from the service and it will be added to your project.

Working with layers in project

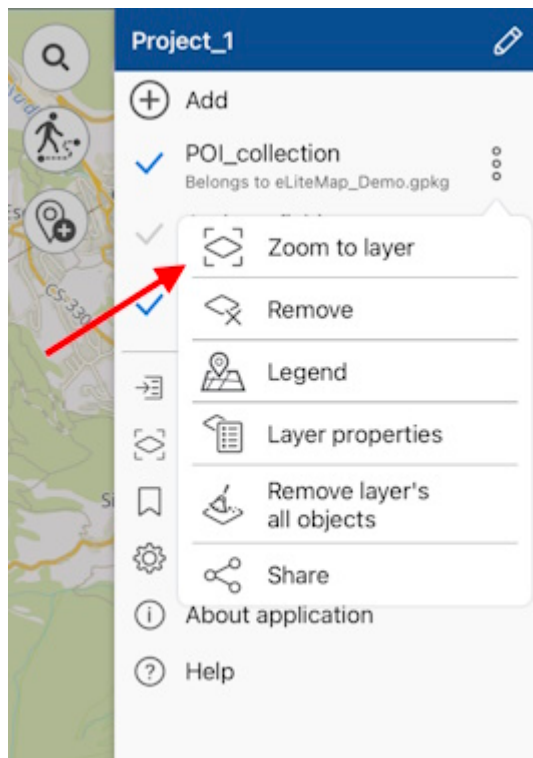
All layers added to project can be viewed in the map menu.

To turn off layer visibility, tap  near the required layer name and the icon will change its color to grey . Note that the layer will not be deleted from the project, it just will not be shown on the map. To turn the hidden layer on, tap the icon near its name again.

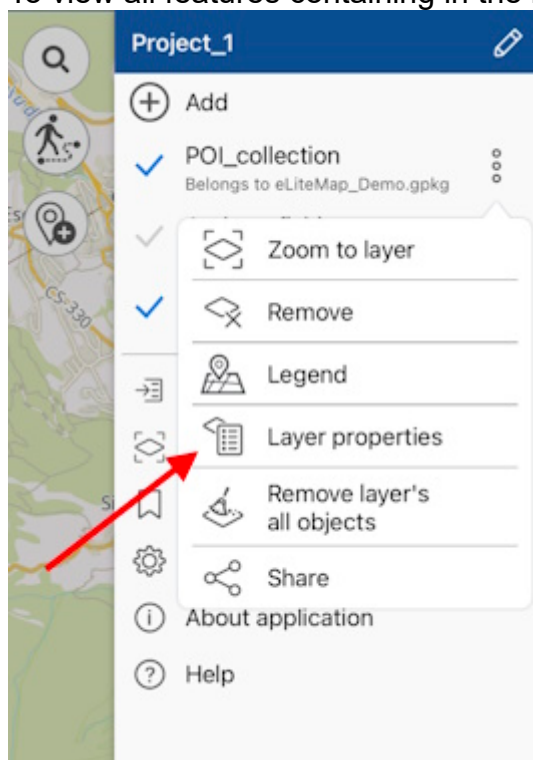


You can change the layers order in the project. To do so, long tap the layer and drag it to the required position in the list of layers. If the layer is the first one in the list, it will be displayed on top of all layers on your map, accordingly.

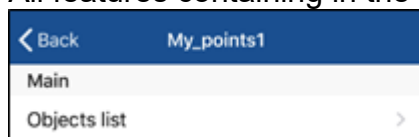
To zoom to layer in the project, tap the three dots menu and select *Zoom to layer*.



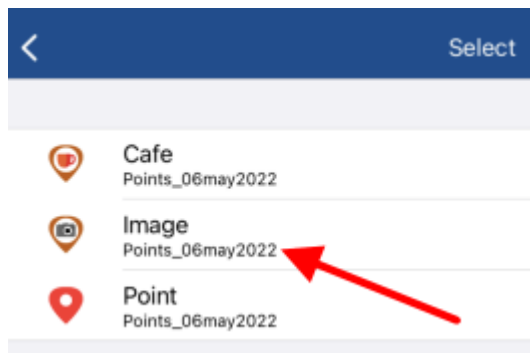
To view all features containing in the layer, press *Layer properties*.



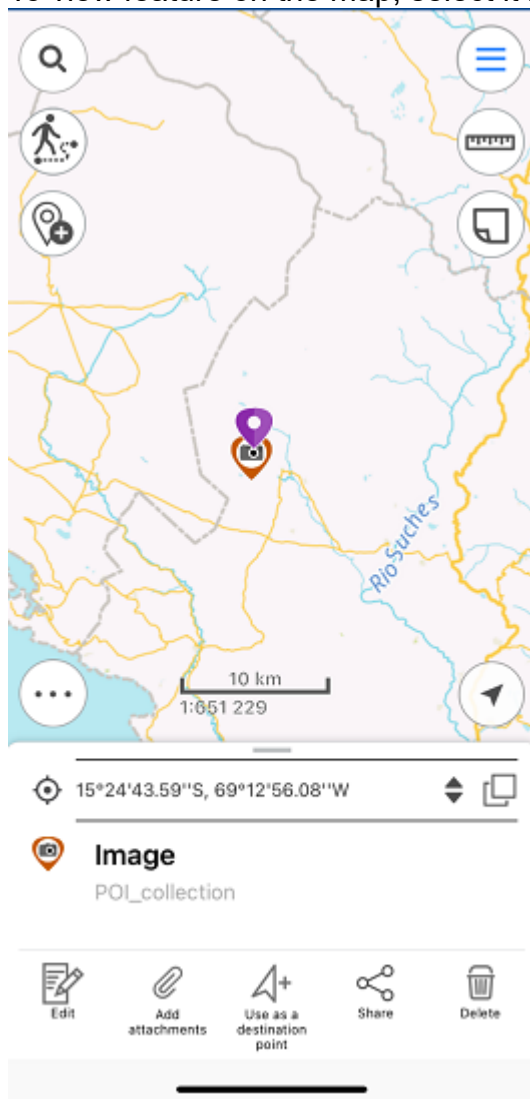
In the appeared window select *Features list*.
All features containing in the layer will be shown in the list.



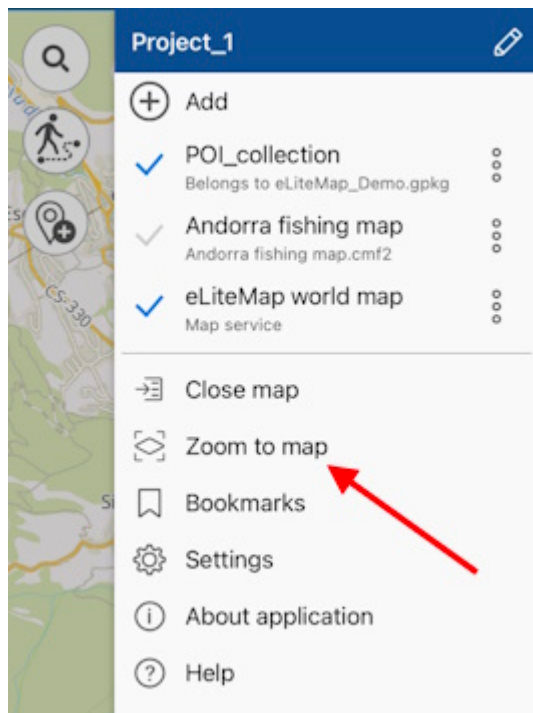
Another option to view all features in layer is to tap the layer in the map menu.



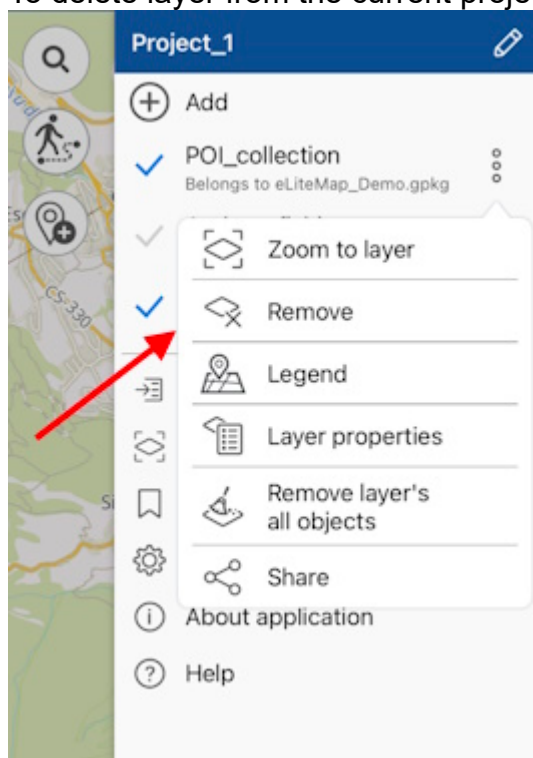
To view feature on the map, select it in the list and it will be highlighted on your map.



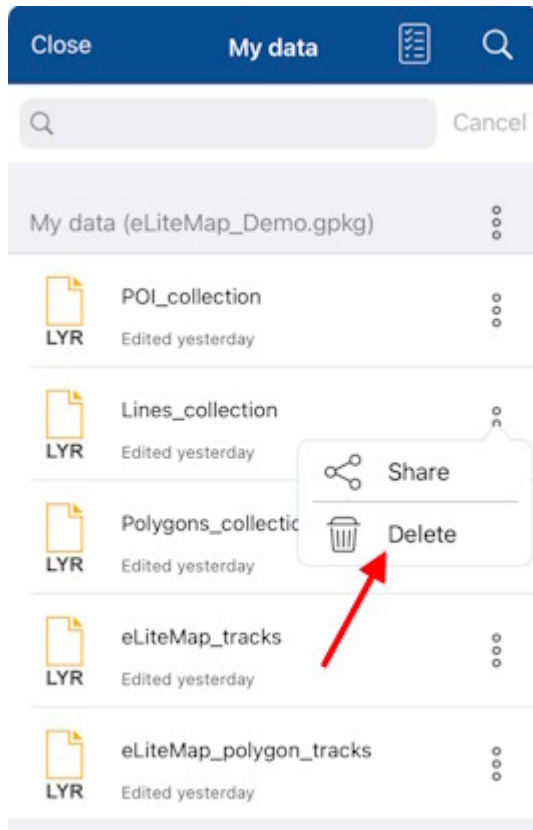
To zoom to all layer in the project, tap *Zoom to map* button in the Main menu.



To delete layer from the current project, tap three dots menu and select *Remove*.



To delete layer from the device, go to the *My data* tab and select and select *Delete from device* by tapping the three dots menu of the layer you want to delete.

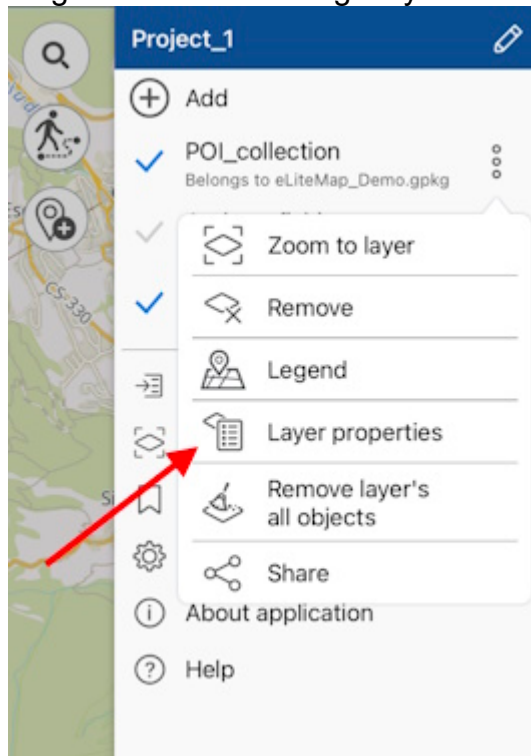


The layer will be deleted from the device.

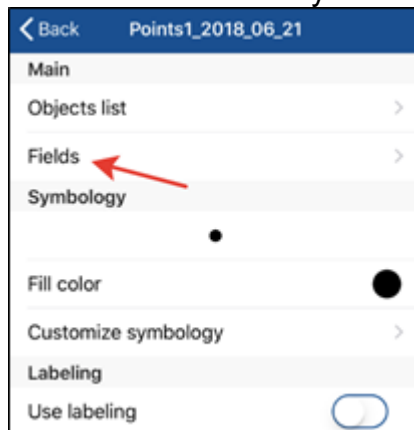
NOTE: Data and maps deleted from the device cannot be restored.

Changing layer settings

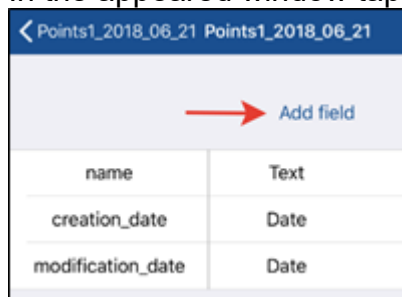
To go to the GeoPackage layer settings, select the *Layer properties* by tapping three dots.



To add fields to the layer attributes, tap the *Fields* section.




In the appeared window tap *Add field* button.



In the appeared window enter the name of the new field, then tap *OK*.

Now select the required field type from the list.

To delete created field, tap *Delete* . To save made changes, tap *Save* in the upper part of the window.

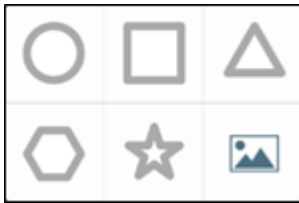
To change the object fill color, select *Fill color* in the *Layer properties* menu.


In the appeared list select the required color and all features will be changed accordingly.



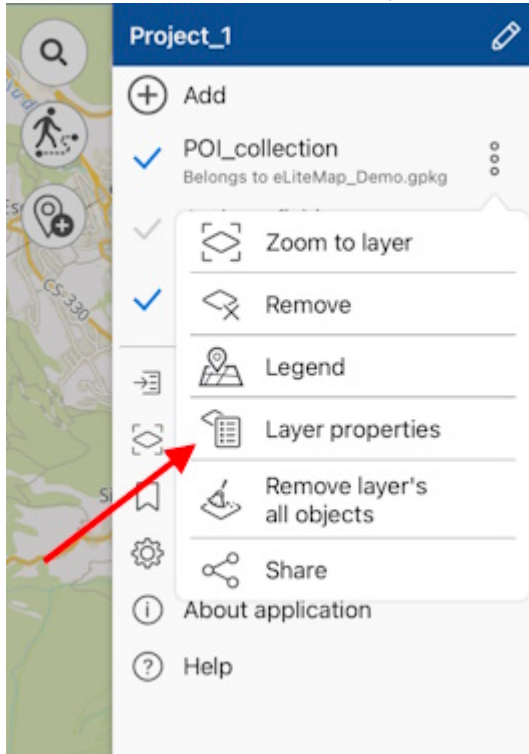
To change properties of the layer symbology, select *Customize symbology*.

With the *Customize symbology* option you can change the symbol shape, size, show/hide its border and select border color, set transparency. To change symbol shape, tap *Shape* and select the required shape from the appeared list.

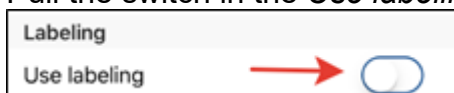


To select image as symbol, tap  and select the required image from the Gallery.

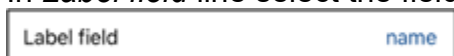
To show labels for features, select *Layer properties*, tapping three dots menu.



Pull the switch in the *Use labeling* section to display labels.



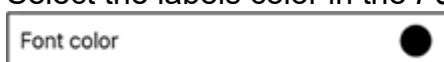
In *Label field* line select the field which attributes will be used to label all features.



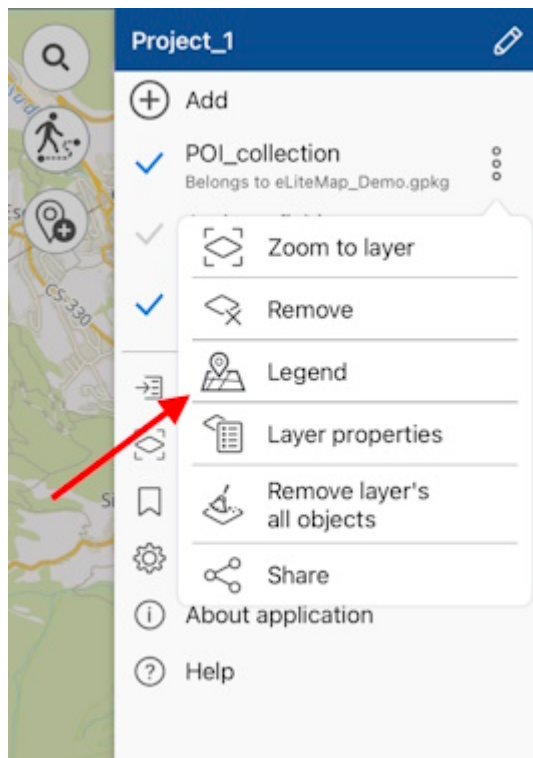
To add the new field, see “*Setting layer symbology. Adding new fields*” section above.
In the *Font size* line specify the font size pulling the shift to the required value.



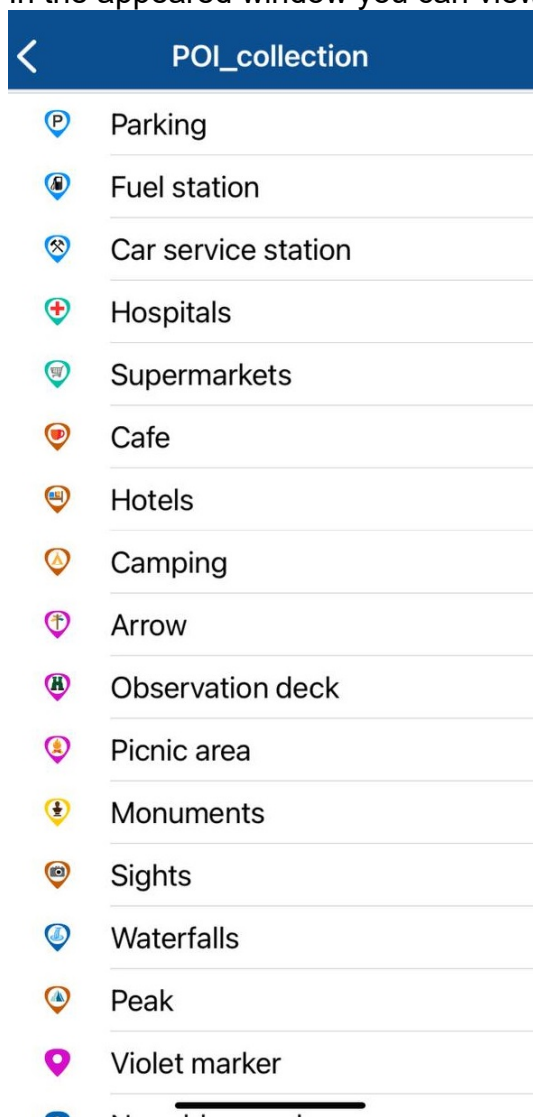
Select the labels color in the *Font color* line.




To view symbology used for layer, tap three dots, and select *Legend* in the menu.



In the appeared window you can view all symbology used to display this layer.



It is also possible to change the visibility of layers of the CMF2 maps individually. To turn the layer off, tap the *layer visibility button*  .

About GeoPackage

GeoPackage (GPKG) is an open geospatial data format that is not associated with the operating system and is implemented in the SQLite database container format. The format is widely used among professional cartographers due to a number of its advantages. In comparison with the SHP format files, GeoPackage can contain a lot more features (about 100 million), but at the same time it remains as light as possible, and unlike the GPX format, which transmits only lines and points, GeoPackage can transmit all types of mapped features (points, lines, polygons), as well as attachments to them in a single file.

Creating new feature

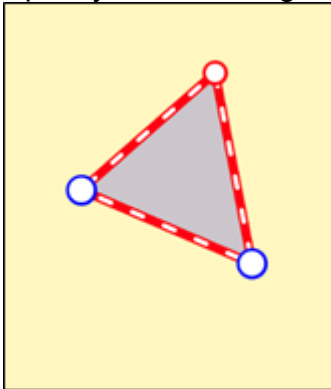
To create new feature on the map, tap the *Create feature* button.



In the appeared menu select the feature type: point, polyline, or polygon.

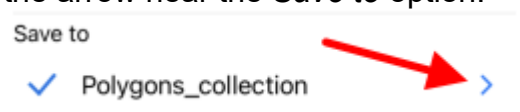


Specify the feature geometry. To do so, consequentially tap the required places on your map.



To delete the needless point on the map, tap it. To add the new point, pull the edge in the needed place and the point will be added there. To change location of the created point, tap and hold it, then drag it to the new place on the map.

Now select the layer where you want to create the new feature. To do so, in the feature card tap the arrow near the *Save to* option.



In the appeared window you can either select the layer from the currently opened project, or select the previously created layer in the application, or create the new layer.

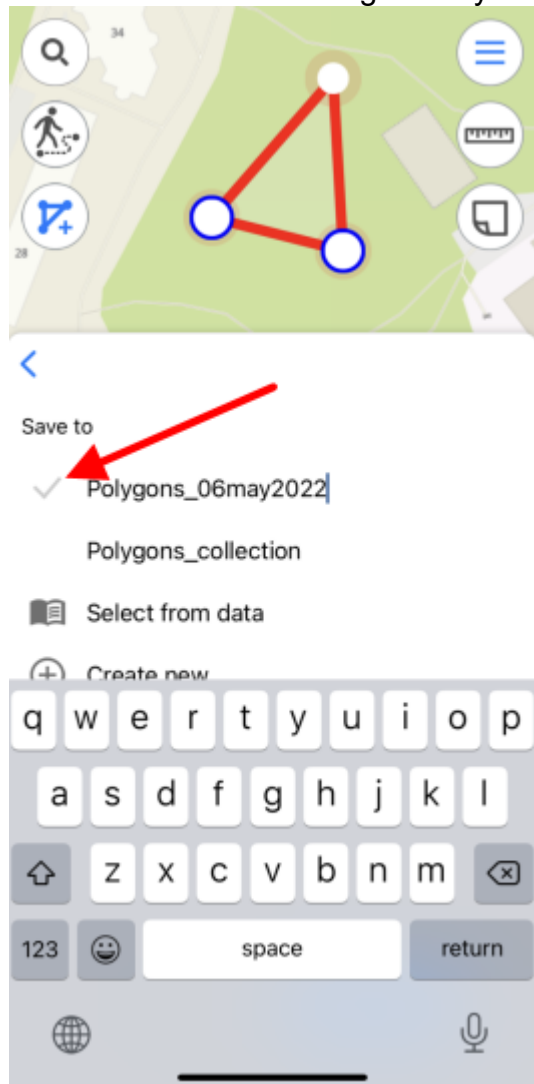
To select the layer from the existing data, press *Select from data* and select the required layer from the list of GPKG layers stored in the application.

 Select from data

To create the new layer, press *Create new*.

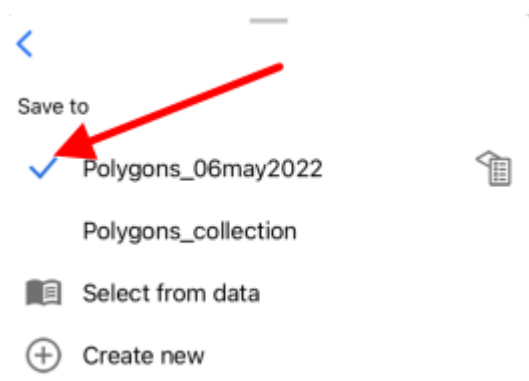
 Create new

The layer will be automatically created with the default name, but you can rename it, to do so, enter the new name using the keyboard.

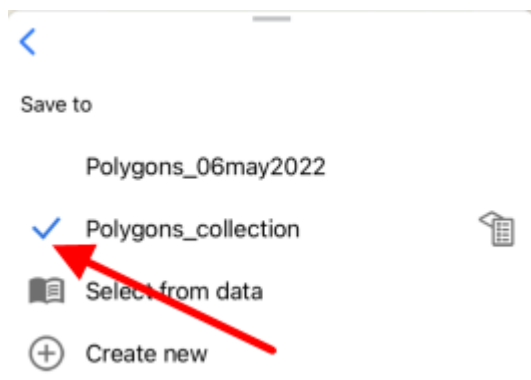



To confirm the layer name, tap the tick mark near the layer or tap *Enter* on the keyboard.

If there are previously added layers in the project, then to create the feature you need to select the required layer from the list. The selected layer will be marked with the check sign.

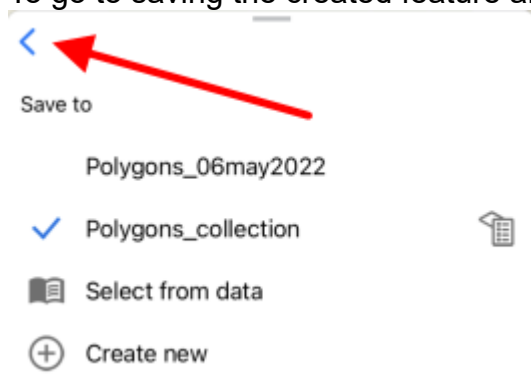


To select another layer, press its name in the list and it will be marked with the blue check sign.



To go to changing parameters of the layer settings, press . See [Changing layer settings](#) section for more details about changing layer settings.

To go to saving the created feature and filling in the fields, press the back arrow.




To fill in the *Feature name* and *Description* fields, tap the required line and enter the text.

 A screenshot of a mobile application's feature creation form. At the top, there is a location field showing '00° 00' 00" N 000° 00' 00" E'. Below it, 'Area' is '1 078,14 m²' and 'Perimeter' is '152,91 m'. There are four icons: 'Take photo/video', 'Record audio', 'Add from gallery', and 'Add file'. Below these is the 'Save to' section with 'Polygons_collection' selected and a right arrow. The 'Name' field has a red square icon and a red arrow pointing to it. The 'Description' field is labeled 'Description' and has the text 'Not defined'. The 'Type' field is labeled 'Type' and has the text 'My polygons'. At the bottom are 'Cancel' and 'Create' buttons.

To complete creation of the feature, press *Create*. The feature will be saved. If you need to cancel this operation during the feature creation process, press *Cancel*.

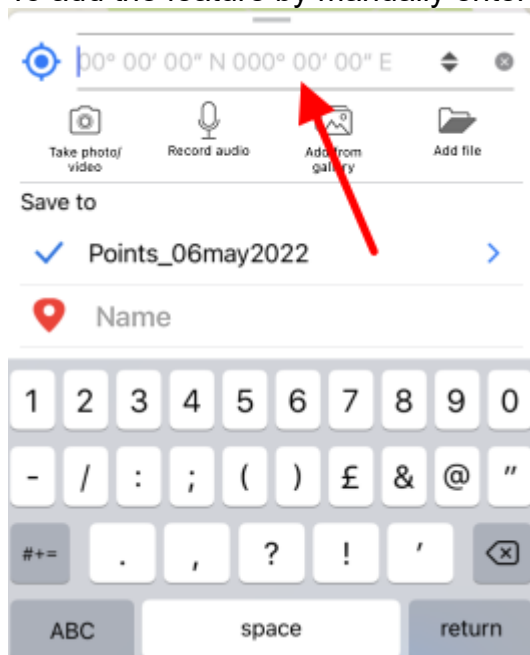
Creating features by coordinates

To create the feature by coordinates, during the creation process go to the line for entering coordinates in the feature identification card (see [Creating new feature](#) section for details).

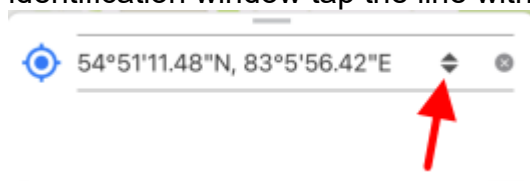
To create the feature by your current location, press *Coordinates by location*  button in the identification card of the created feature.

Coordinates of the point feature will be changed to coordinates of the current location. The new point with coordinates of your current location will be added to the created polygon or polyline feature.

To add the feature by manually entered coordinates, go to the line for entering coordinates.



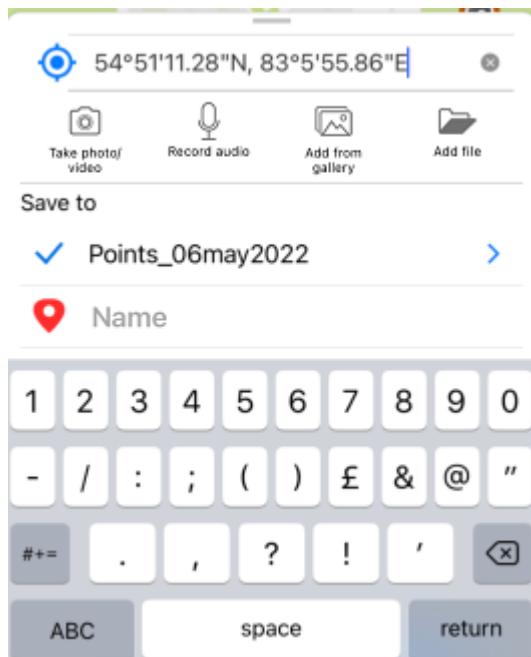
You can change coordinates format, if needed. To do so, select the feature and in the appeared identification window tap the line with coordinates to change the format.



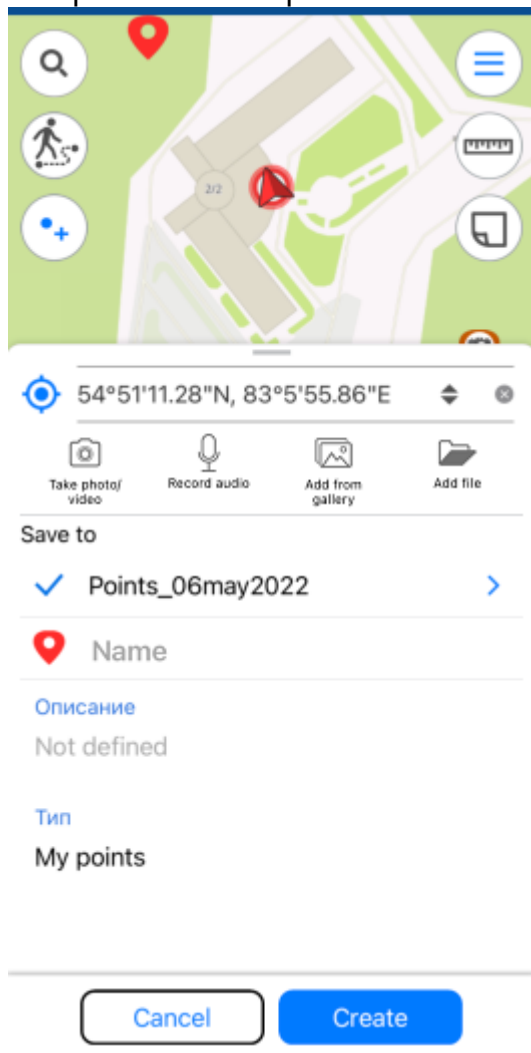
The available coordinate formats are as following:

- Degrees-minutes-seconds;
- Decimal degrees;
- UTM meters (if you selected Projected coordinate system in [Application settings](#)).

Enter the required coordinates and press *Return* on the keyboard.



The point with the specified coordinates will be added on the map.



To save the point, press *Create*.

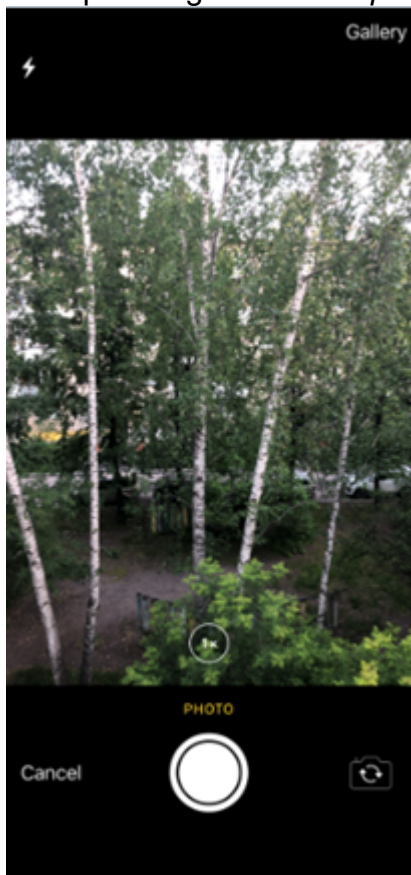
Creating point feature by photo

To create the new point feature by photo, press *Create feature* button in the map window and in the appeared menu select *Create point by photo* button.

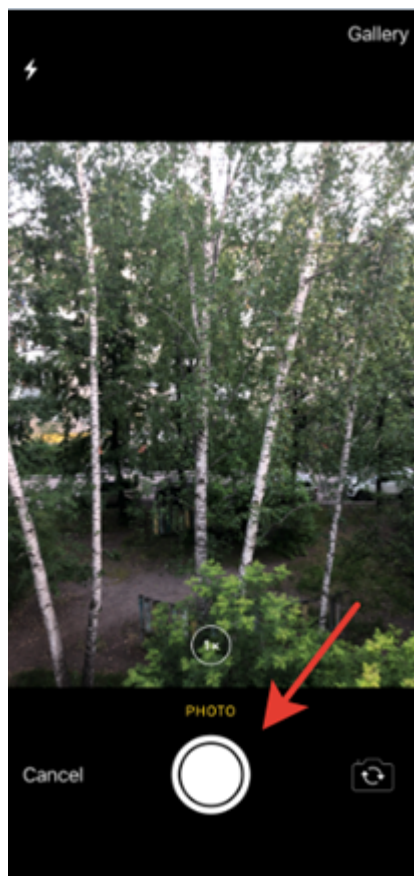


NOTE: To be able to use this option, in your smartphone settings you need to allow eLiteMap app to have access to the device camera (see [Application permissions](#)). Besides, for all photos made with your device, the option of using geolocation should be enabled.

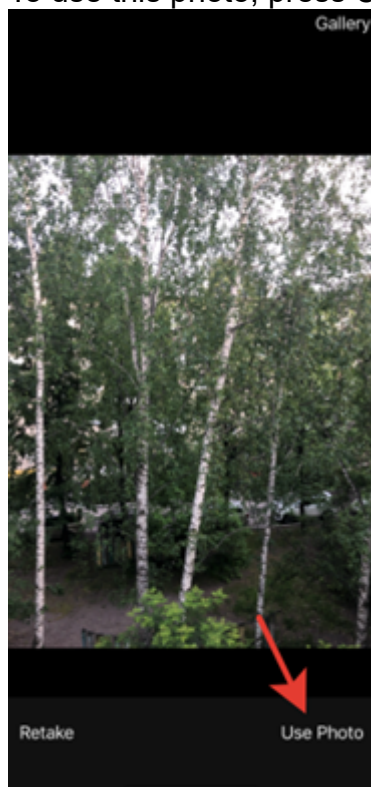
After pressing the *Create point by photo* button the camera window will open.



Press *Take photo* button.

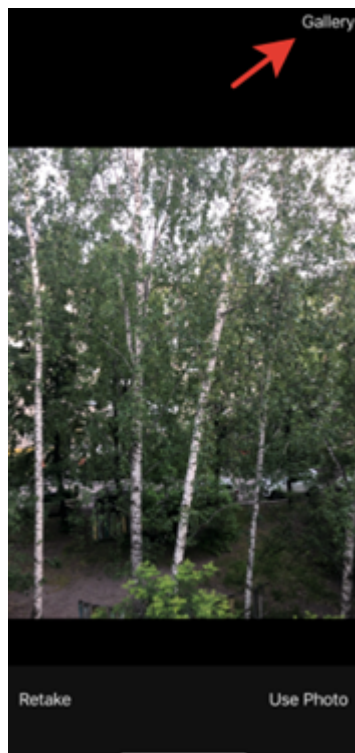


To use this photo, press *Use photo*.

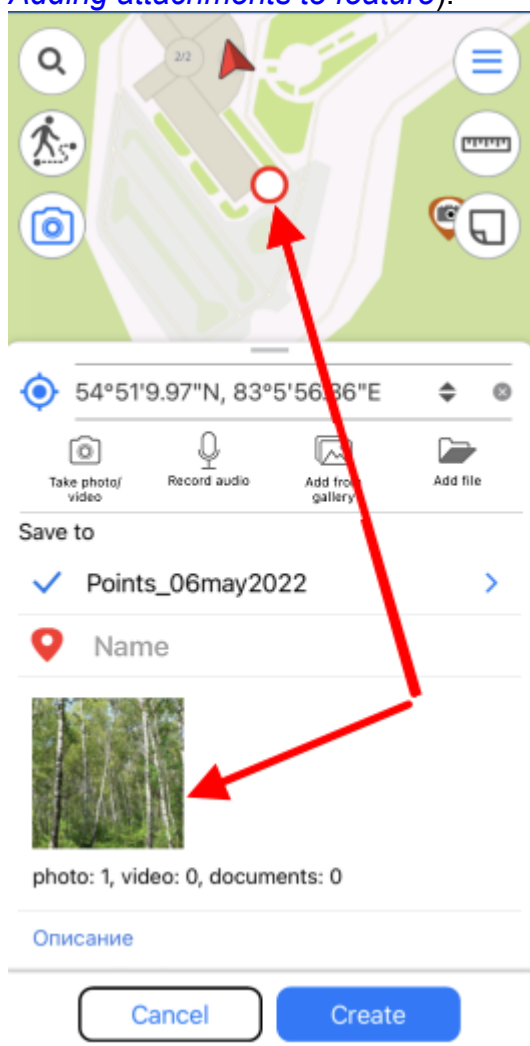


To take another photo, press *Retake*. In the appeared camera window take the new photo and press *Use photo* again.

To use the existing photo, press *Gallery*.



Select the required photo from your Gallery. Now coordinates of selected photo will be used to create the point on your map and this photo will be added as attachment to the point (see [Adding attachments to feature](#)).



Changing the layer and its settings is done same as when creating features, see [Changing layer settings](#) section for details.


To complete creation of point by photo, press *Create* button

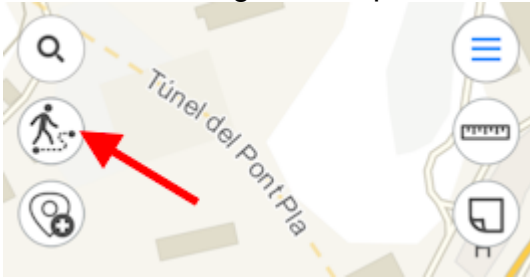



To cancel creation of point by photo, press *Cancel* button



Recording track. Creating polygon by track.

To start recording track, tap  .



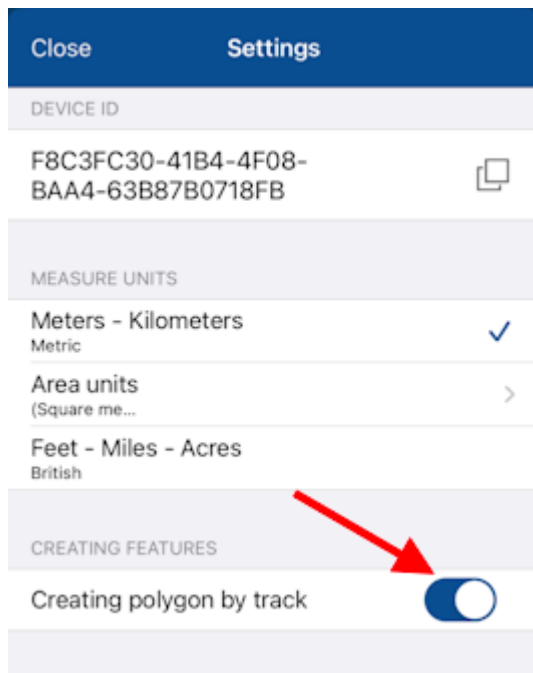
If in the [Application settings](#) the display of the *Create polygon by track* button in the map window is enabled, then to record a track, tap  and select *Record track* in the appeared menu.



To create polygon by track, tap  . In the appeared menu select *Create polygon by track*.



Note, that the *Create polygon by track* button is not available in the map window by default. To add the *Create polygon by track* button to the map window, go to [Application settings](#) and change the switch position in the appropriate section.

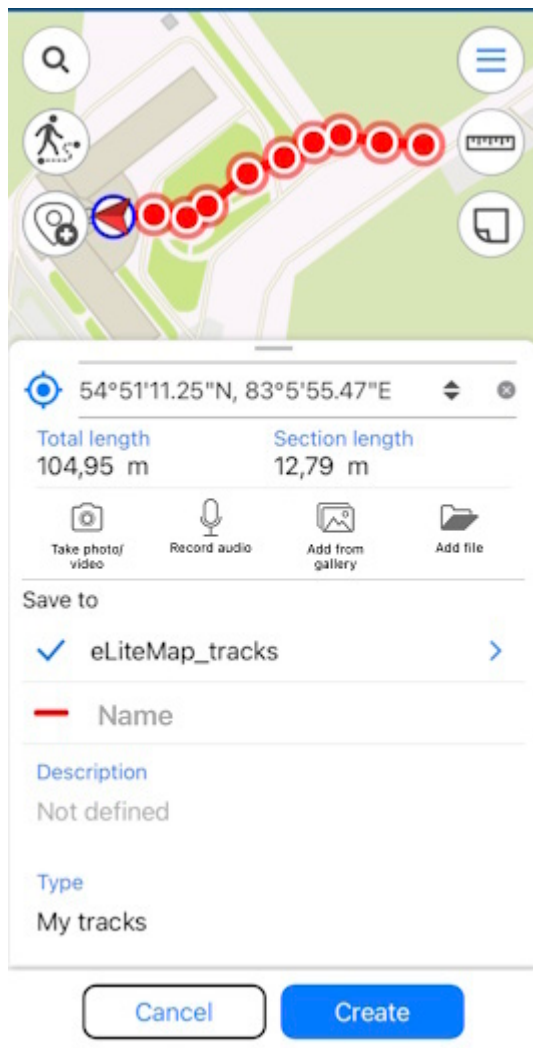


When recording track or creating polygon by track starts, the tool button becomes red.



To complete recording track or creating polygon by track, press the tool button  again.

In the appeared window select the layer where to you want to save your track or polygon. Enter the track name in the *Feature name* field, if needed.



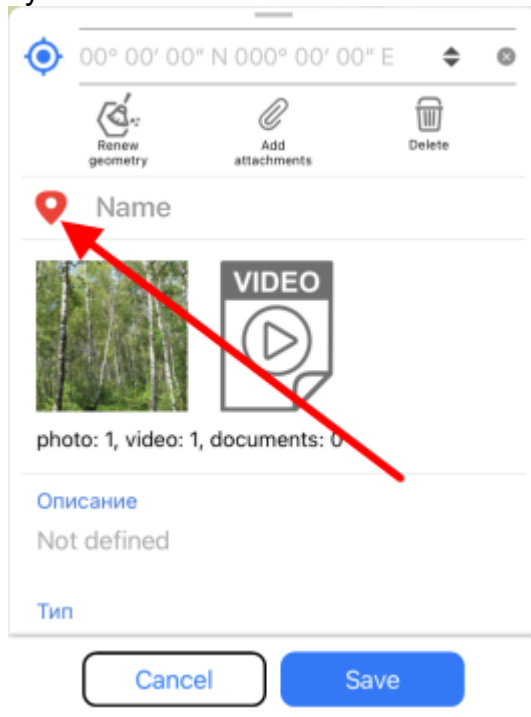
Note that every 5 seconds your track will be saved automatically. That is, even if your device switches off by some reason, the track will be automatically saved to the selected layer and so will not be lost.

Note that recording track does not hinder any other operations provided with the app (for example, feature creation or editing, adding new layers to project, etc.).

NOTE: For the track recording function to work correctly and create polygons by tracks, we recommend that you provide the application access to your location in any mode (including in the background), otherwise the application will not be able to receive data about your location in the background, and the track line will be built incorrectly (see [Application permissions](#)).

Selecting symbol when creating feature in the existent layer

When creating the feature in the existent or the newly created layer you can specify different symbols for features of one layer. To do so, create the new feature and select the required symbol in the feature card.



00° 00' 00" N 000° 00' 00" E

Renew geometry Add attachments Delete

Name

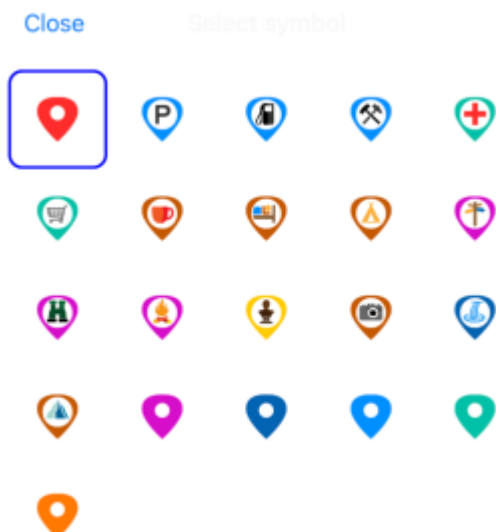
photo: 1, video: 1, documents: 0

Описание
Not defined

Тип

Cancel Save

In the appeared list select the required symbol.

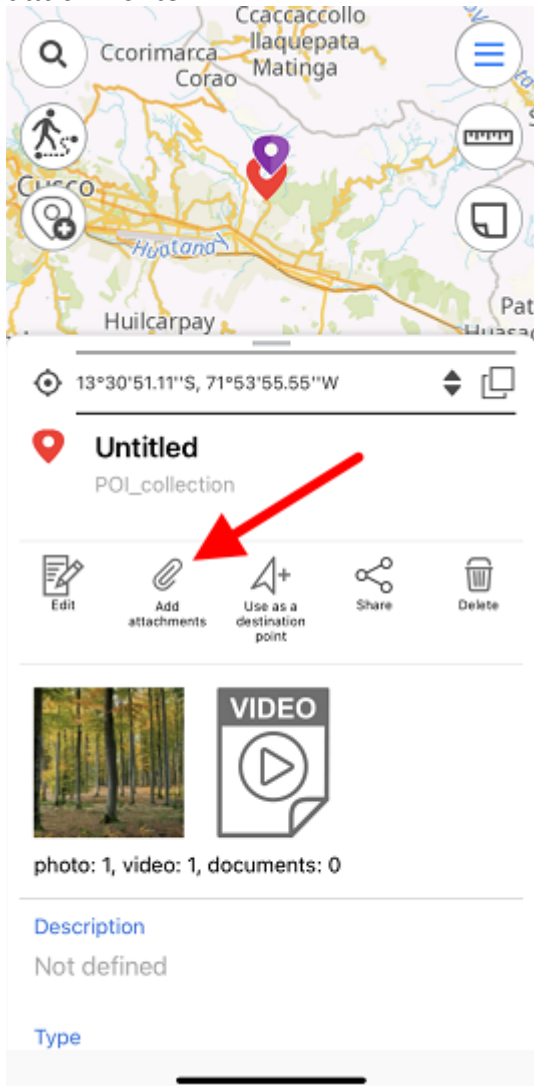


Tap  button.

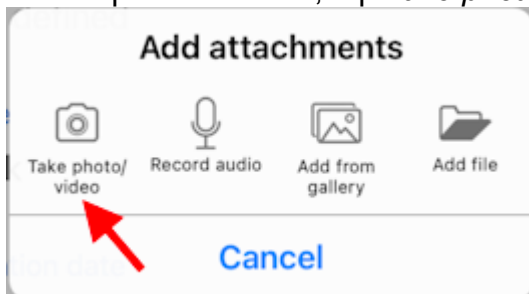
Changing symbology for the feature is also possible when editing mode is on (see [Editing features](#)).

Adding attachments to feature

You can add attachments to any feature on the map. To do so, in the feature card tap *Add attachments*.

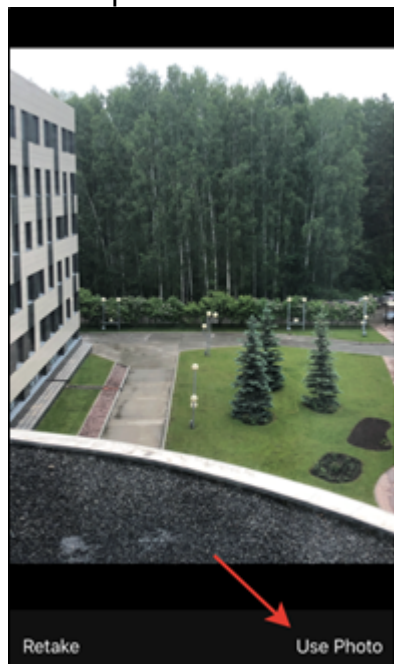


To add photo or video, tap *Take photo/video*.

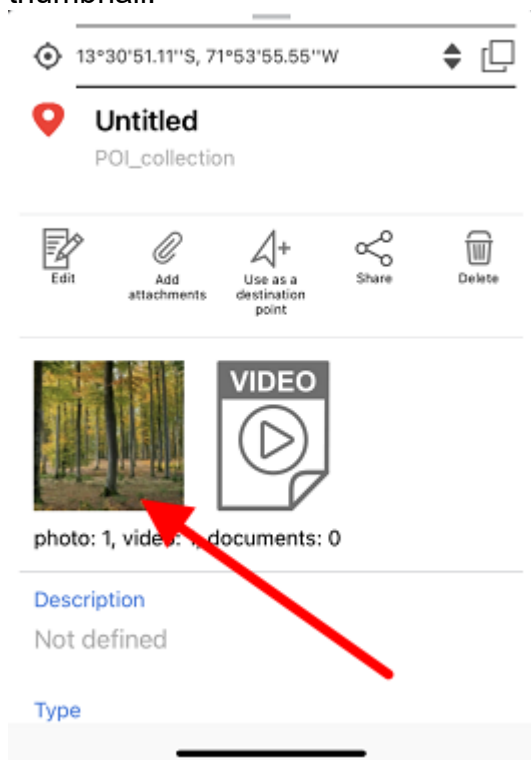


To be able to use this option, in your smartphone settings you need to allow eLiteMap app to have access to the device camera and memory (see [Application permissions](#)).

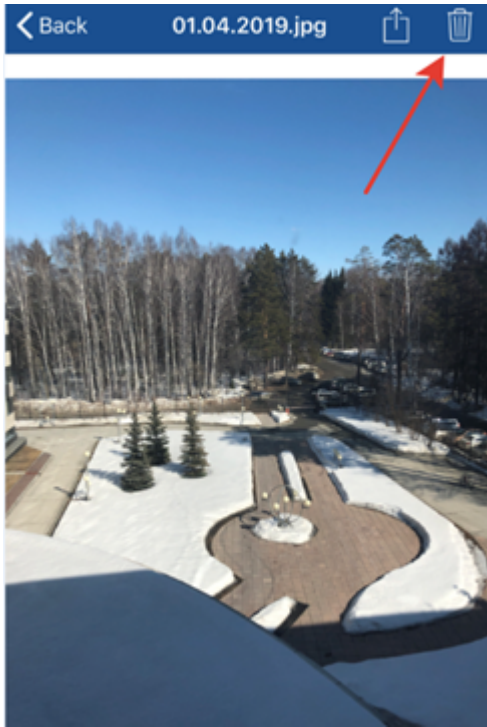
Take a photo or video and tap Use photo, to add it as attachment to the feature.



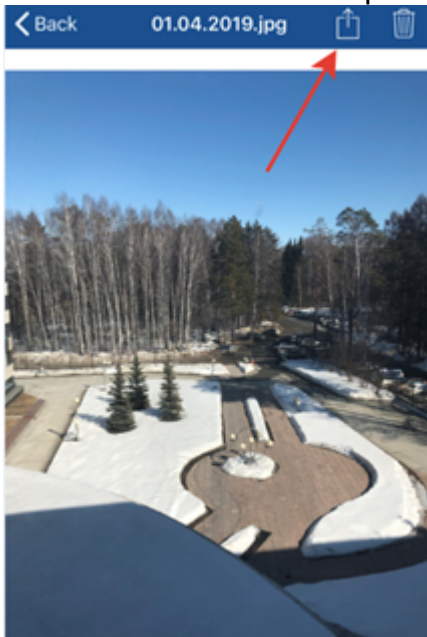
Added photos can be viewed in the feature's card. To open the photo, tap the appropriate thumbnail.



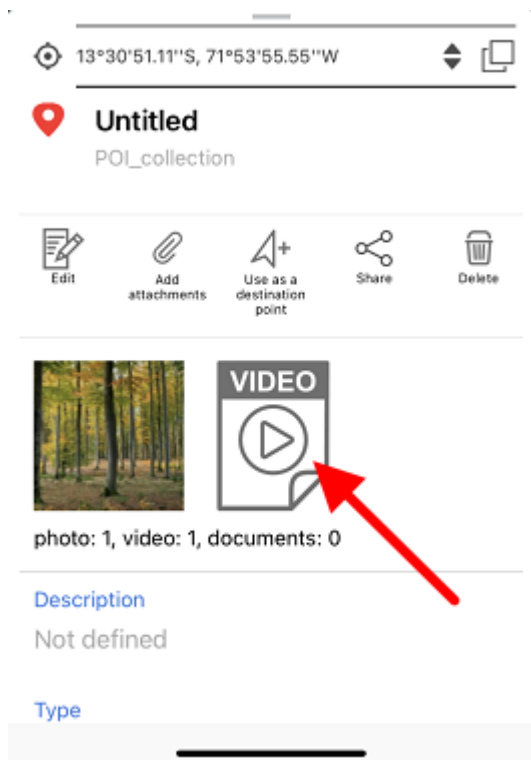
To delete the added photo, tap *Delete*.



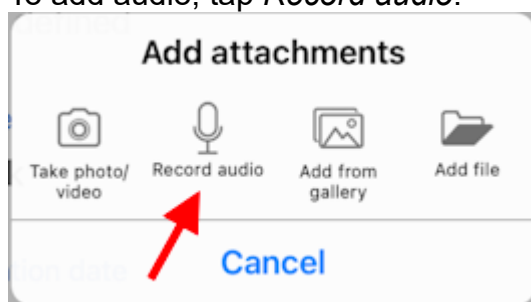
To share/send the added photo, tap *Share*.



Added videos can be viewed in the *Files* section of the feature's card. To view or delete the video, select it in the card and select the required option.

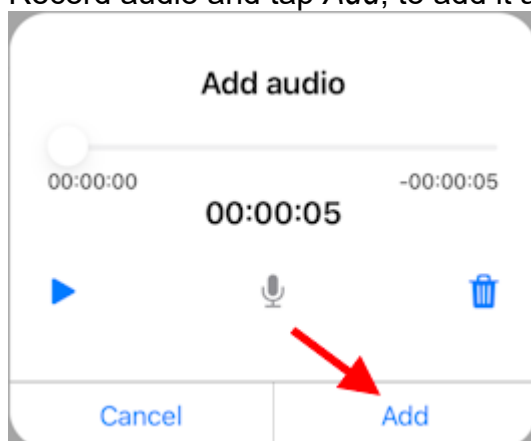


To add audio, tap *Record audio*.




To be able to use this option, in your smartphone settings you need to allow CarryMap app to have access to the device microphone (see [Application permissions](#)).

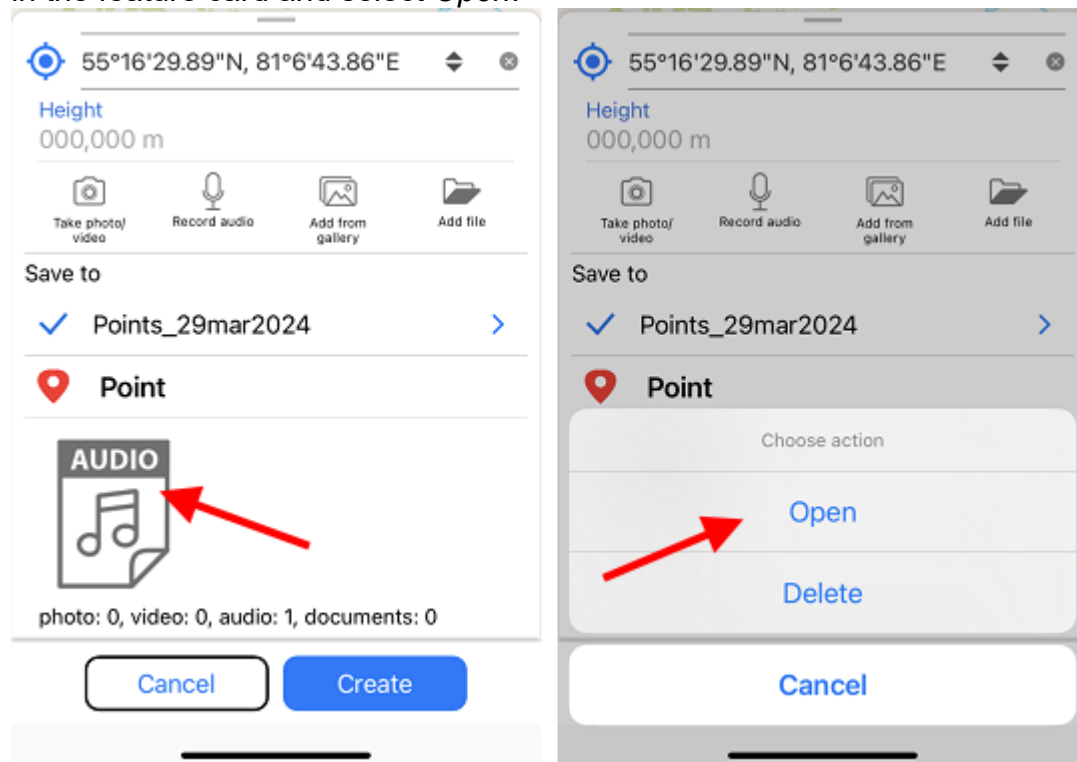
Record audio and tap *Add*, to add it as attachment to the feature.



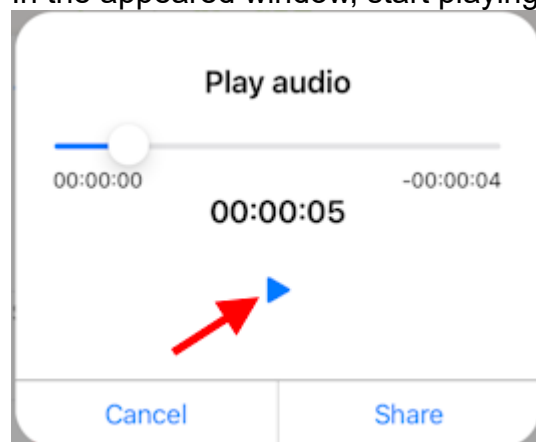
To play recorded audio, press the  button.

To delete recorded audio, click the  button.

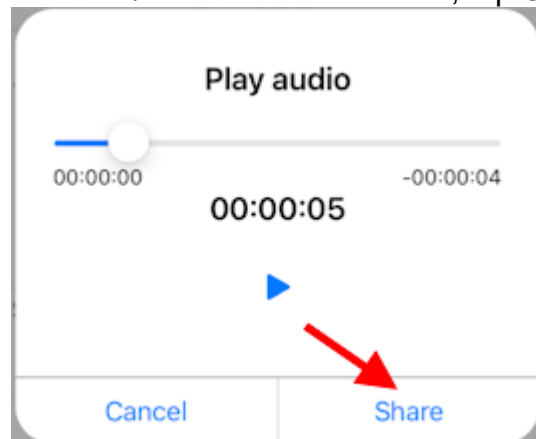
Added audio can be played in the application. To play the audio, tap the appropriate thumbnail in the feature card and select *Open*.



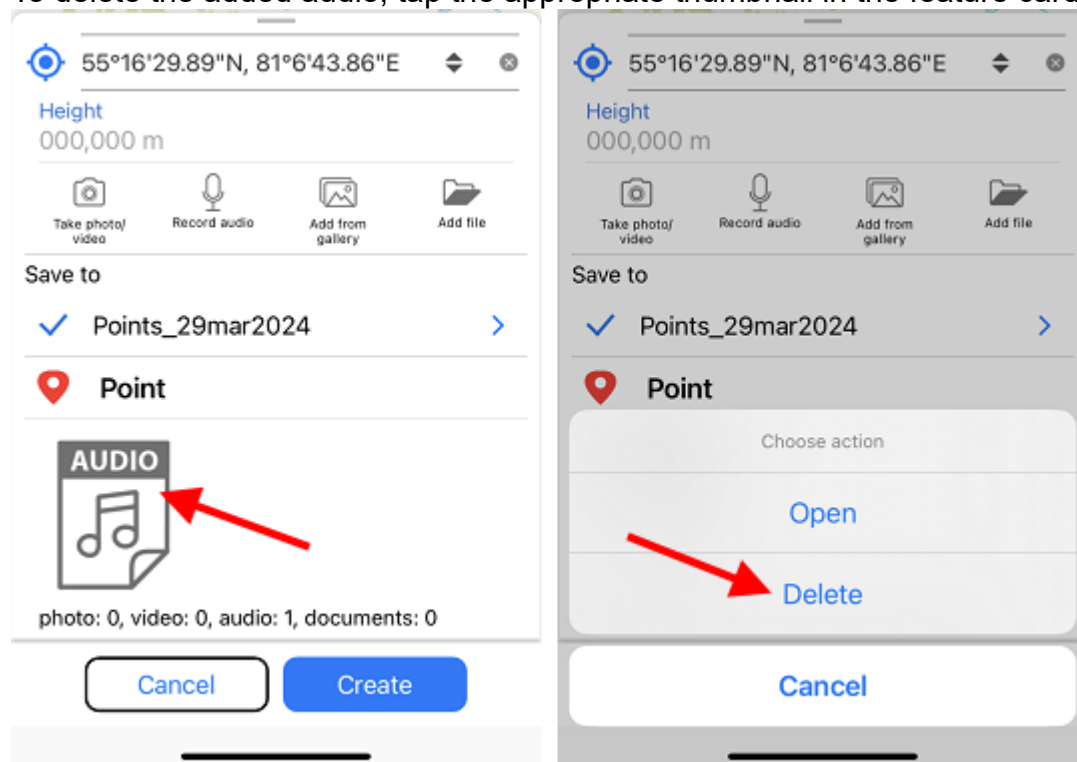
In the appeared window, start playing audio.



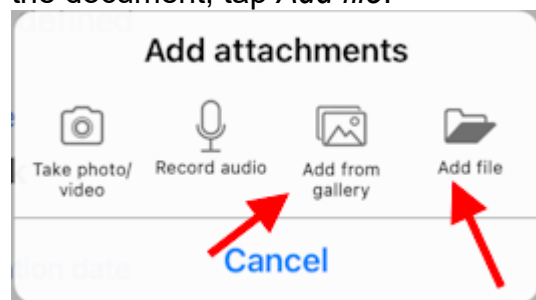
To share/send the added audio, tap *Share*.



To delete the added audio, tap the appropriate thumbnail in the feature card and select *Delete*.



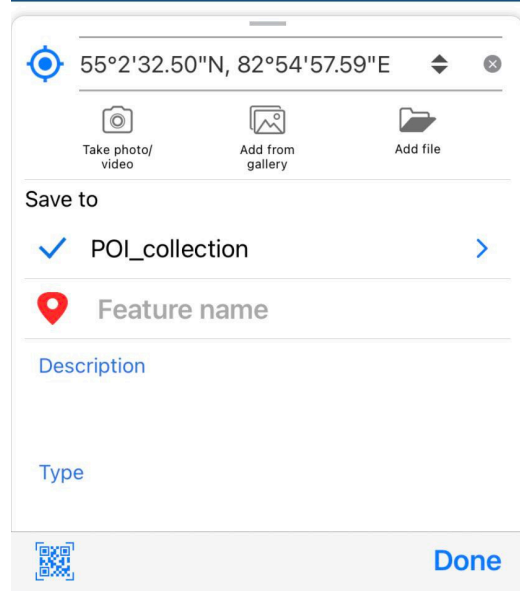
To add the media file from the gallery that is already on the device, tap *Add from gallery*, to add the document, tap *Add file*.



Filling in fields using QR code

To make it easier to add complex, voluminous information to the fields of the object card, you can use a QR code. This data entry feature is available for text and numeric fields when creating or editing an object.

Access to the QR code scanning capability appears automatically when you click on the needed field in the object creation or editing mode.



55°2'32.50"N, 82°54'57.59"E

Take photo/video Add from gallery Add file

Save to

✓ POI_collection

Feature name

Description

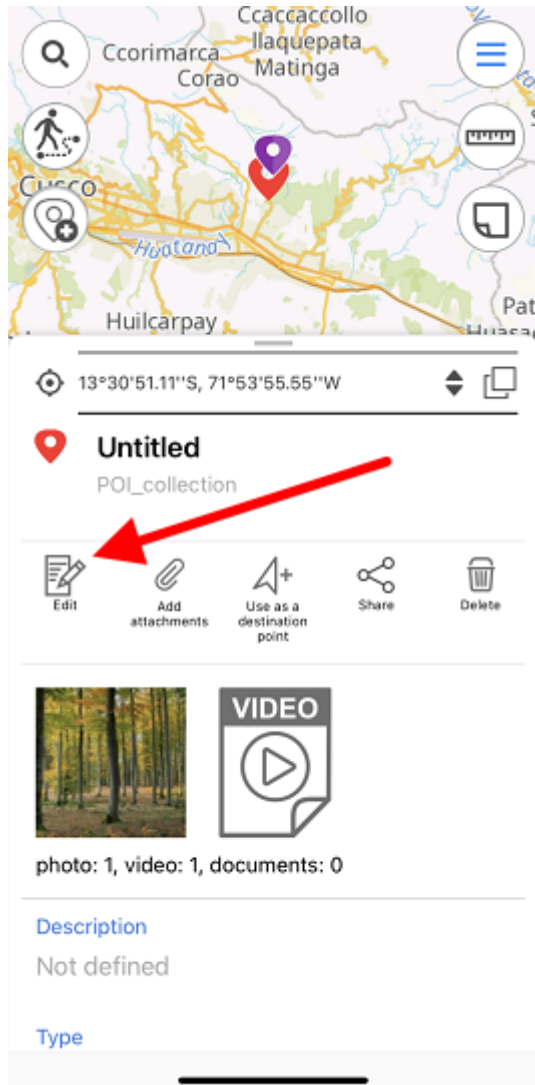
Type

Done

NOTE: In order to be able to use the option of filling in fields using QR-code, the eLiteMap application should be allowed to access the camera and the device memory (see [Application permissions](#)).

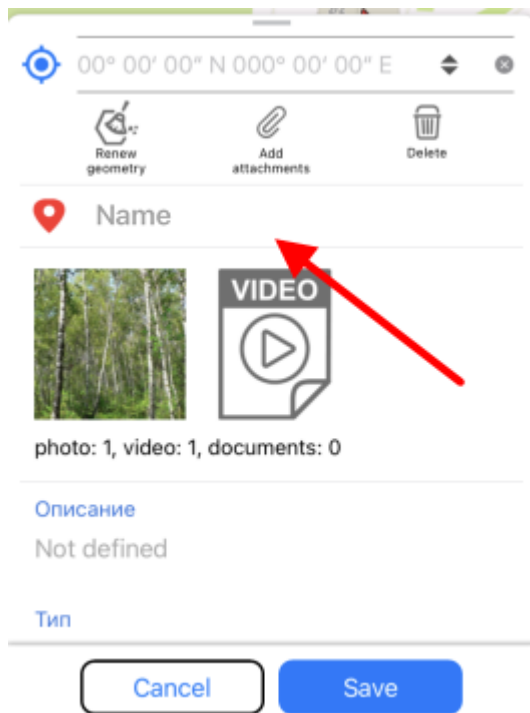
Editing features

To start editing feature, select it on map or find it searching by attribute or coordinates (see [Searching for features](#). [Going to feature by coordinates](#). section for details) and tap *Edit* icon in the feature identification card.

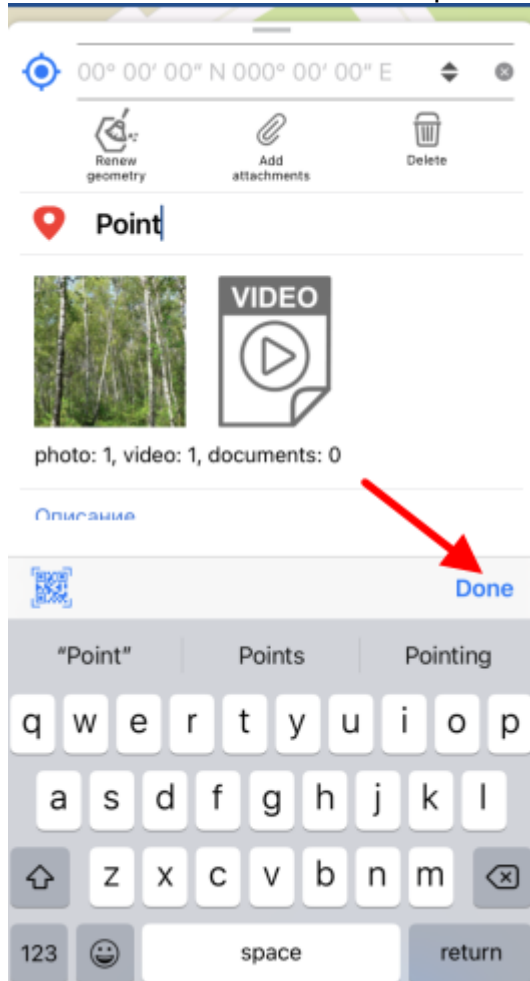


Being in the feature editing mode, you can change the feature geometry. To delete the point, tap it on the map. To add the new point, tap the empty place on the map or use the opportunity to create the vertex by coordinates (see [Creating features by coordinates](#)). To move the point, select it on the map and drag it to required place on the map.

To save your changes, tap **Save** . To cancel made changes, tap *Cancel* . To change the feature name, enable the editing mode and select *Feature name* in the feature card.



Enter the feature name and tap *Done*.



If feature name has not been specified, the feature card will have the default name *Untitled*, but the default name will be changed right after you specify the name of this feature.



Untitled

Points_06may2022



Cafe

Points_06may2022

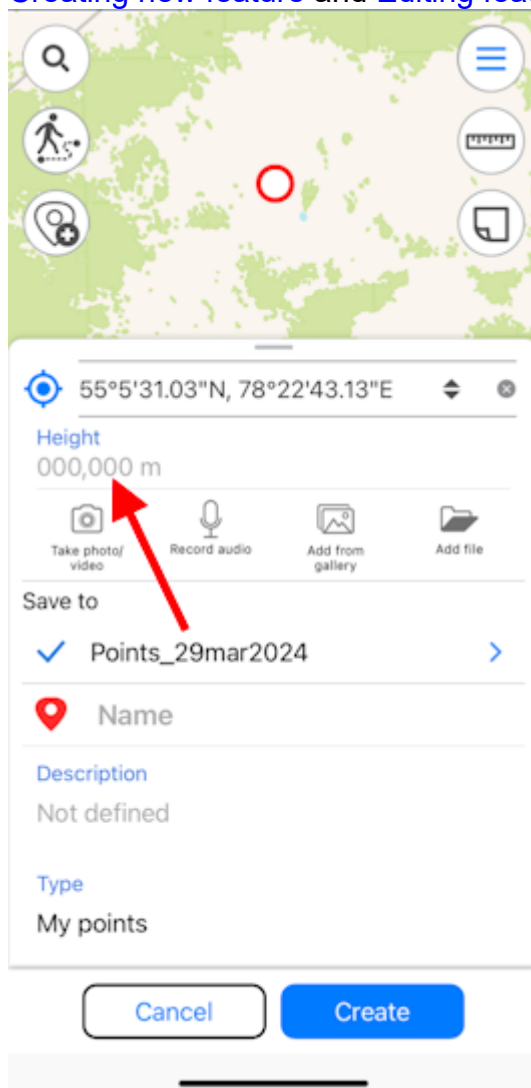
Adding and viewing Z coordinates (height) of point features

Adding Z coordinates to point features

Adding Z coordinates (heights) to point features is available when creating and editing features on the map.

Note that adding and editing the Z coordinate values of point features is only available in GeoPackage layers that support storing information about the height of features.

To add or edit Z coordinate (height) value of a point feature, during the process of creating or editing feature go to the value entry line in the *Height* field of the feature identification card (see [Creating new feature](#) and [Editing features](#) sections for details).



55°5'31.03"N, 78°22'43.13"E

Height
000,000 m

Take photo/video Record audio Add from gallery Add file

Save to
✓ Points_29mar2024

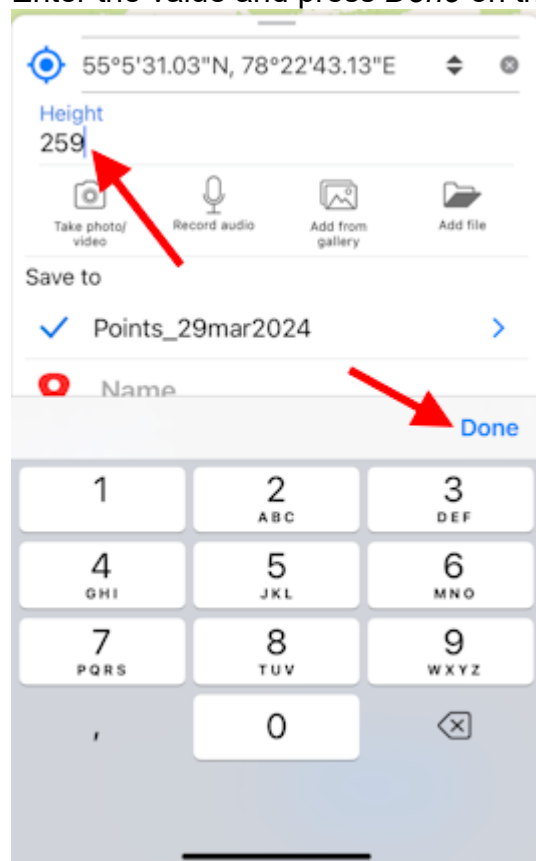
Name

Description
Not defined


Type
My points

Cancel Create

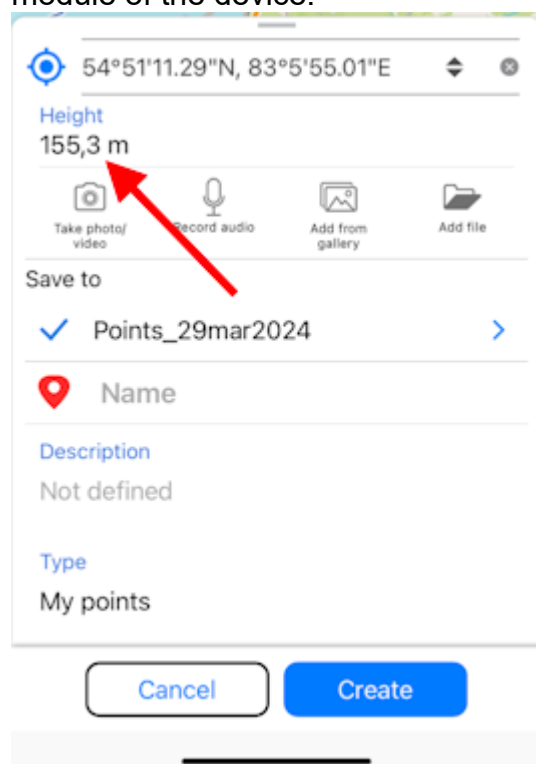
Enter the value and press *Done* on the keyboard.



The screenshot shows a mobile application interface for adding a point. At the top, there is a location field displaying coordinates: 55°5'31.03"N, 78°22'43.13"E. Below this is a 'Height' field with the value '259'. A red arrow points to the 'Done' button on the keyboard. The keyboard is visible at the bottom, showing numbers 1 through 9, 0, and a backspace key. Above the keyboard, there is a 'Save to' section with a checkmark and the text 'Points_29mar2024'. Below that is a 'Name' field with a red location pin icon. The 'Done' button is located on the right side of the keyboard.

To add Z coordinate (height) of a point feature from GPS module of the device, press *Coordinates by location*  button.

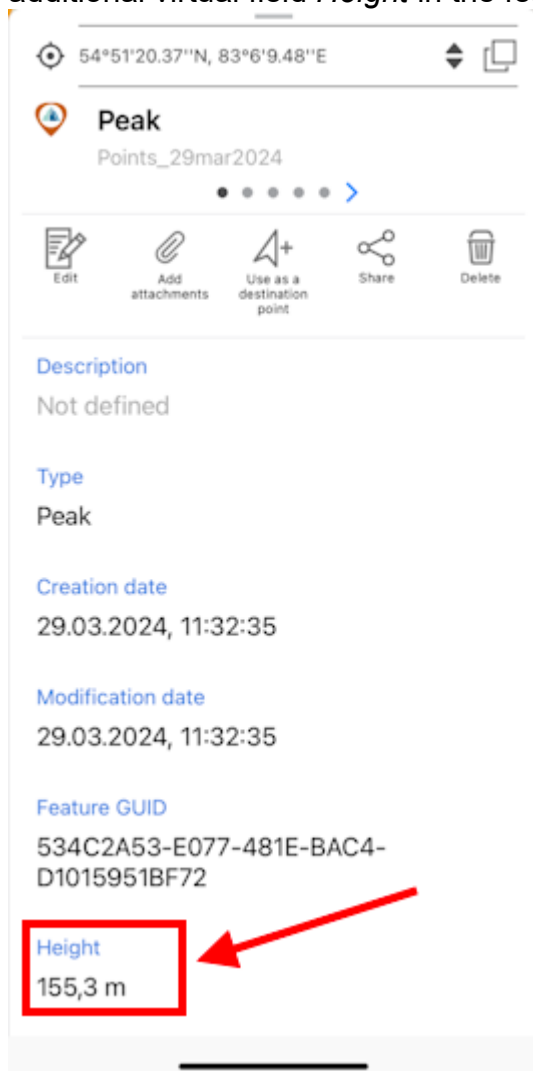
The value in the *Height* field will be changed to Z coordinate value obtained from the GPS module of the device.



The screenshot shows the same mobile application interface after pressing the 'Coordinates by location' button. The 'Height' field now displays '155,3 m'. A red arrow points to the 'Height' field. The 'Save to' section remains 'Points_29mar2024'. The 'Name' field is still empty. Below the 'Name' field, there is a 'Description' field with the text 'Not defined' and a 'Type' field with the text 'My points'. At the bottom, there are two buttons: 'Cancel' and 'Create'.

Viewing Z coordinates of point features

Information about Z coordinate (height) of GeoPackage point features is displayed in the additional virtual field *Height* in the feature identification card.

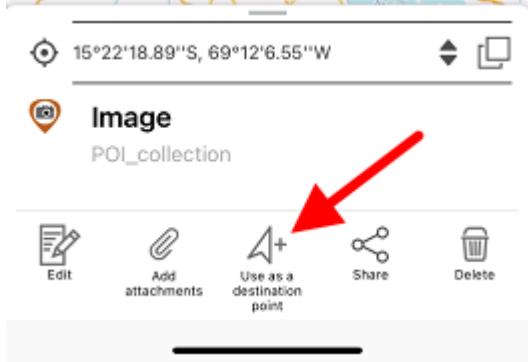


The units selected in the [Application settings](#) are used as the measurement units.

Use as a destination point

The *Use as a destination point* option allows selecting the feature or place on the map as a destination you want to reach.

To specify the place as your destination, tap the required place on the map, open three dots menu and select *Use as a destination point*.

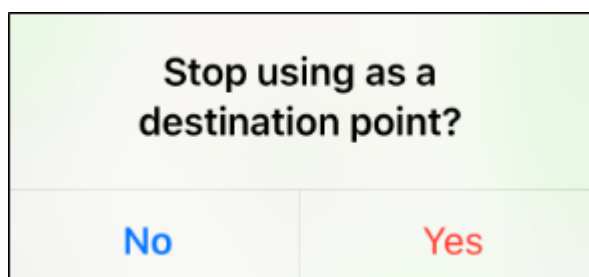


When the Use as a destination option is enabled, the arrow showing direction to specified target and distance to this target appear on the screen.



The target feature will be marked with the flag symbol .

To disable use of the *Use as a destination option*, tap the cross icon in the upper part of the screen and then tap Yes in the appeared dialog.



The *Use as a destination* option will be disabled.

When the *Use as a destination* option is enabled, the distance to specified target feature appears in the upper part of the screen.




When the *Use as a destination* option is enabled and recording track is started, the box in the upper part of the screen displays the distance to specified target feature and the covered distance, i.e. the length of the recorded track.



The units selected in the [Application settings](#) are used as the measurement units.

To change the displayed distance, press *Switch* button.



Your current location will be marked with the cross button  and direction to the target will be marked with the red arrow.

During use of the *Use as a destination* option you can create a point feature in your current location point. To do so, tap the cross button .



In the appeared window select the layer where to the point feature will be added.

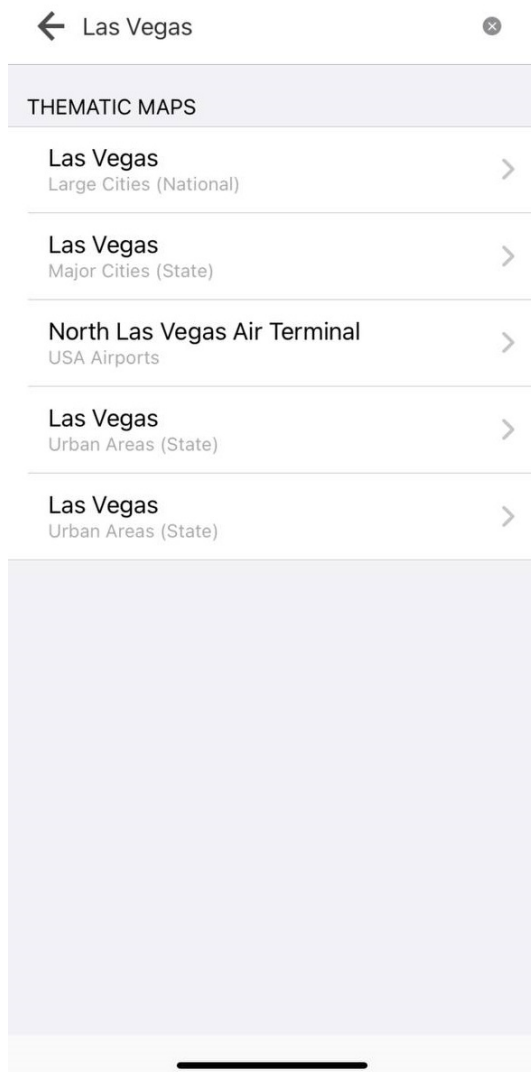
To confirm your selection, press .

Searching features. Going to feature by coordinates

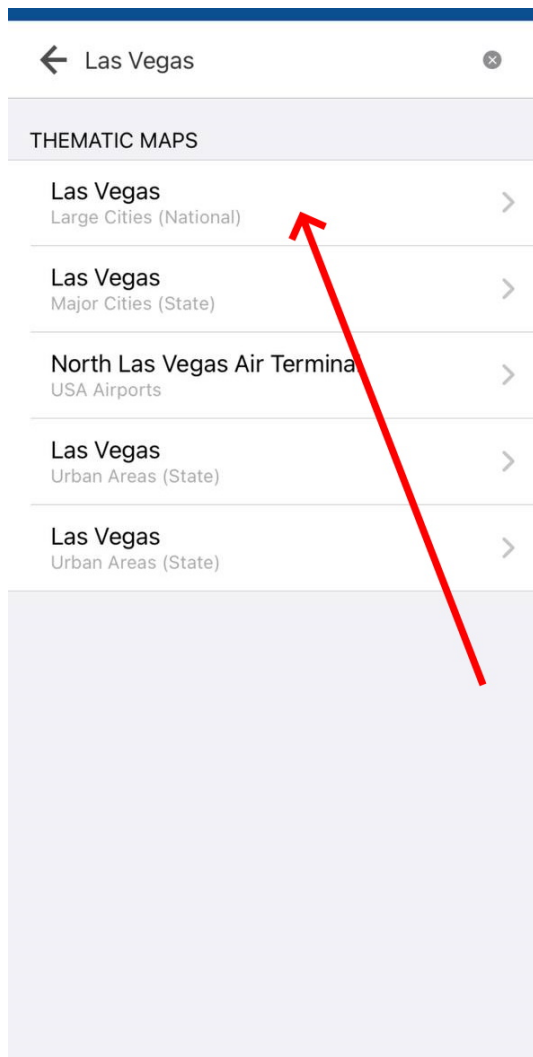
To search for GPKG feature or CMF2 by attributes, open the search field pressing the search button .



Enter the search text to the appeared field (for example, the point name, description, etc.) and press *Return* on the keyboard. The search results will be shown in the list.



To go to the found feature on the map, press its name in the search results list.



The feature will be marked on the map.

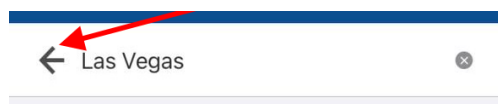


To perform an "exact search", before entering the search numeric or text value, put "!" and then enter the required number or text to search for.

To clear search request, press *Clear search*.




To view all found features, press the arrow and all found features will be marked on the map.



and all found



If no features were found during search, you would see the *Features not found* message.

To go to feature by coordinates, open the search field pressing the search button . The text search field will appear. To switch to the go to coordinates mode, press *Switch* button.




To open the go to DMS coordinates window, press *Switch* button one time.



To open the go to DD coordinates window, press *Switch* button two times.

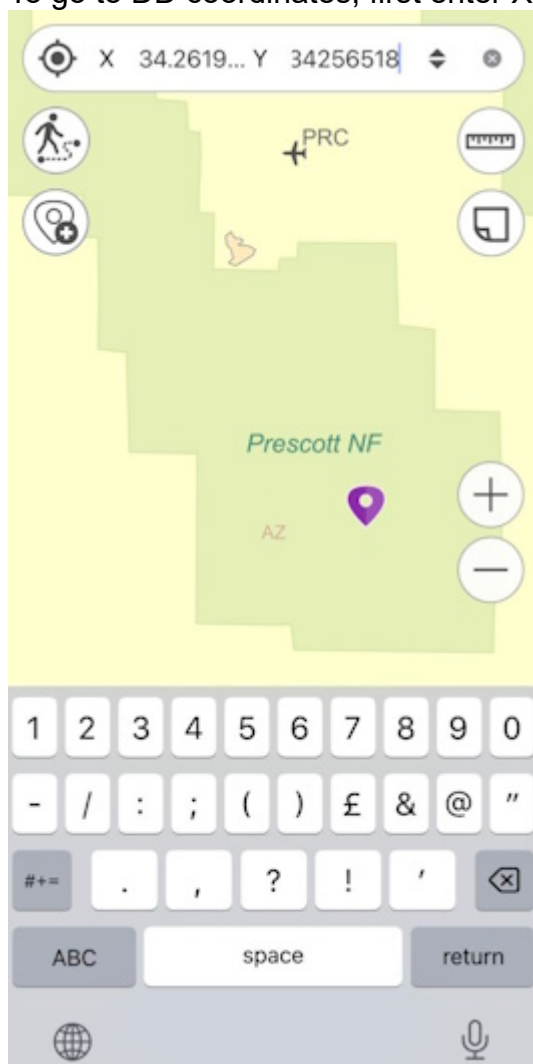



When entering DMS coordinates, to put ° (degree), ' (minute), or " (second) sign, press space after the number and the sign will automatically appear in the go to coordinates line. After entering the longitude and latitude values you need to enter their name: north, south and west, east.

Then press *Return* on the keyboard. The found point will be marked with  icon on your map. The coordinates that you searched for will be shown in the card.



To go to DD coordinates, first enter X, then Y coordinate, and press *Return*.



The found point will be marked with  icon on your map. The coordinates that you searched for will be shown in the card.

Measuring on the map

To measure on the map, tap the *Measurements* button. The button will change its color and the tool window will appear.



If you want to measure distance, tap *Measure distance* icon.



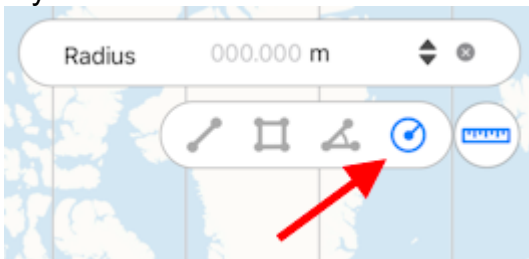
If you want to measure area, tap *Measure area* icon, accordingly.



If you want to measure geographic azimuth, tap *Measure azimuth* icon.

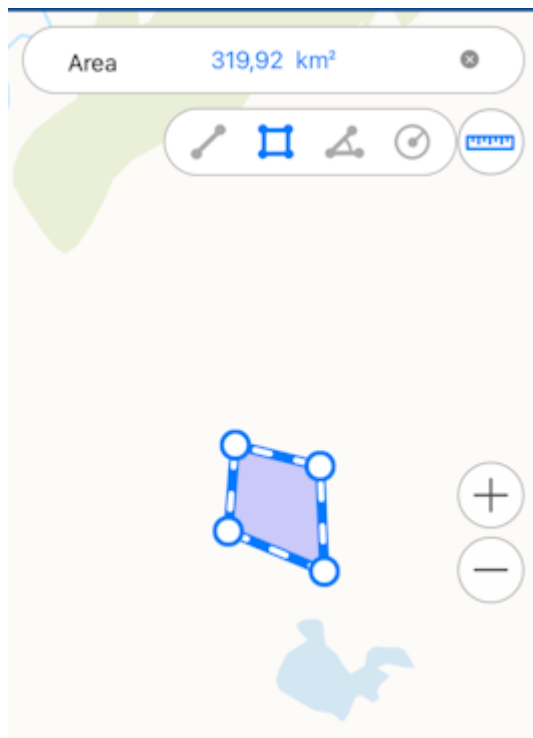


If you want to measure radius of a circle, tap *Measure radius* icon.



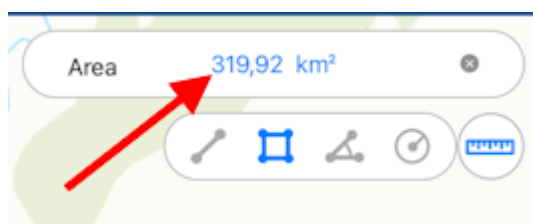
Measuring distance and area

To start measurement, sequentially tap the map adding points.



To delete the needless point, tap it again.

The calculated distance or area will be shown in the upper part of the measurement window.

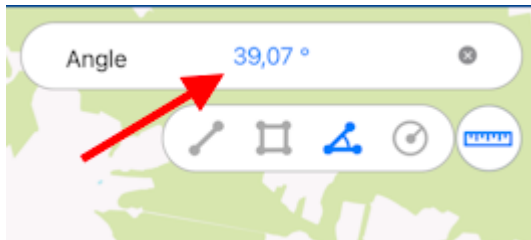


Measuring the geographic azimuth

To start measurement, sequentially add two points on the map.

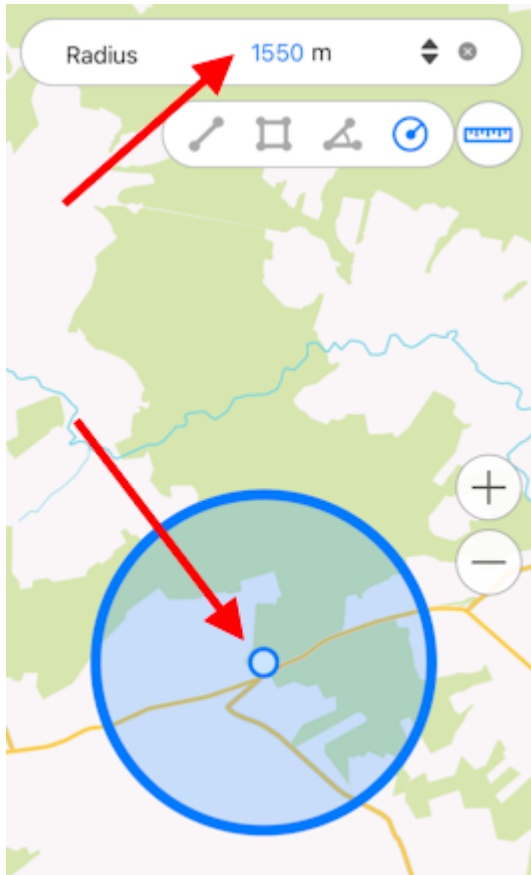


The calculated value will be shown in the measurement window.

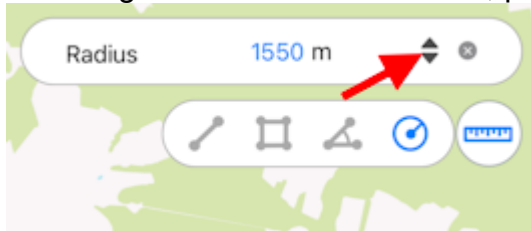



Measuring the radius of a circle

To start measurement, add a point on the map and enter the radius value in the measurement window.



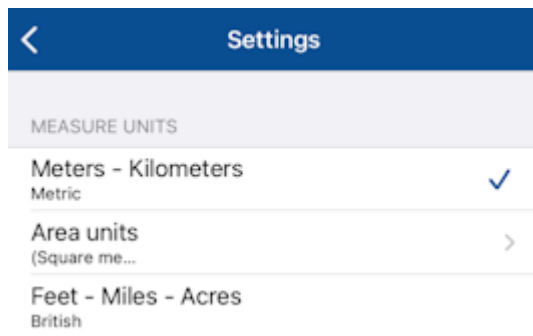
To change radius calculation units, press the *Switch* button.



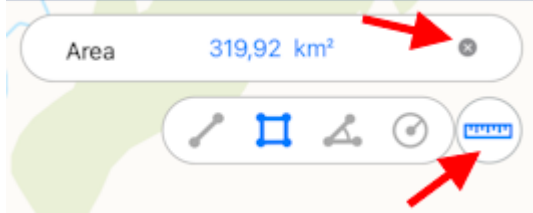
Measuring on the map is also possible using *My location* option. To start measurement from the point of your current location, select the tool and then tap  button. Now the point of your current location will be used as the starting or one of the intermediate points of measurement.

To change measurement units for distance, areas or circle radius, go to [Application settings](#) of the map menu (note that changing units is possible if you are not in the measurement mode). In the *Measure units* section select the required units:

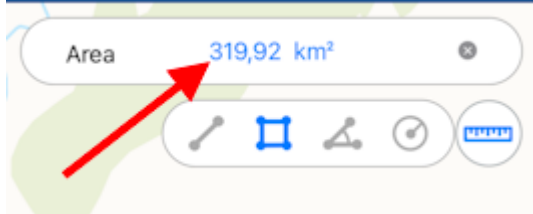
- Metric system (meters, kilometers):
 - Area units:
 - Square meters/kilometers,
 - Hectares;
- British system (feet, miles, acres).



To close the measurement window, tap the cross icon in the upper right corner of the window or tap *Measurements* button again.



To copy the measurement result, long tap the output value and tap *Copy* in the appeared dialog.

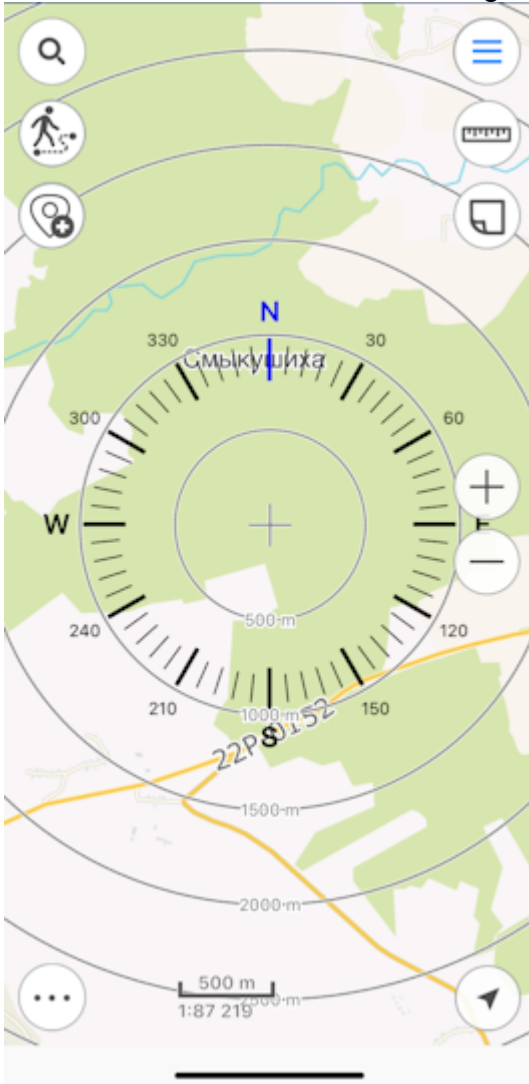


Determining distance and direction using a circular ruler

The circular ruler is used to determine distances and directions on the map in real time.

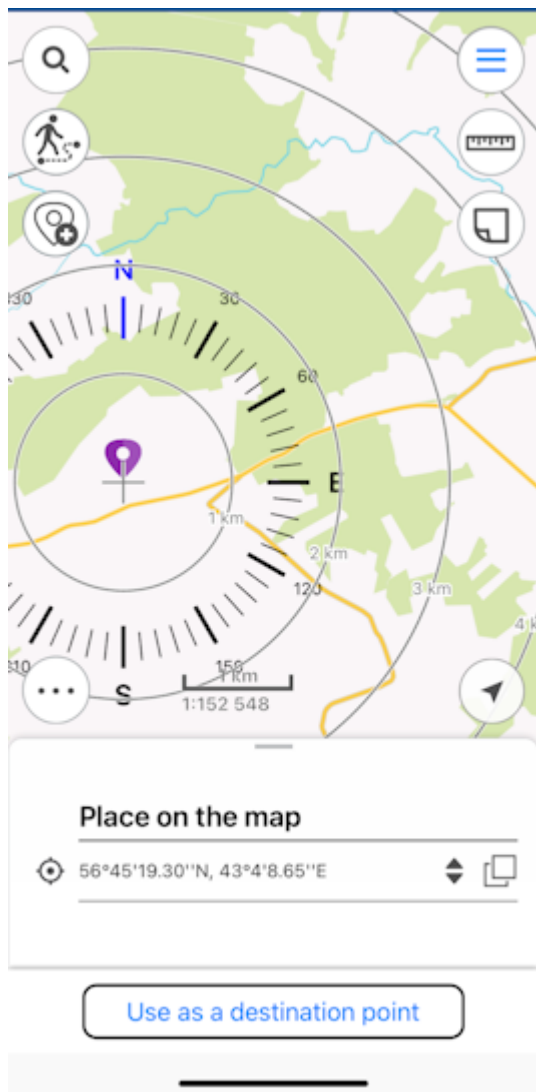
The circular ruler consists of:

- Limbus used to determine direction of the sides of the horizon on the map;
- Set of circular zones showing the distance from the center of the screen. *

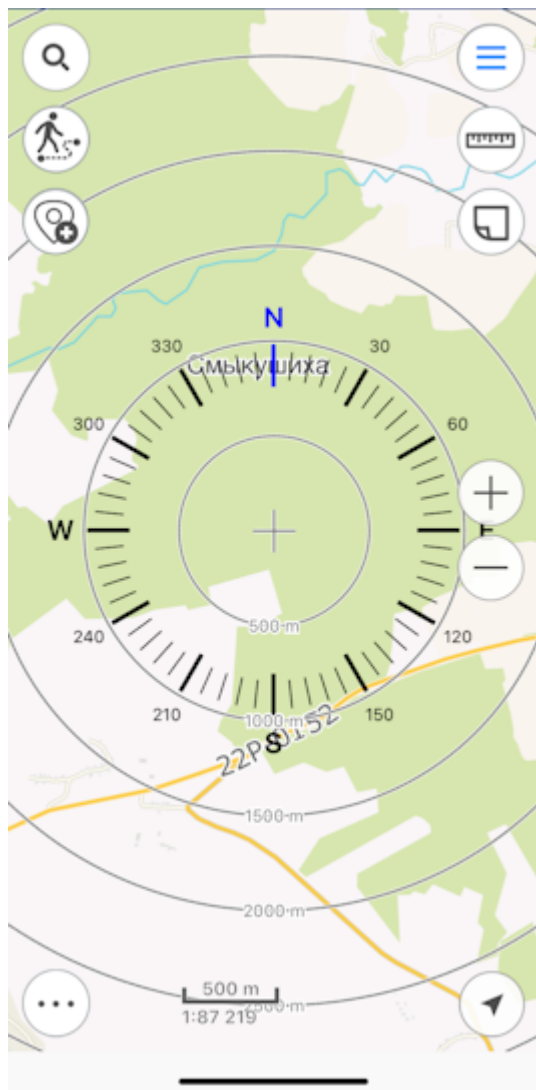


* **NOTE:** Zones sizes are calculated automatically depending on the map scale. The distances are displayed in the units specified in the [Application settings](#) .

The elements of the circular ruler are linked to the identification pushpin. When objects are identified, the map automatically positions to the identification pushpin, and the center of the circular ruler does not change its position when map is panned, or map scale is changed.

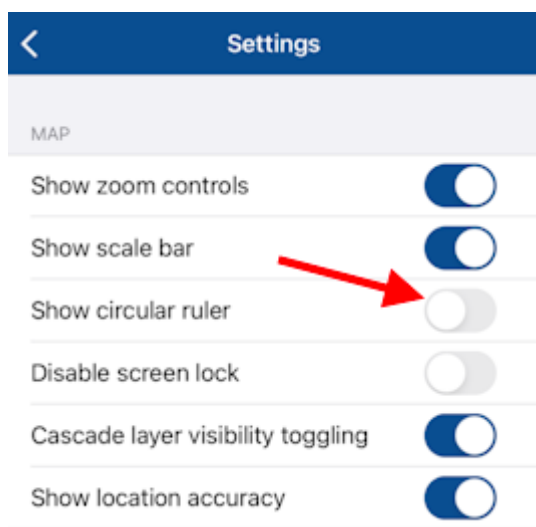


To display the circular ruler in the center of the screen again, close the identification card.




The display of the circular ruler in the map is disabled by default.

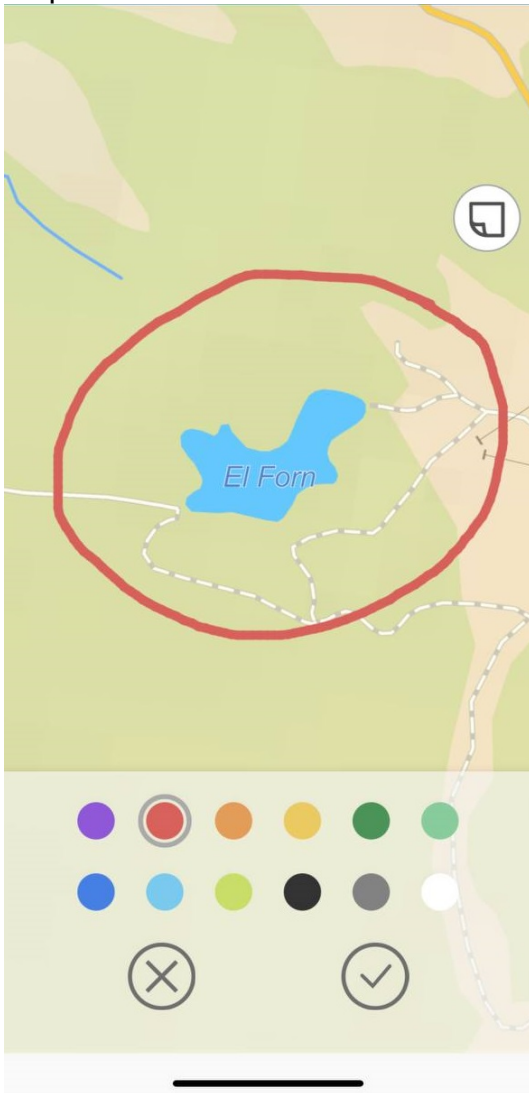
To enable display of the circular ruler on the map, go to [Application settings](#) and pull the switch in the *Show circular ruler* section.



Creating marks


To create the graphic mark on your map as a text, custom shape or arrow, press *Create mark* button  and select the note type.

To create the mark as the custom shape, press  button. Draw the required shape on the map.



To change the note color, select the required color from the provided list.



To save the mark, press Save .

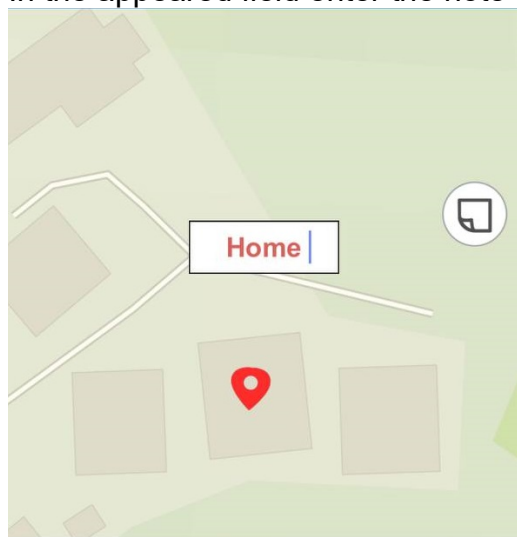
To cancel creating the mark, press Cancel



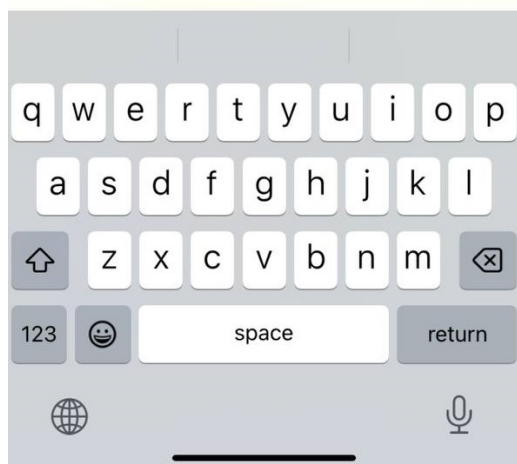
To create the text mark on the map, press



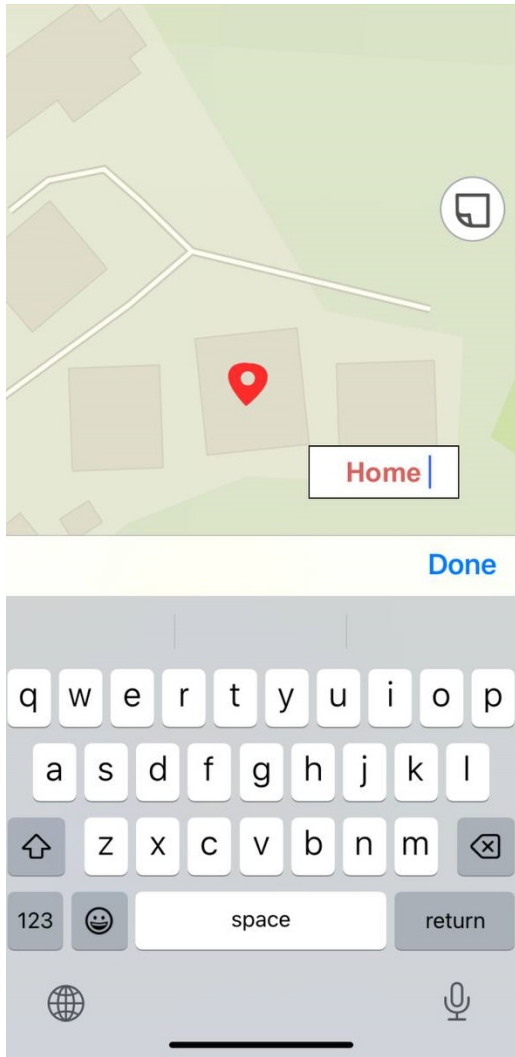
In the appeared field enter the note text and press *Done* on the keyboard.



Done



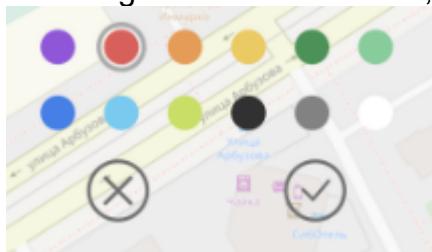
To change location of the text mark, long tap the note and drag it to the new place on the map.

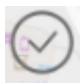


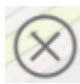
To change the text mark direction, hold the text box on the map and rotate it as needed.




To change the text mark color, select the required color from the provided list.

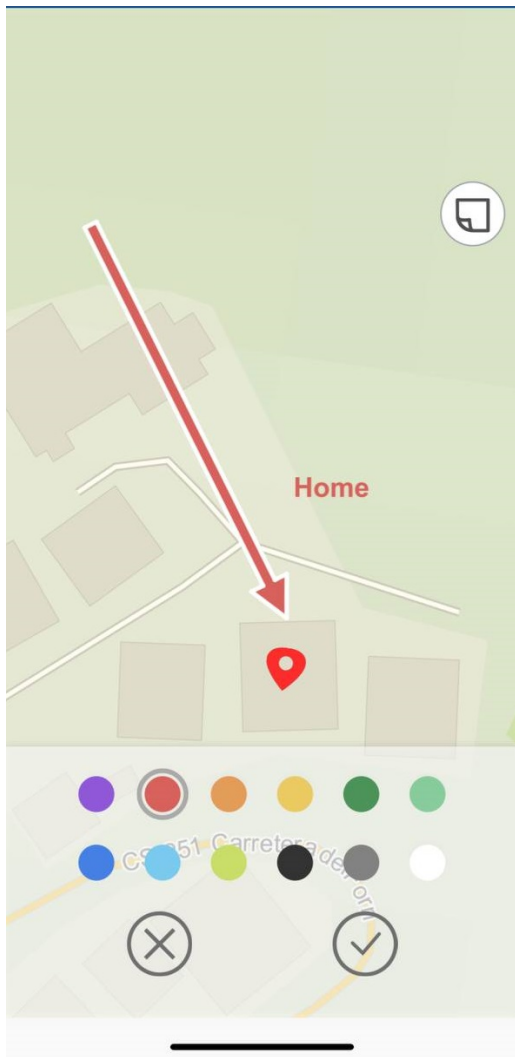


To save the text mark, press  .

To cancel creating the text mark, press *Cancel*  .

To create the mark as the arrow, press  .

Now draw the arrow on the map, specifying the start and end point of the arrow.



To change location of the arrow, specify the start and the end point of the arrow again, and the previously created arrow will be deleted.

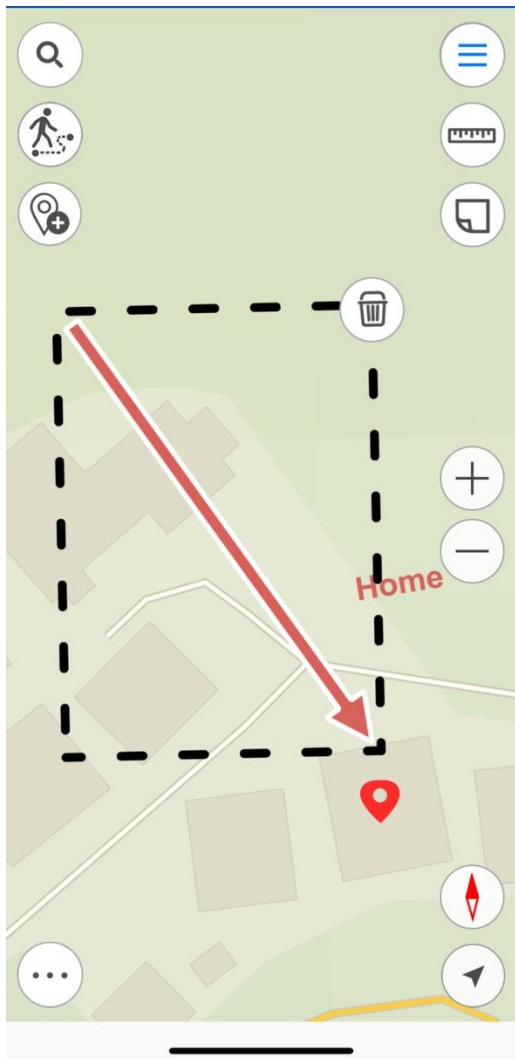
To change color of the arrow mark, select the required color from the provided list.





To save the arrow mark, press Save .

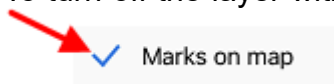
To cancel creating the arrow mark, press *Cancel* .

To delete the arrow mark, long tap it on the map.

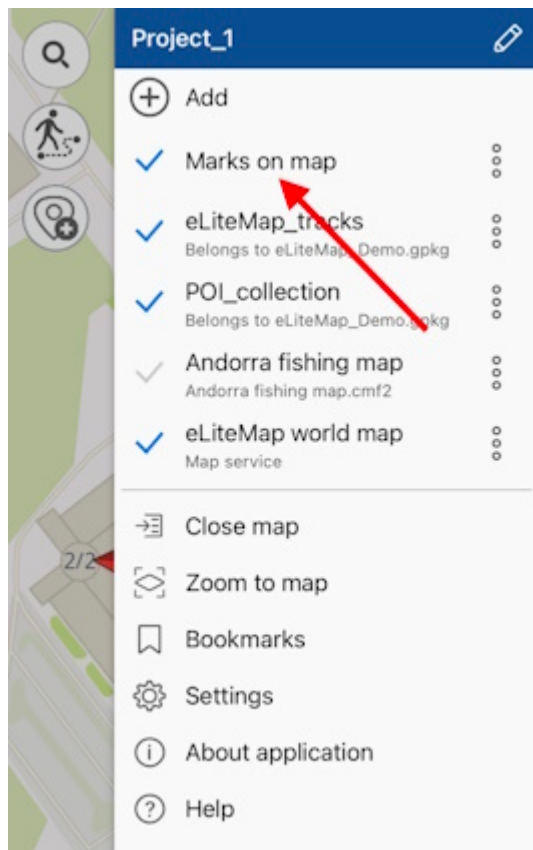


Then press  and your arrow will be deleted.

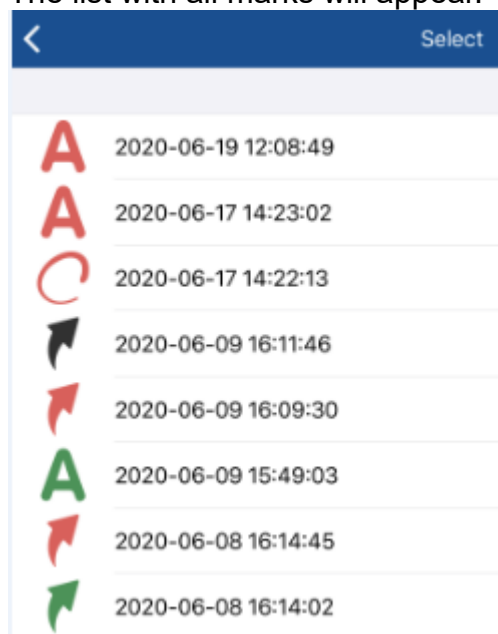
To turn off the layer with marks, go to the main menu pressing , and press the check sign



To view all created marks, select *Marks on map* layer.



The list with all marks will appear.



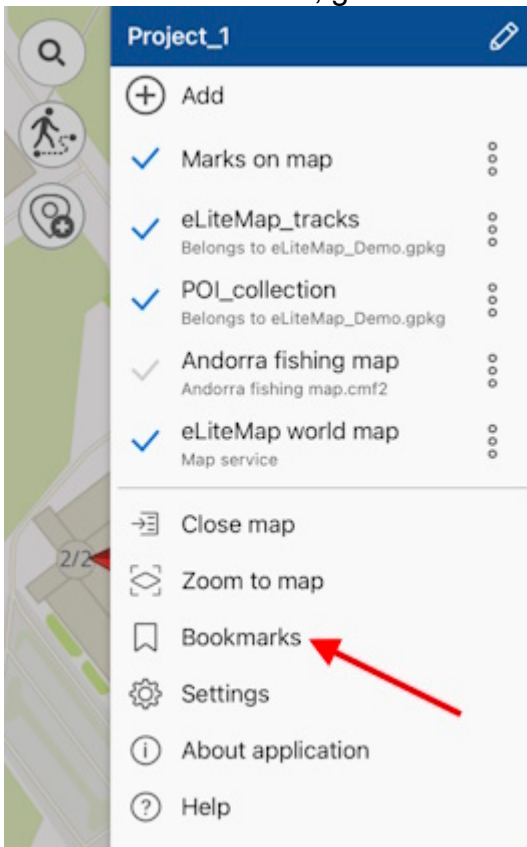
To go to any mark on the map, select it from the list and it will be opened on the map.

Creating bookmarks

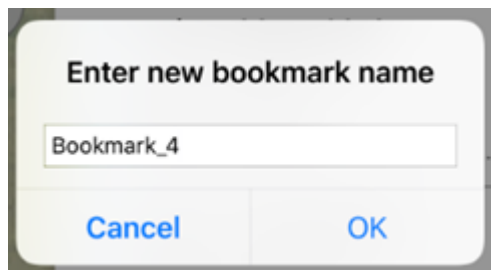
Bookmarks are provided for storing the needed map extents and data. To create the bookmark, set the required map area boundary, go to *Additional tools for work with map* and tap *Create bookmark*.



Enter the bookmark name or leave the default name. To save the bookmark, tap *OK*. To view the created bookmark, go to *Bookmarks* section in the project menu.



To delete the bookmark, tap three dots and select *Delete*. To rename already created bookmark, tap *Rename*, enter the new name and tap *OK*.

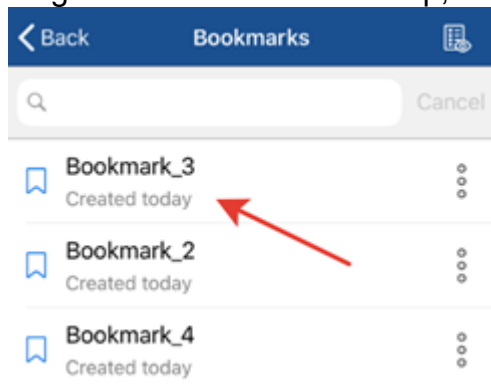


Enter new bookmark name

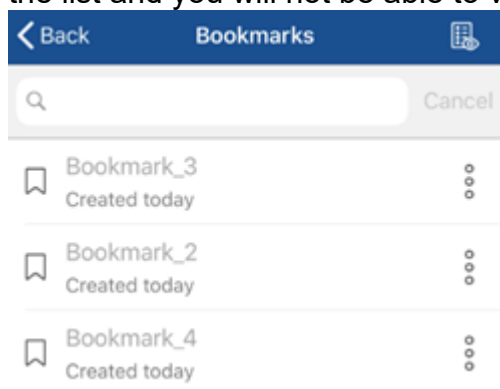
Bookmark_4


Cancel OK

To go to the bookmark on map, select it from the list and it will be shown on the screen.



If previously created bookmark does not fall into the current map extent, it will be grayed out in the list and you will not be able to view it.



To view all active bookmarks of the current map, tap .

Saving map extent

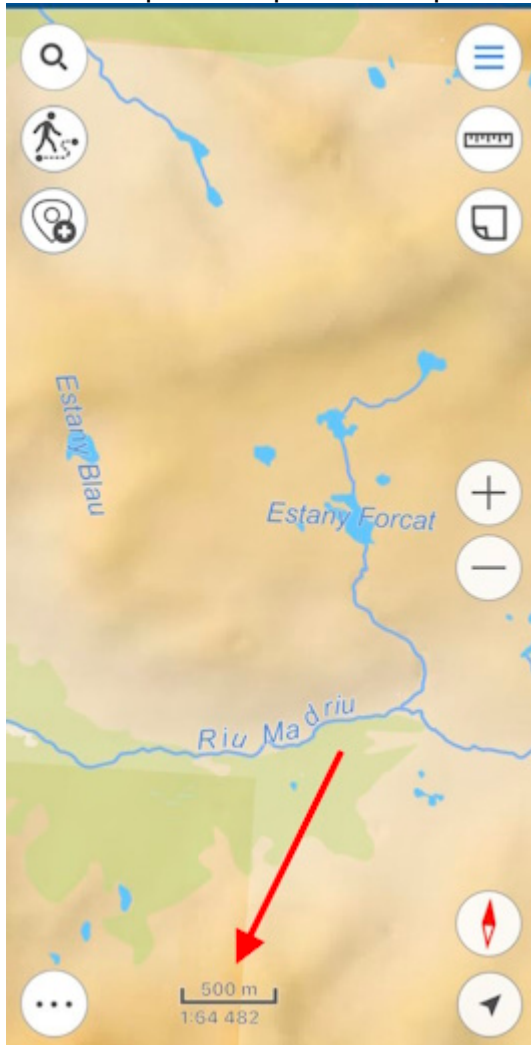
To save the map extent for printing or to save it to PDF document, set the required map area boundary, go to *Additional tools for work with map* and tap *Save to PDF*.



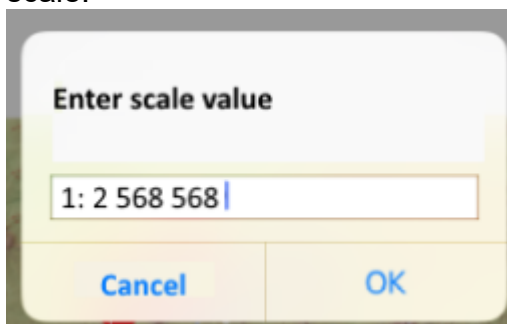
In the dialog that opens, select the required action to save or print the created map extent.

Selecting map scale


To set map scale open the map window and click on the scale bar.





In the window that opens, enter the scale and click OK, the map will be drawn at the specified scale.



Finding current location

To define your current location on the map, tap My location .



When the *My location* option is enabled, the button changes . To disable the option, tap any place on the map. If you tap the location button again, the map will go to the tracking mode and the button will look as . Being in the tracking mode, the map will rotate according to your current location. To disable tracking mode, tap any place on the map.

Displaying information from GPS/GLONASS receiver in the map window

The GPS/GLONASS receiver information detection function is provided to display on the map your current location data and the movement parameters in real time.

The information from the GPS/GLONASS receiver of your device is shown in a separate block of the map window in active 'Find current location' mode, 'Track record' mode or when moving to a destination point option is enabled (see [Finding current location](#), [Recording track](#), [Creating polygon by track](#) and [Use as a destination point](#) sections for more detail).



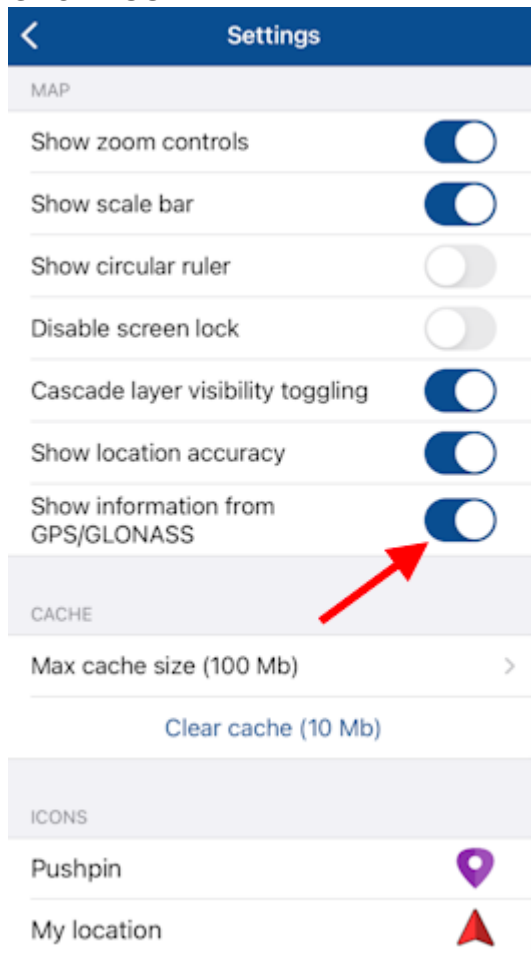
To disable display of information from your device's GPS/GLONASS receiver, tap the cross icon in the upper right corner of the block.



Note, that the display of the block with the information from the devices' GPS/GLONASS receiver will be disabled until the next activation of finding current location, start of track recording or moving to the destination point options.

To completely disable display of information from your device's GPS/GLONASS receiver, go to [Application settings](#) and change the switch position in the *Show information from GPS/*

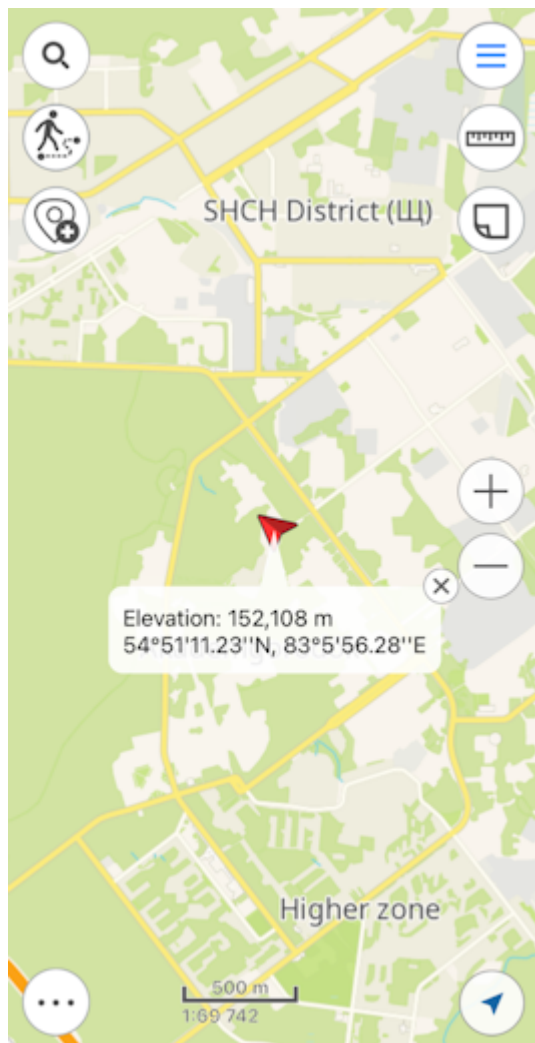
GLONASS section.



Displaying information from GPS/GLONASS receiver when finding location mode is enabled

While finding location mode or moving to destination point option is enabled, the following information from the device's GPS/GLONASS receiver is displayed in the separate block on the map:

- *Elevation* – the altitude above sea level at the current location point on the map;
- *Coordinates* – the geographic coordinates of the current location point on the map in degrees-minutes-seconds format.



Displaying information from GPS/GLONASS receiver when track recording mode is enabled

While track recording or creating polygon by track mode is enabled, the following information from the device's GPS/GLONASS receiver is displayed in the separate block on the map:

- *Speed* – the information about your movement speed calculated based on your device's GPS/GLONASS receiver data;
- *Length/Area, Perimeter* – the information about geometry of the recorded track/created polygon by track calculated in real time;
- *Elevation* – the altitude above sea level at the current location point on the map.

